



Subdivision Surfaces

COS 426, Spring 2017
Princeton University

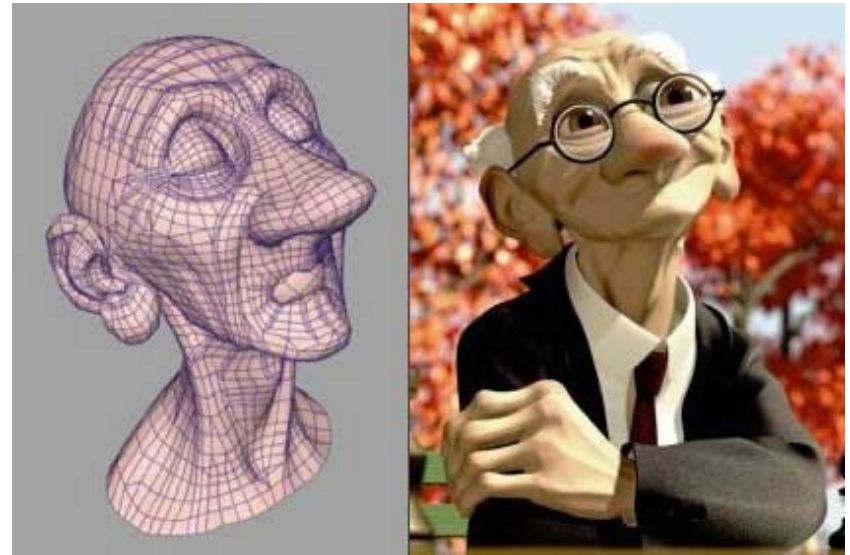
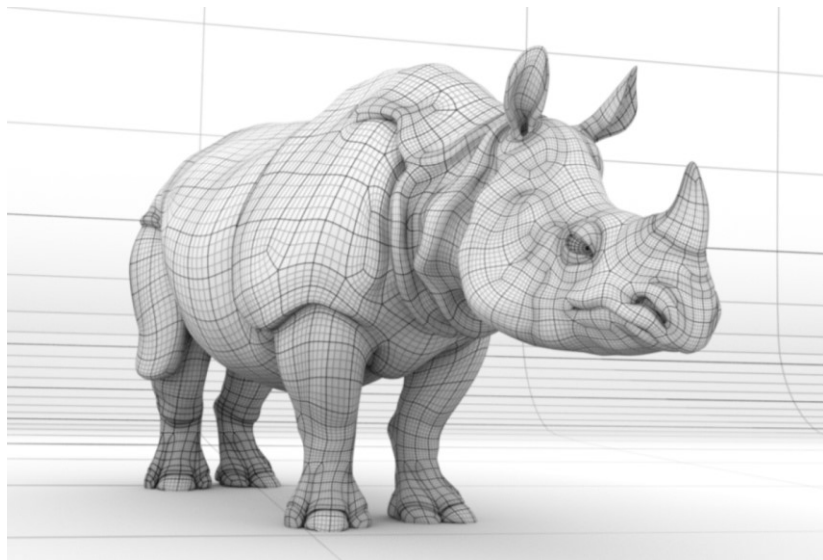
3D Object Representations



- Raw data
 - Range image
 - Point cloud
- Surfaces
 - Polygonal mesh
 - **Subdivision**
 - Parametric
 - Implicit
- Solids
 - Voxels
 - BSP tree
 - CSG
 - Sweep
- High-level structures
 - Scene graph
 - Application specific

Subdivision Surfaces

- Used in movie and game industries
- Supported by most 3D modeling software



Geri's Game © Pixar Animation Studios

Subdivision Surfaces



Geru's Game



- “served as a demonstration of a new animation tool called subdivision surfaces” (Wikipedia)
- Subdivision used for head, hands & some clothing
- Academy Award winner

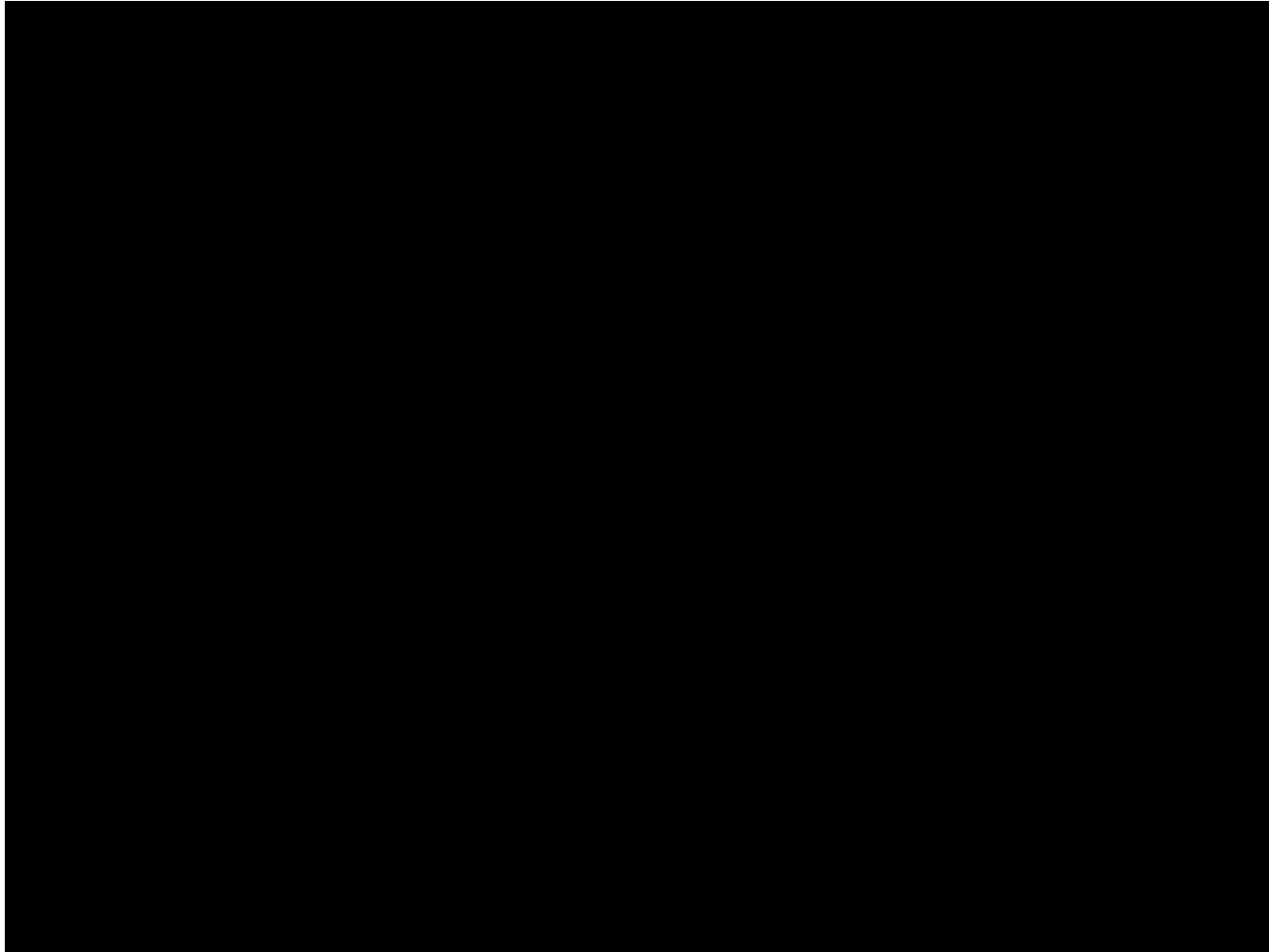


Academy Award™ Winner
Best Animated Short Film
1997

Geri's Game



- Guest performance in Toy Story 2



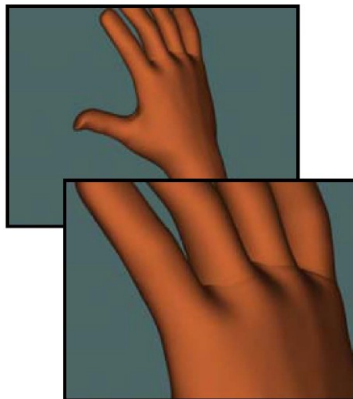
Subdivision Surfaces

- An alternative to NURBS, overcoming:
 - Many patches
 - Difficult to mark sharp features

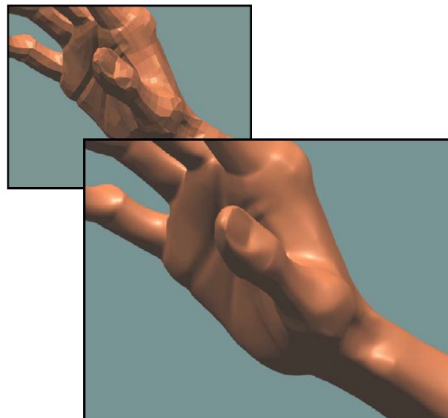


- Irregularities after deformation

Woody's hand (NURBS)

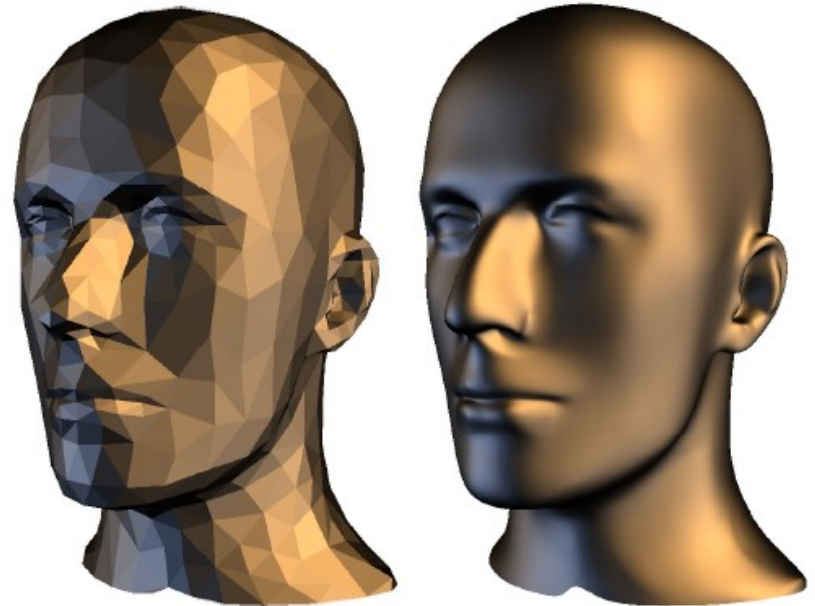


Geri's hand (subdivision)



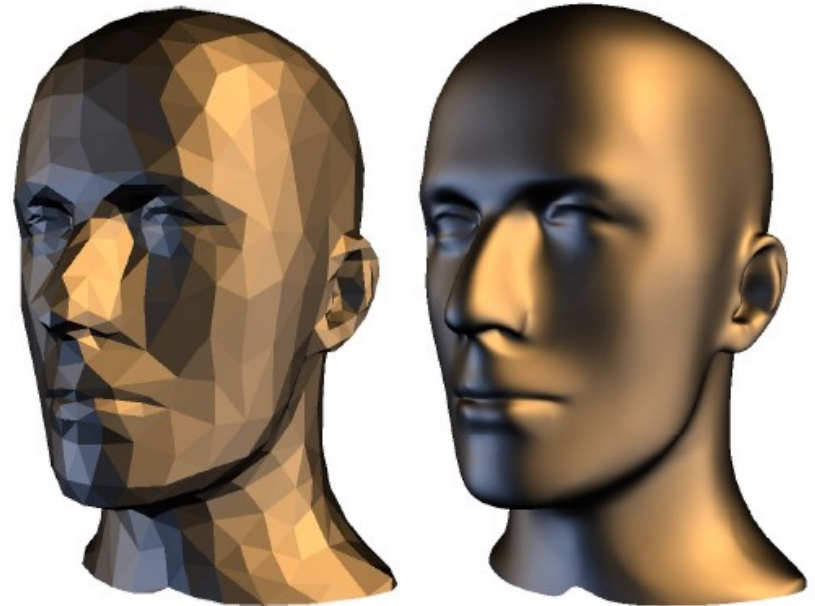
Subdivision Surfaces

- What makes a good surface representation?
 - Accurate
 - Concise
 - Intuitive specification
 - Local support
 - Affine invariant
 - Arbitrary topology
 - Guaranteed continuity
 - Natural parameterization
 - Efficient display
 - Efficient intersections



Subdivision Surfaces

- What makes a good surface representation?
 - Accurate
 - Concise
 - Intuitive specification
 - Local support
 - Affine invariant
 - Arbitrary topology
 - **Guaranteed continuity**
 - Natural parameterization
 - Efficient display
 - Efficient intersections

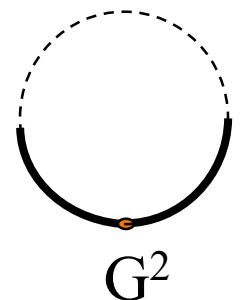
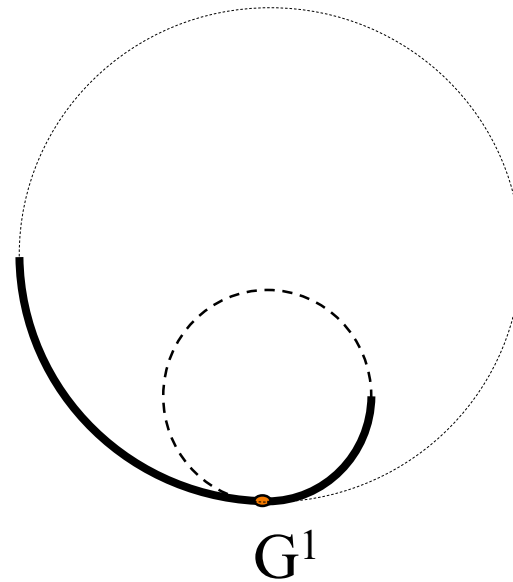
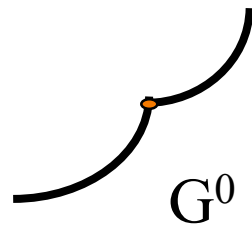


Continuity



A curve / surface with G^k continuity has a continuous k -th derivative, geometrically.


No continuity
(G^{-1} ?)



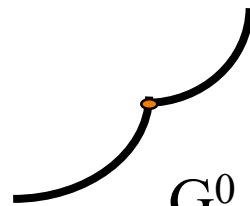
Continuity

Similar, but not exactly C^k continuity

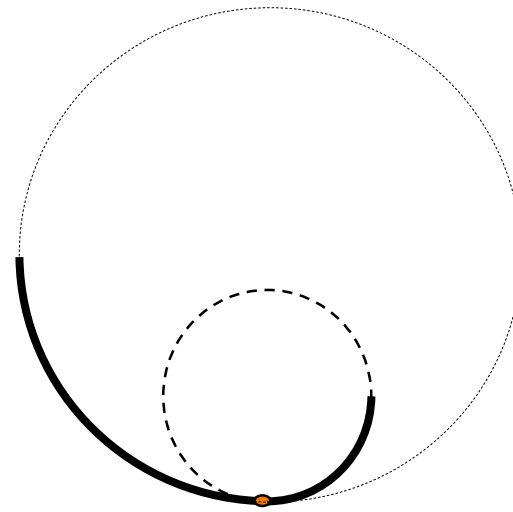
- Geometric, not of algebraic (e.g.: $f_x(u) = r_x \cos(2\pi u)$)
- Different only when algebraic gradient $\vec{\nabla} f = 0$



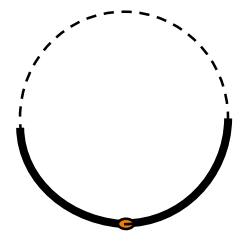
No continuity
(G^{-1} ?)



G^0



G^1

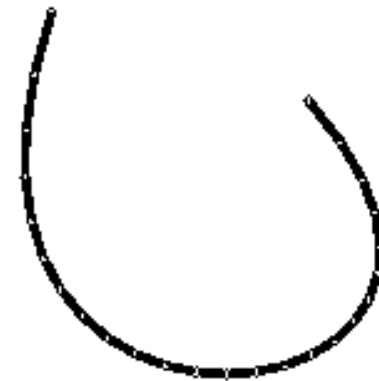
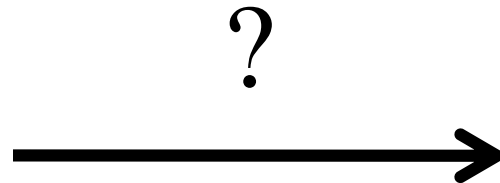


G^2

Subdivision



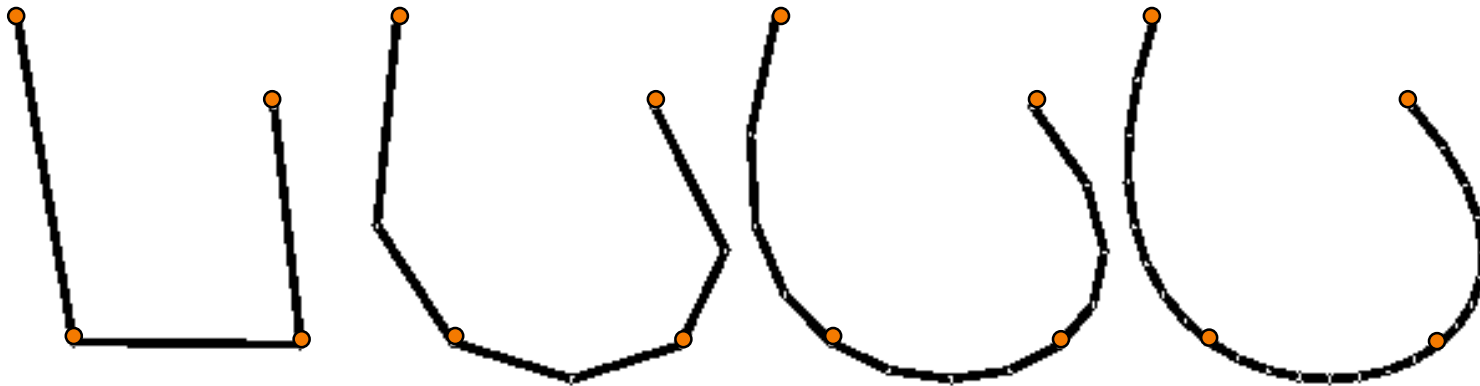
- How do you make a curve with guaranteed continuity?



Subdivision

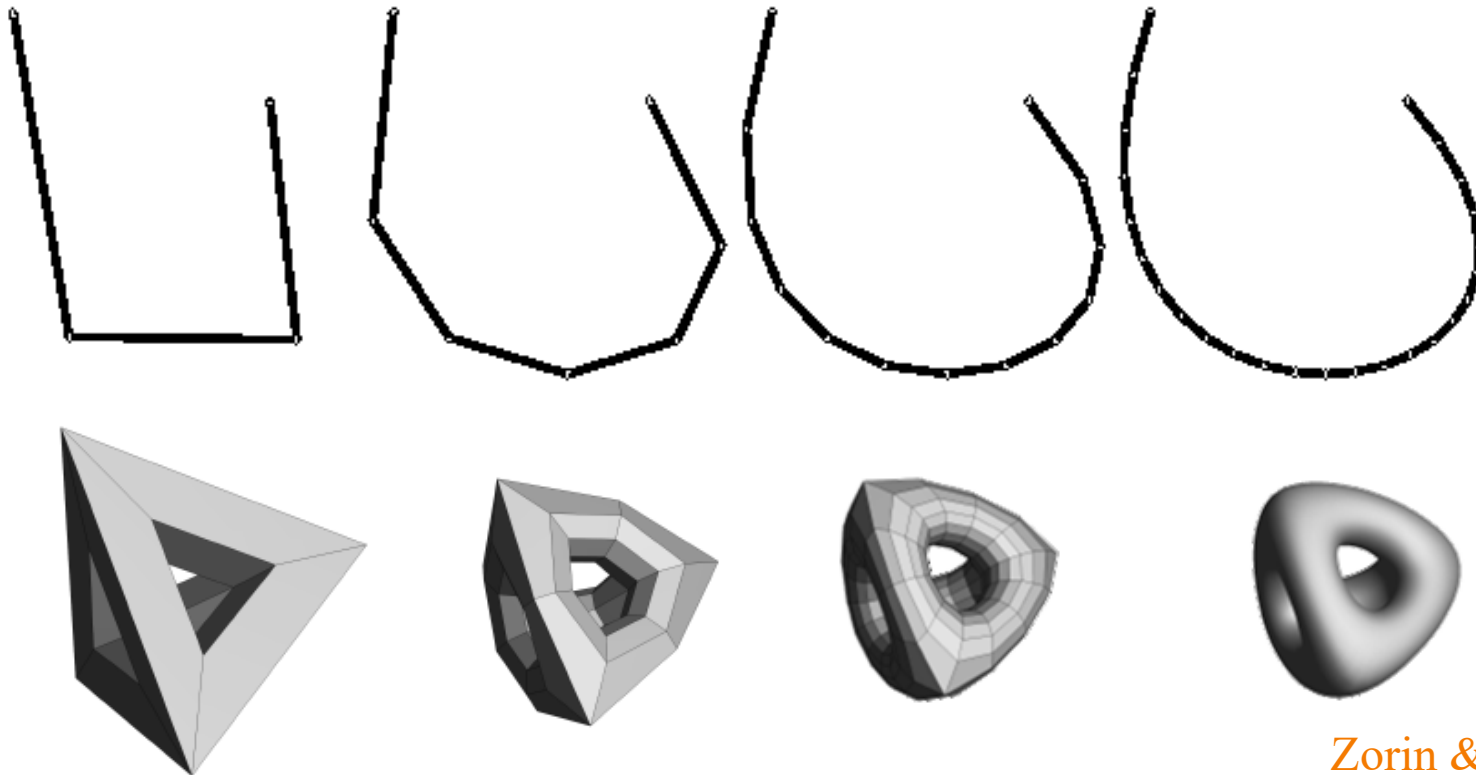


- How do you make a curve with guaranteed continuity? ...



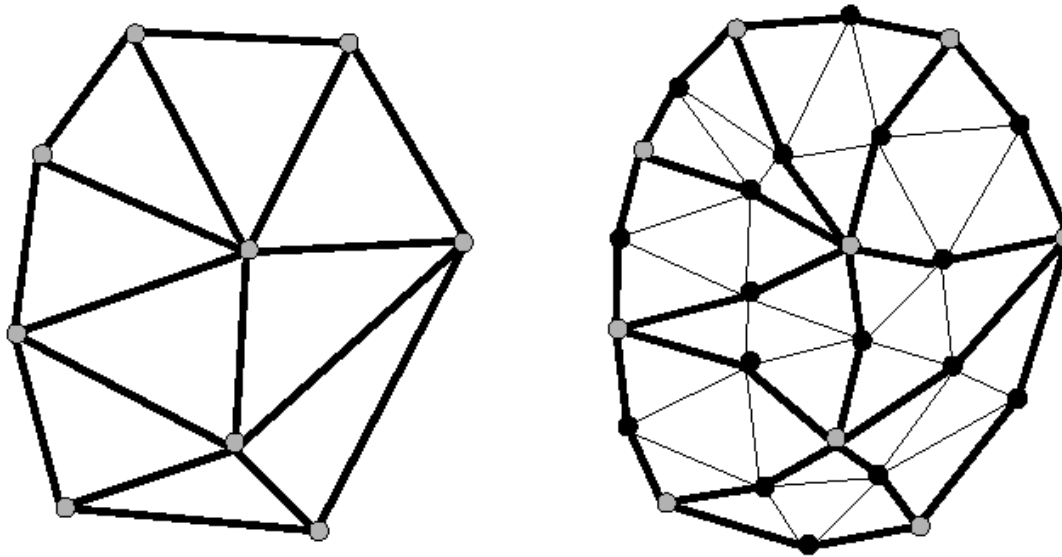
Subdivision

- How do you make a surface with guaranteed continuity?



Subdivision Surfaces

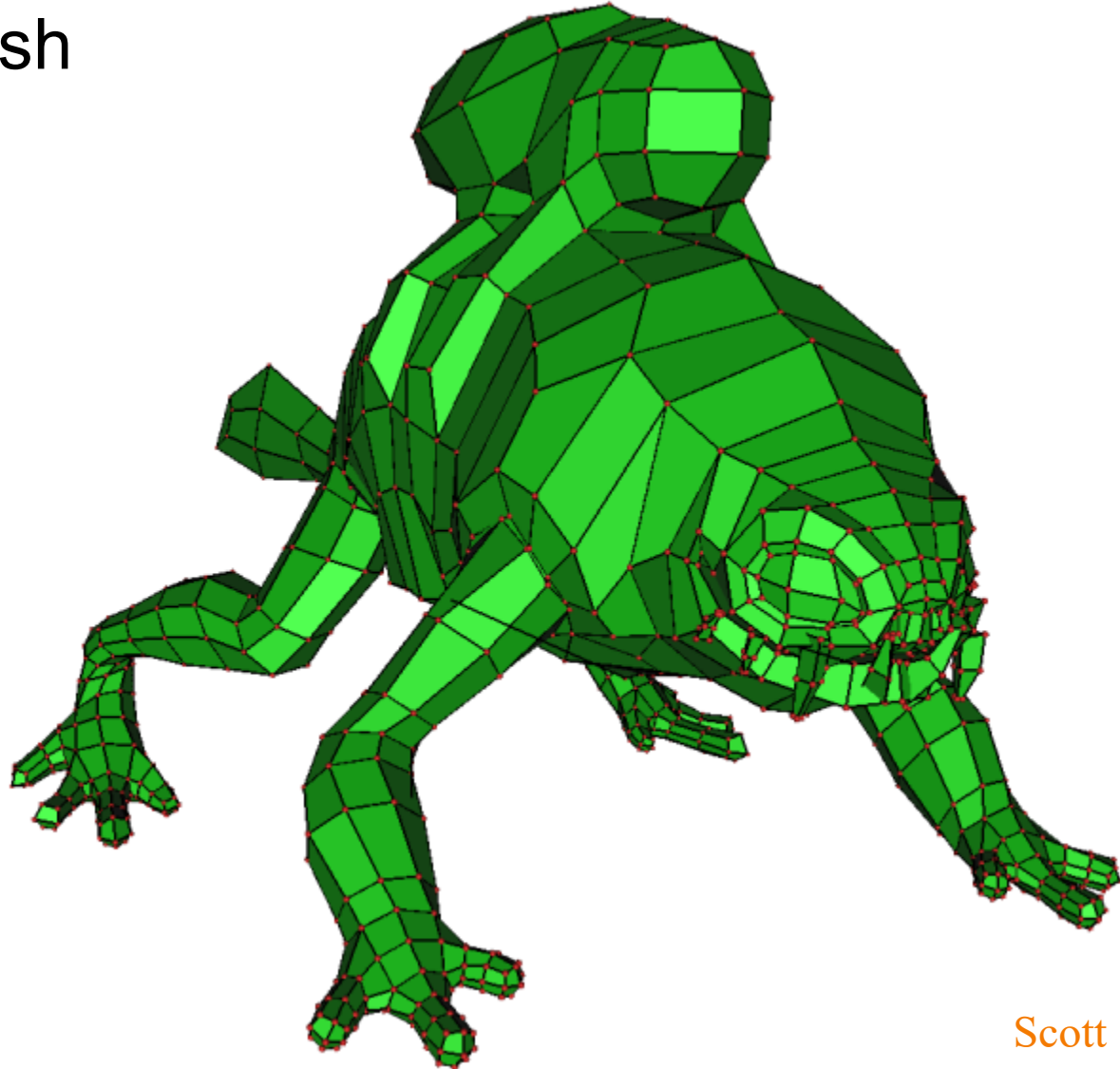
- Repeated application of
 - Topology refinement (splitting faces)
 - Geometry refinement (weighted averaging)



Subdivision Surfaces – Examples



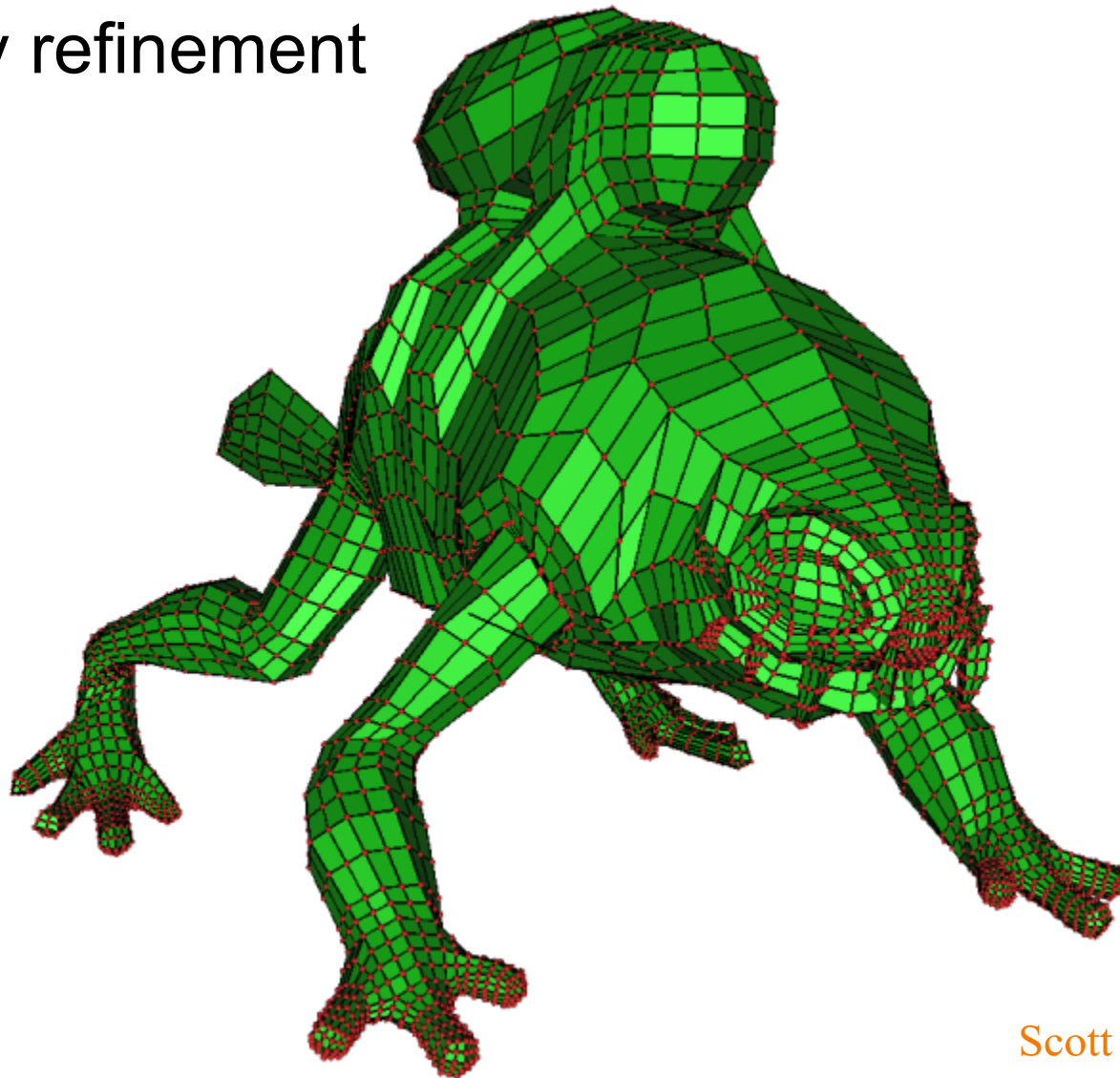
- Base mesh



Subdivision Surfaces – Examples



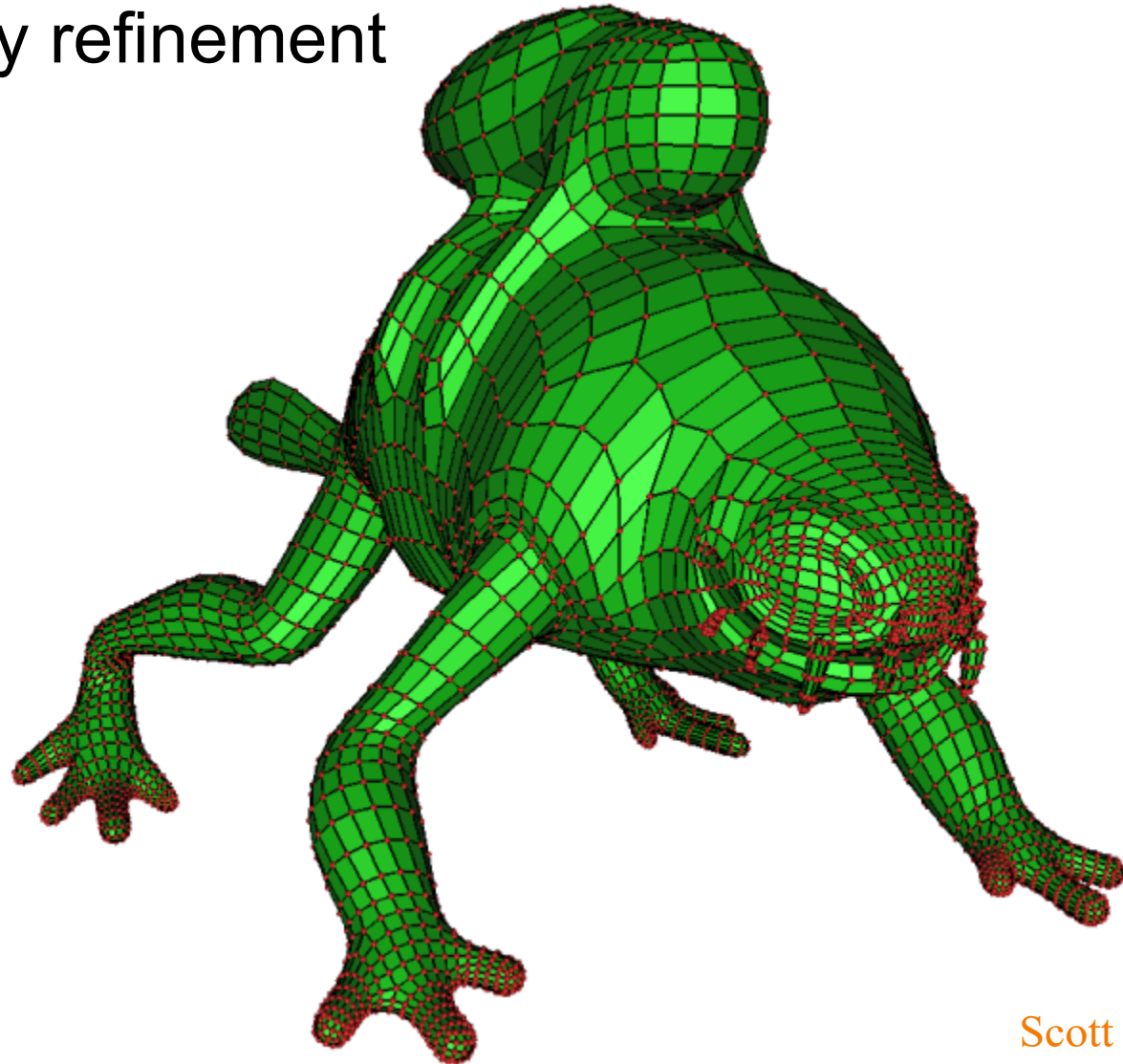
- Topology refinement



Subdivision Surfaces – Examples



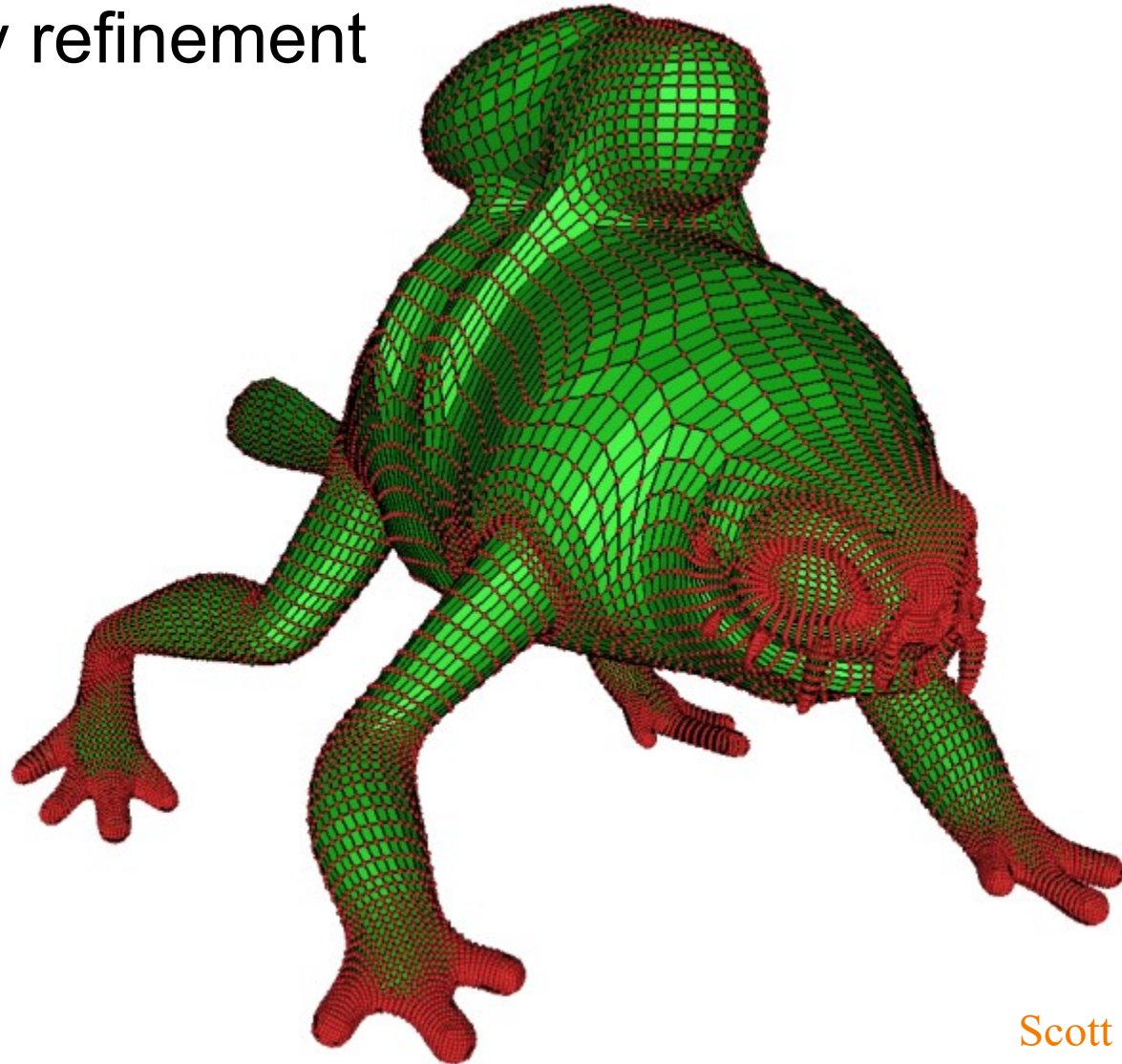
- Geometry refinement



Subdivision Surfaces – Examples



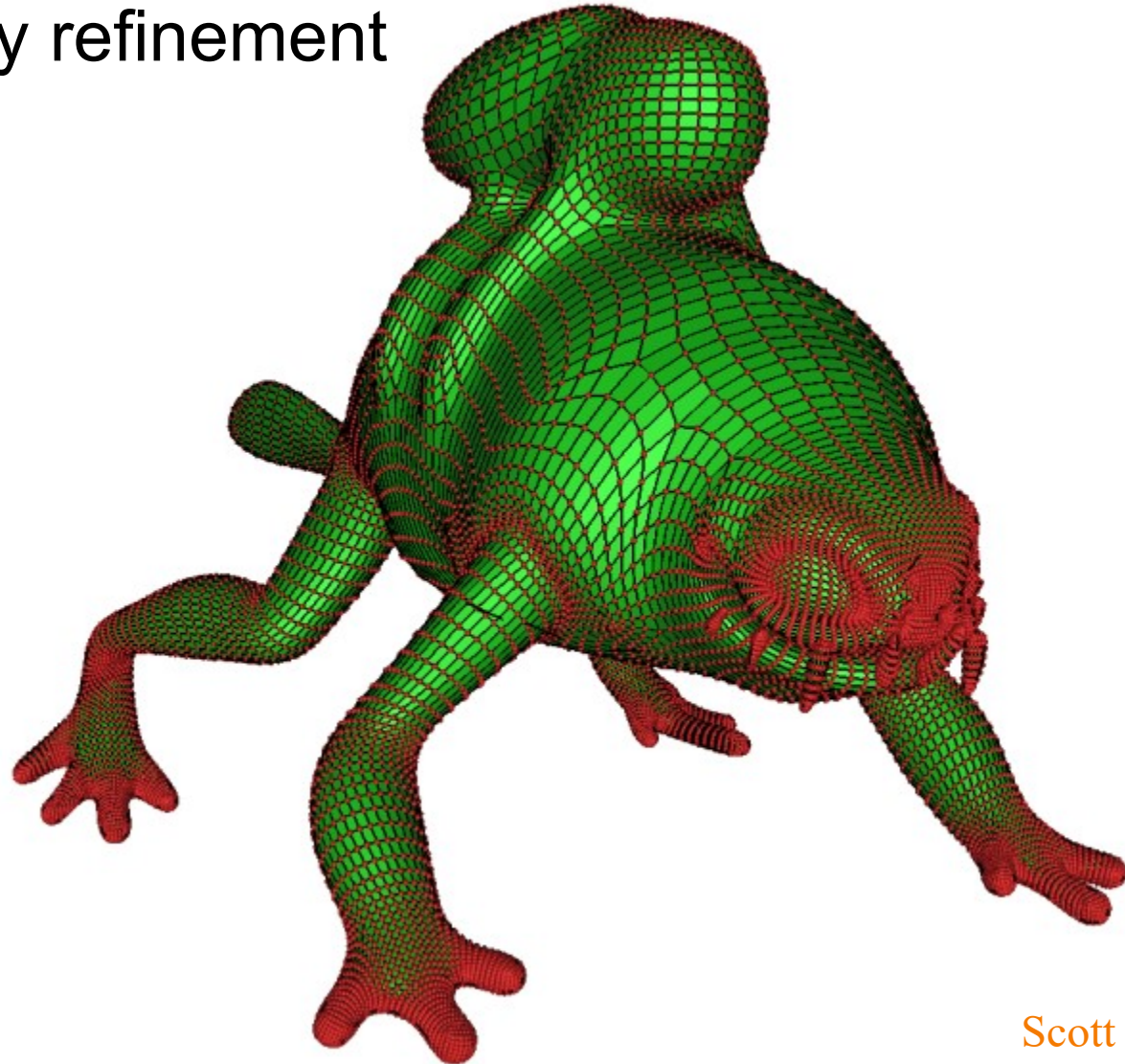
- Topology refinement



Subdivision Surfaces – Examples



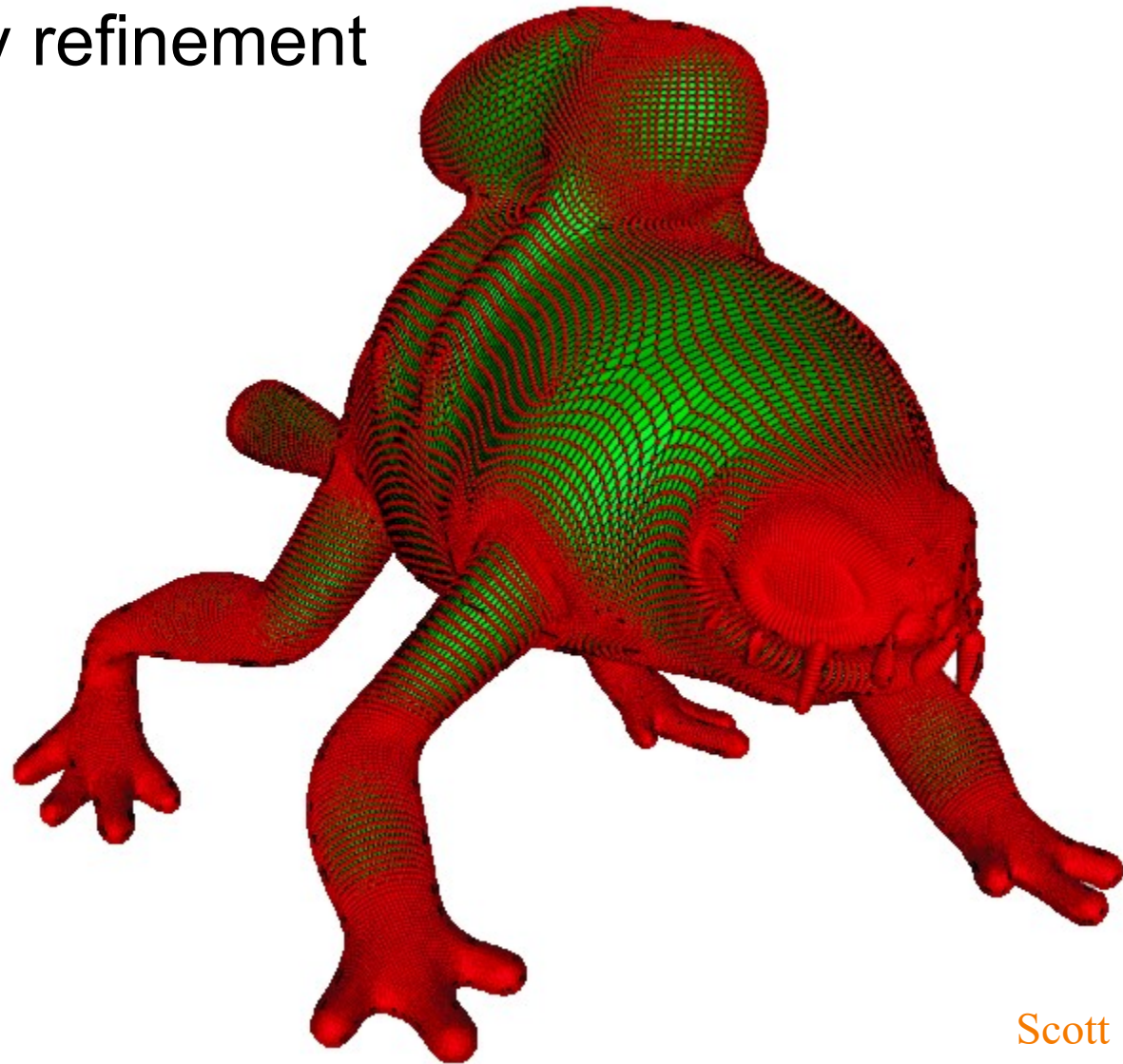
- Geometry refinement



Subdivision Surfaces – Examples



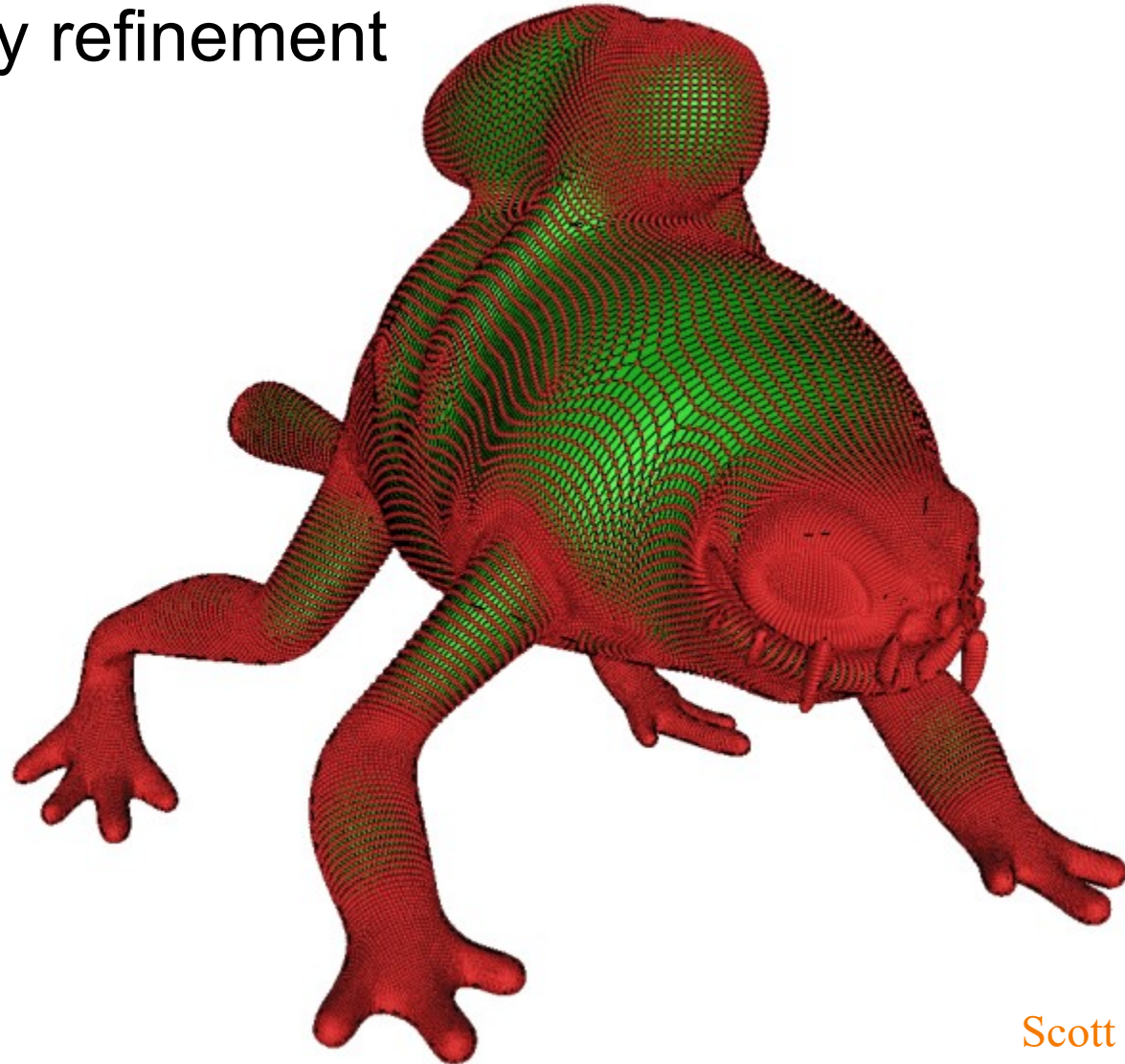
- Topology refinement



Subdivision Surfaces – Examples



- Geometry refinement

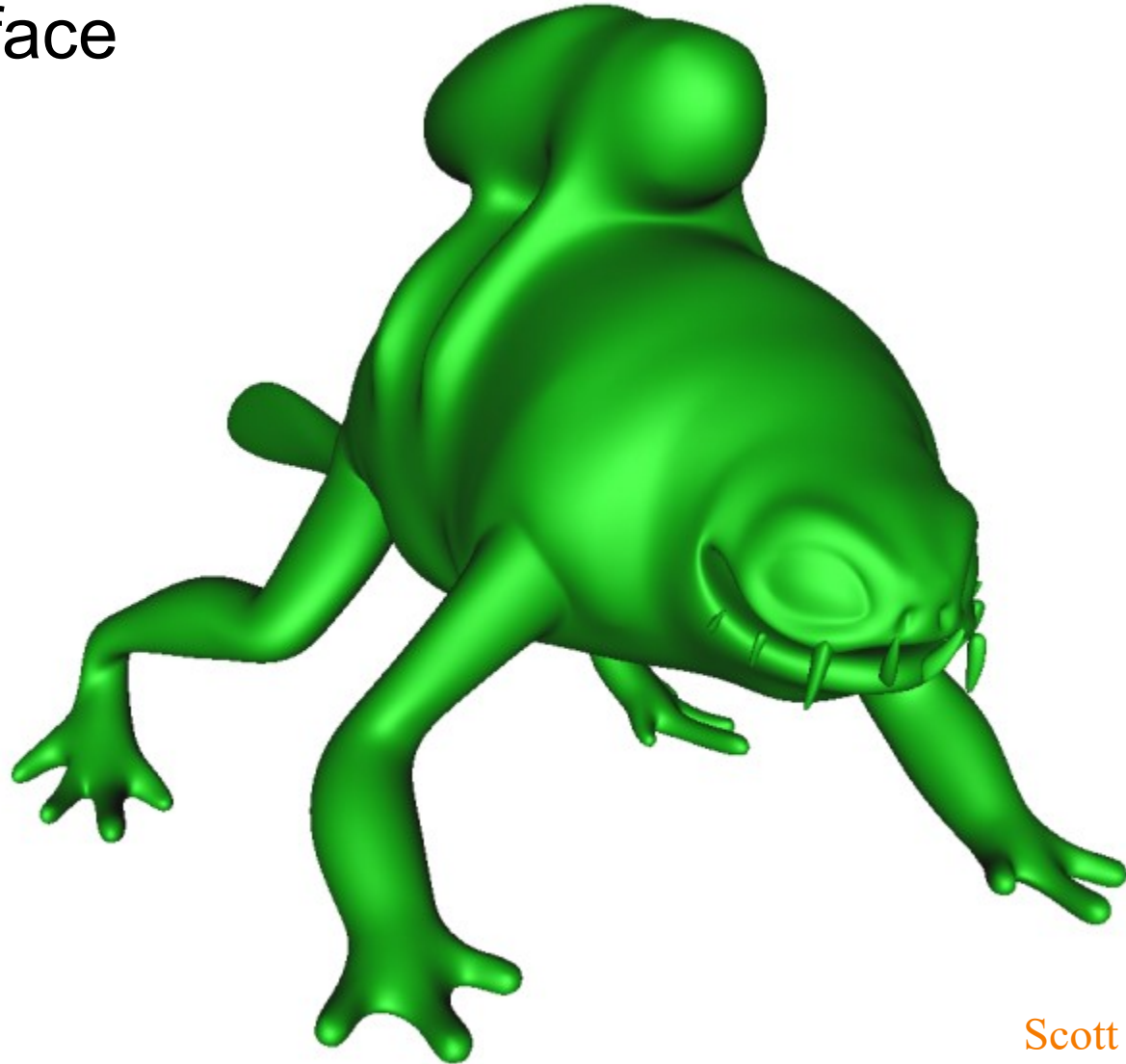


Scott Schaefer

Subdivision Surfaces – Examples



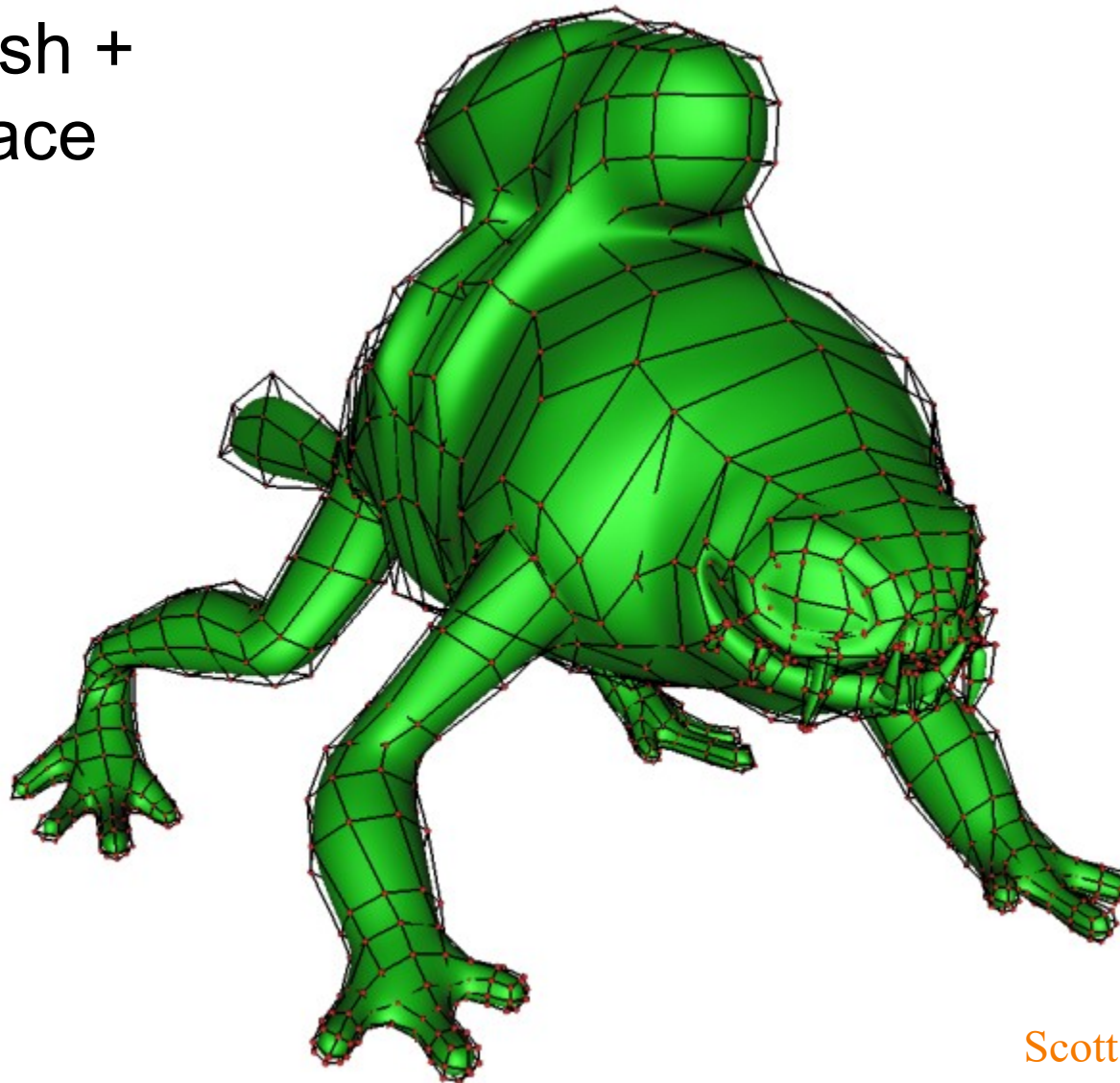
- Limit surface



Subdivision Surfaces – Examples



- Base mesh + limit surface



Meshlab demo



Scott Schaefer

Design of Subdivision Rules

- What types of input?
 - Quad meshes, triangle meshes, etc.
- How to refine topology?
 - Simple implementations
- How to refine geometry?
 - Smoothness guarantees in limit surface
 - » Continuity (C^0 , C^1 , C^2 , ...?)
 - Provable relationships between limit surface and original control mesh
 - » Interpolation of vertices?



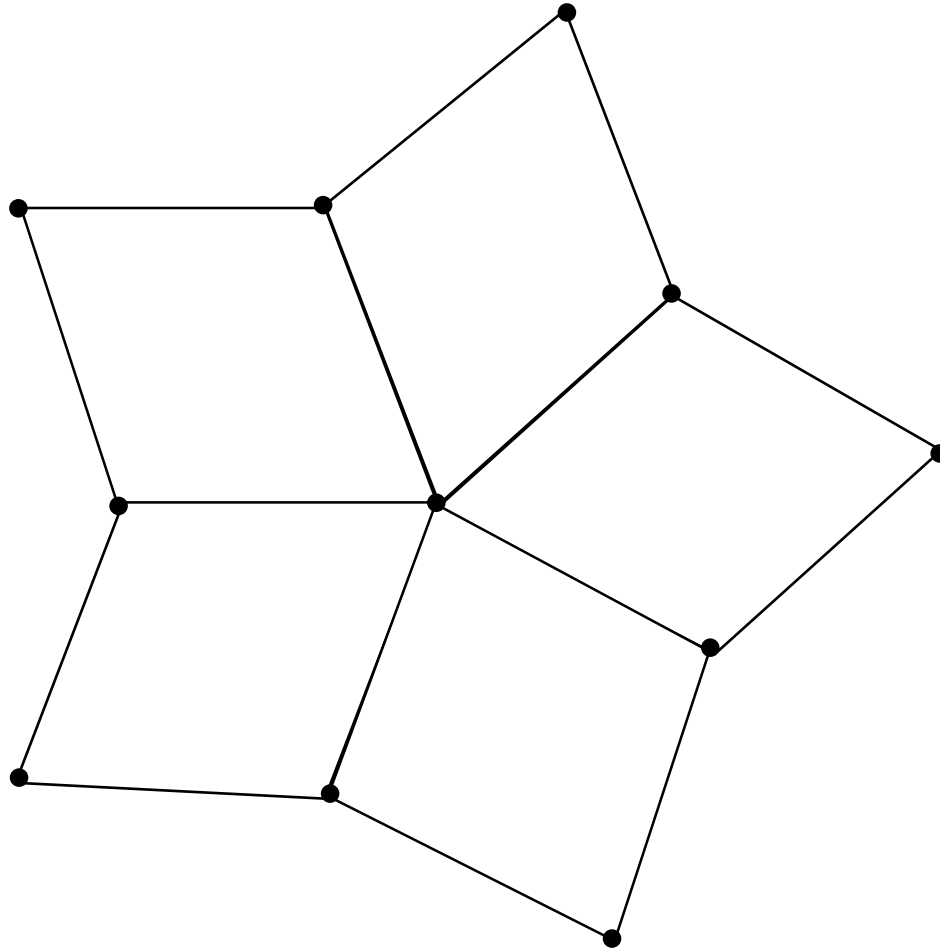


Linear Subdivision

- Type of input
 - Quad mesh -- four-sided polygons (*quads*)
 - Any number of quads may touch each vertex
- Topology refinement rule
 - Split every quad into four at midpoints
- Geometry refinement rule
 - Average vertex positions

This is a simple example to demonstrate how subdivision schemes work

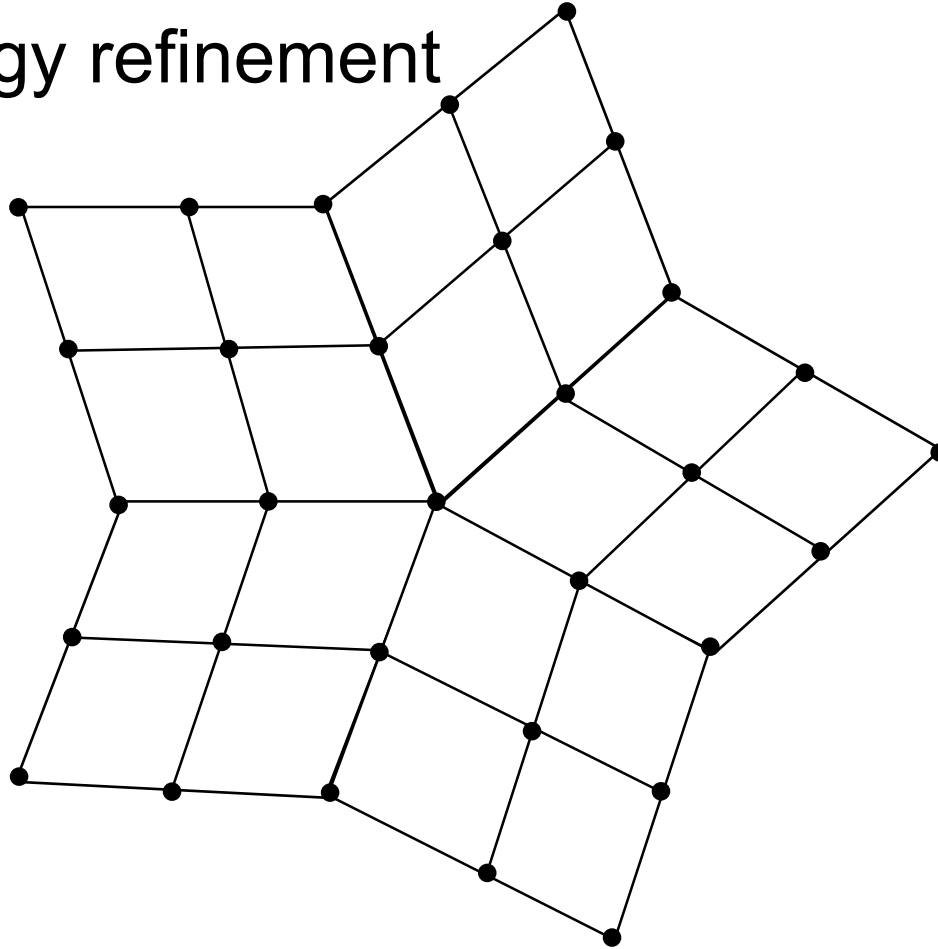
Linear Subdivision



Linear Subdivision

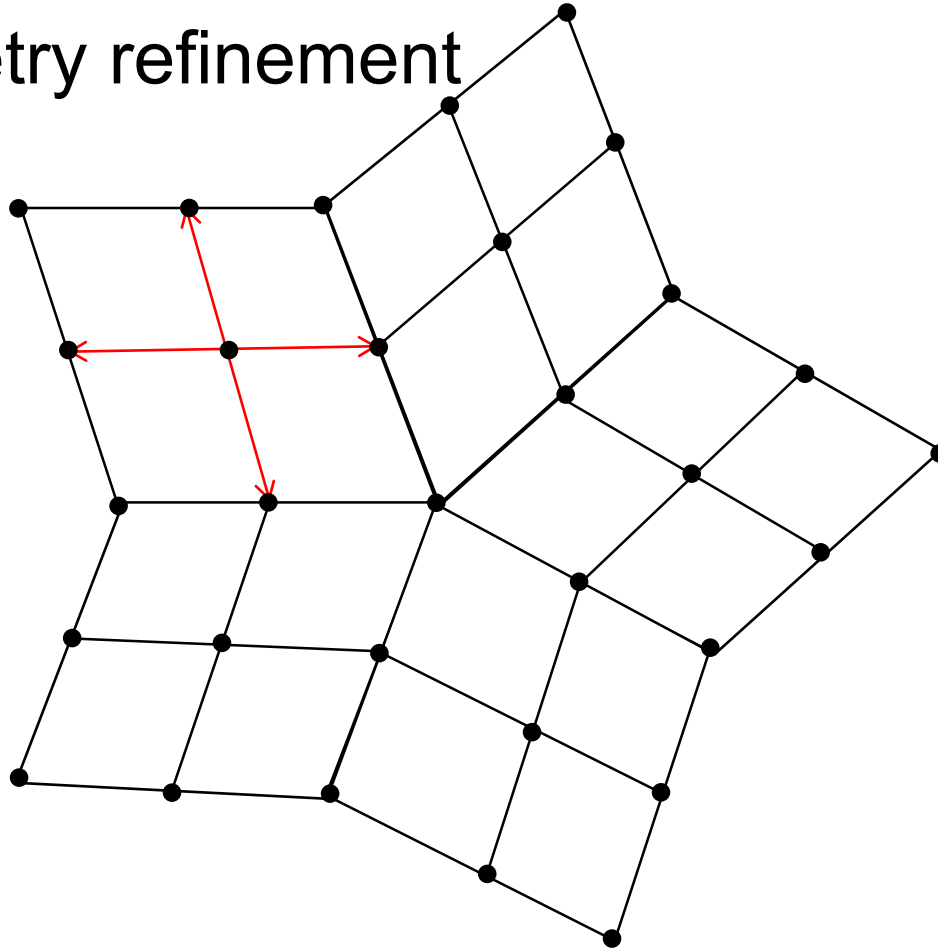


- Topology refinement



Linear Subdivision

- Geometry refinement





Linear Subdivision

LinearSubdivision (F_0, V_0, k)

for $i = 1 \dots k$ levels

$(F_i, V_i) = \text{RefineTopology}(F_{i-1}, V_{i-1})$

$\text{RefineGeometry}(F_i, V_i)$

return (F_k, V_k)



Linear Subdivision

RefineTopology (F, V)

$newV = V$

$newF = \{ \}$

for each face F_i

 Insert new vertex c at centroid of F_i into $newV$

 for $j = 1$ to 4

 Insert in $newV$ new vertex e_j at
 centroid of each edge ($F_{i,j}, F_{i,j+1}$)

 for $j = 1$ to 4

 Insert new face ($F_{i,j}, e_j, c, e_{j-1}$) into $newF$

return ($newF, newV$)



Linear Subdivision

RefineGeometry(F , V)

$newV = V$

$newF = F$

for each vertex V_i in $newV$

$weight = 0$;

$newV[i] = (0,0,0)$

for each face F_j connected to V_i

$newV[i] += \text{centroid of } F_j$

$weight += 1.0$;

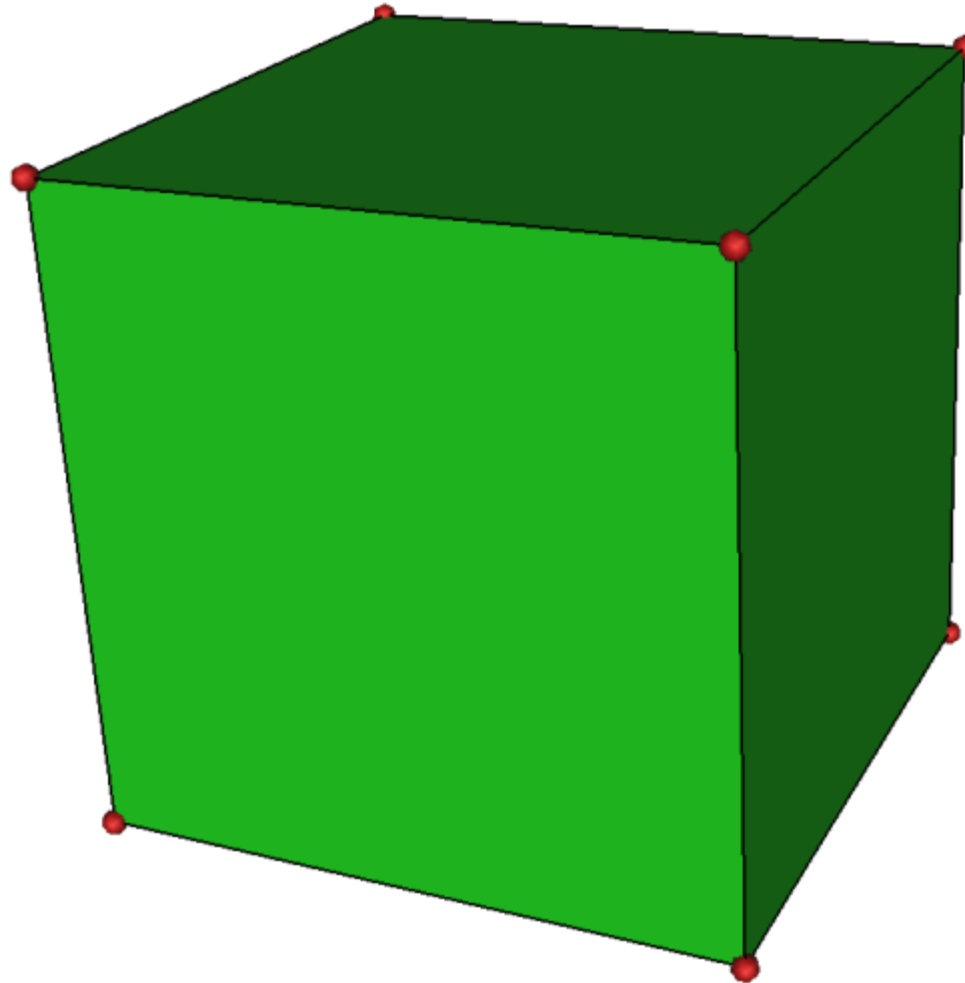
$newV[i] /= weight$

return ($newF$, $newV$)



Linear Subdivision

- Example

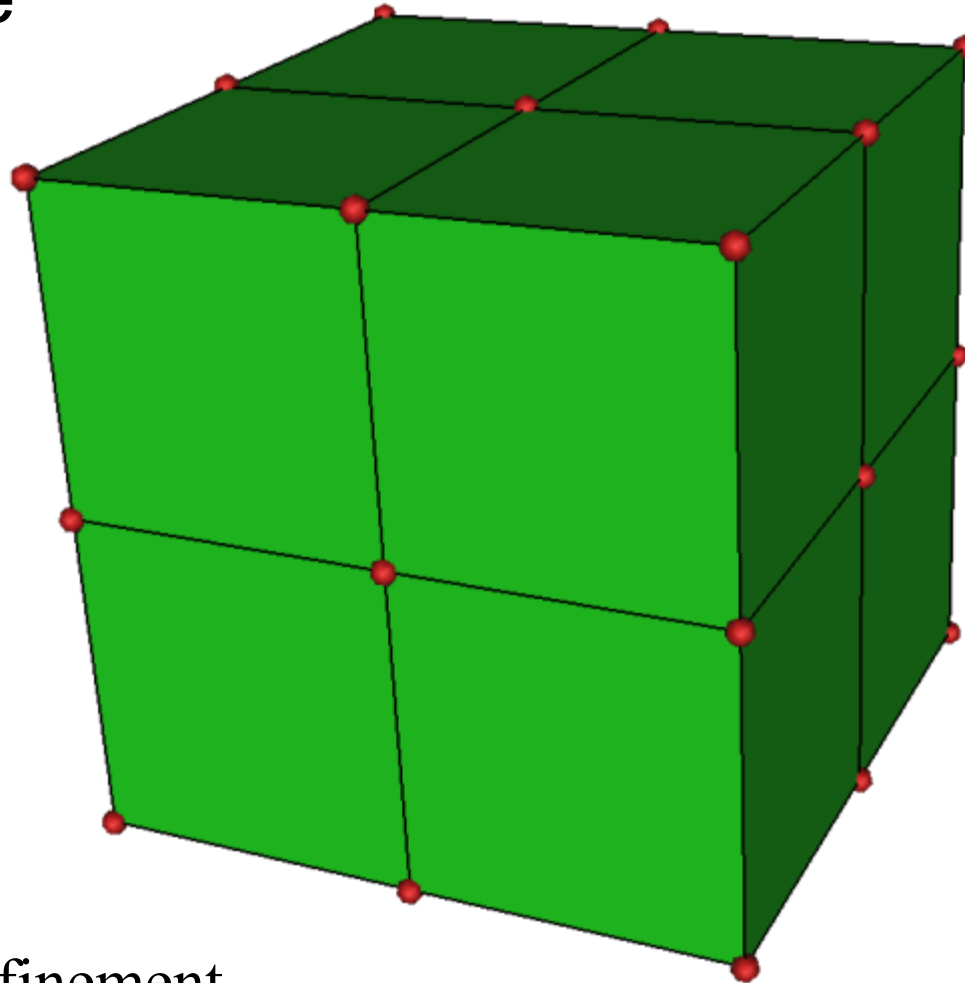


Input mesh

Scott Schaefer

Linear Subdivision

- Example

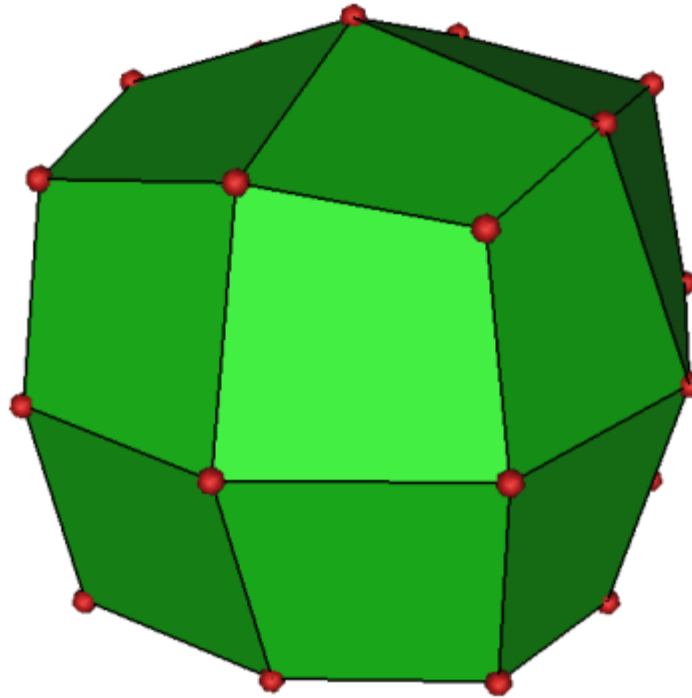


Topology refinement

Linear Subdivision



- Example



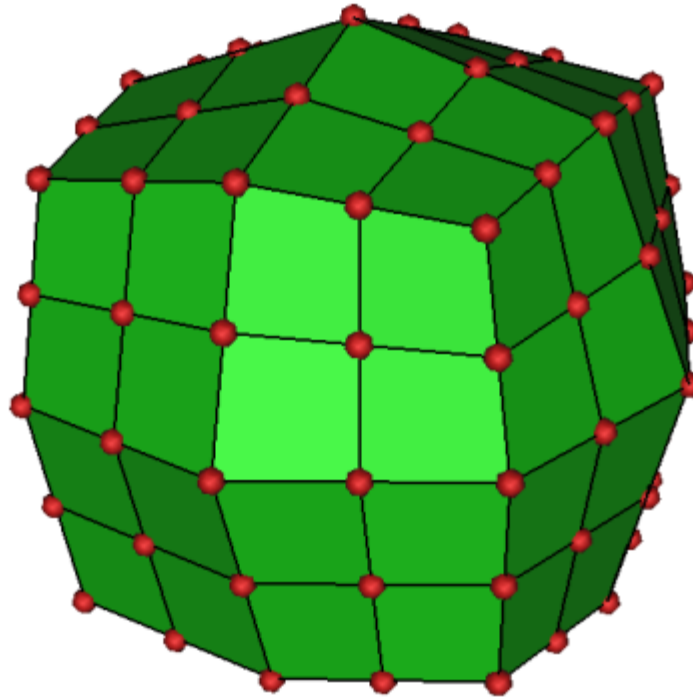
Geometry refinement

Scott Schaefer

Linear Subdivision



- Example



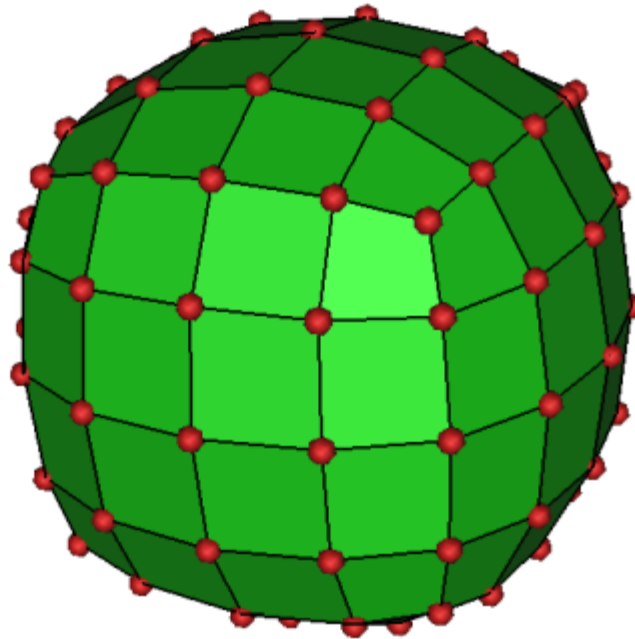
Topology refinement

Scott Schaefer

Linear Subdivision



- Example



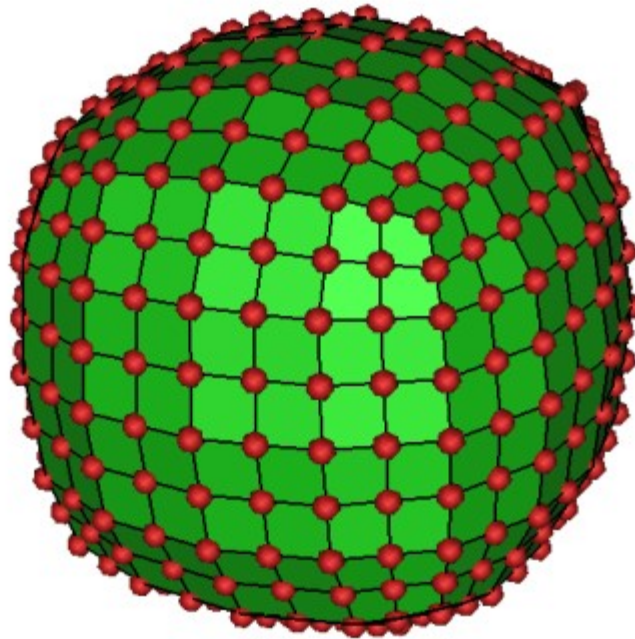
Geometry refinement

Scott Schaefer

Linear Subdivision



- Example



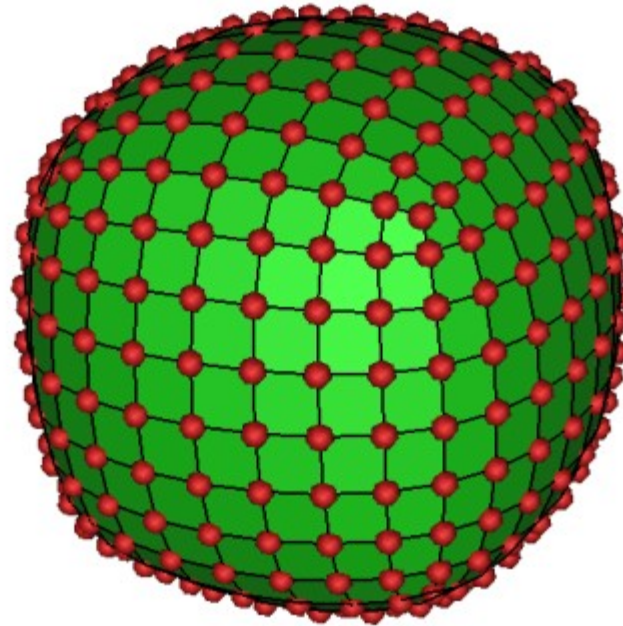
Topology refinement

Scott Schaefer

Linear Subdivision



- Example



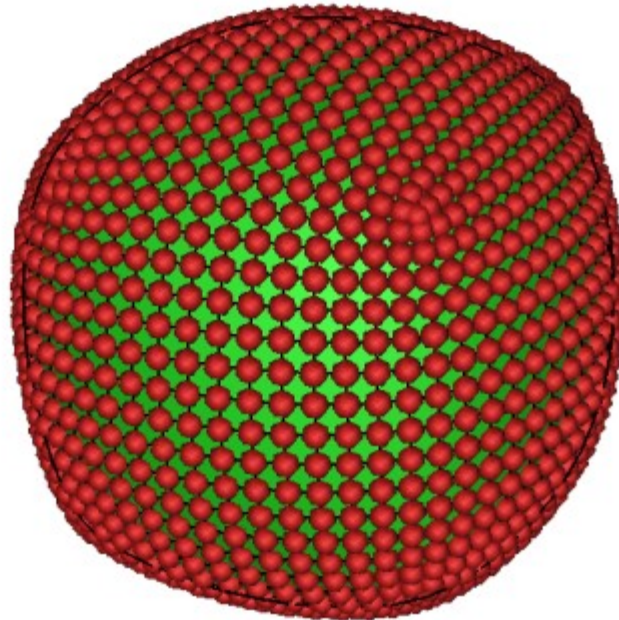
Geometry refinement

Scott Schaefer

Linear Subdivision



- Example



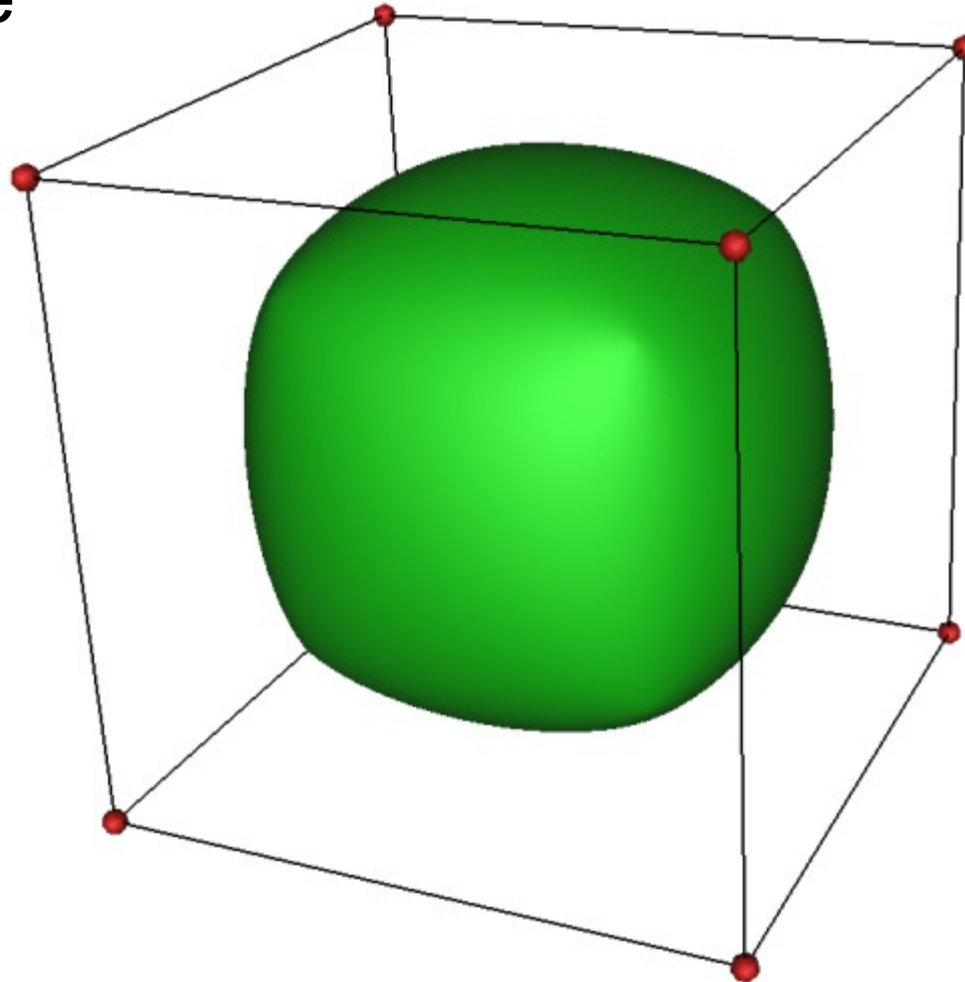
Topology refinement

Scott Schaefer

Linear Subdivision



- Example



Final result

Scott Schaefer

Subdivision Schemes



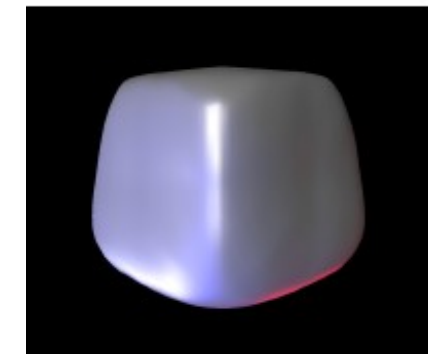
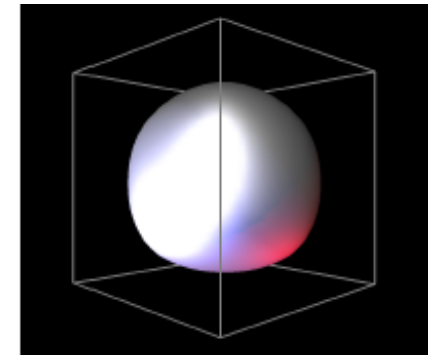
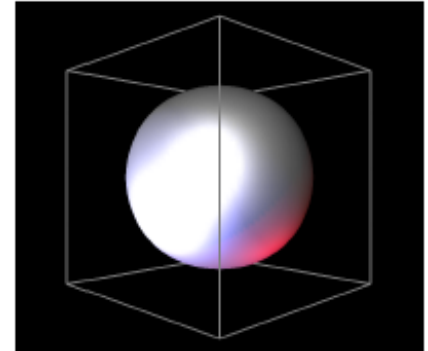
- Common subdivision schemes
 - Catmull-Clark
 - Loop
 - Many others

- Differ in ...

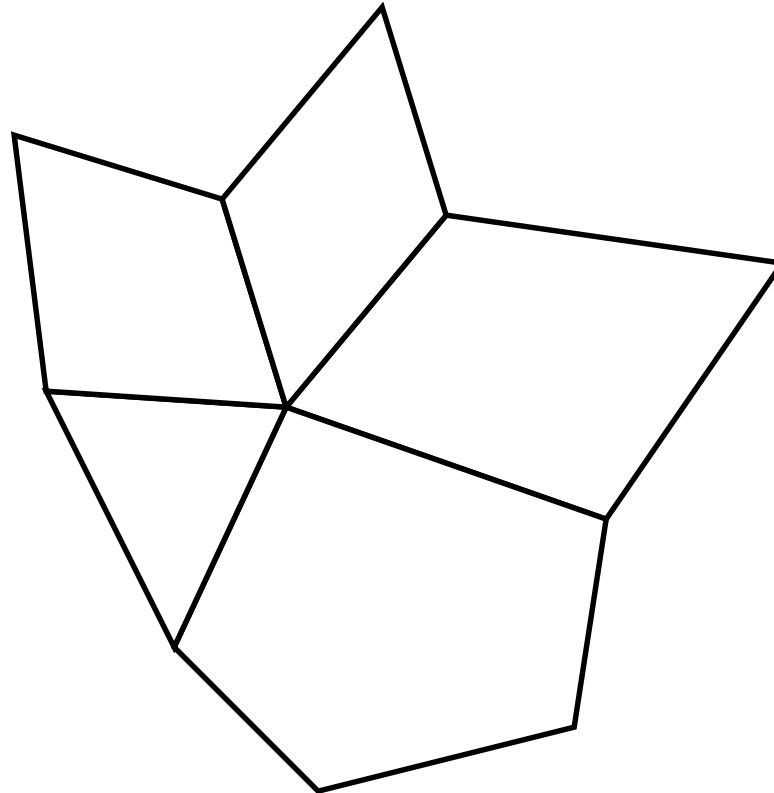
- Input topology
- How refine topology
- How refine geometry

... which makes differences in ...

- Provable properties

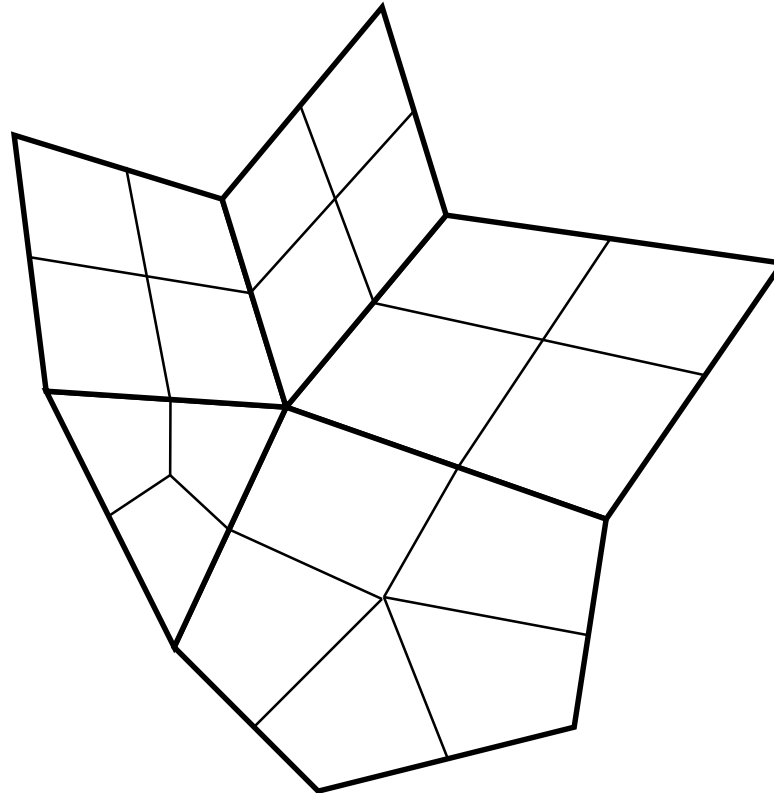


Catmull-Clark Subdivision



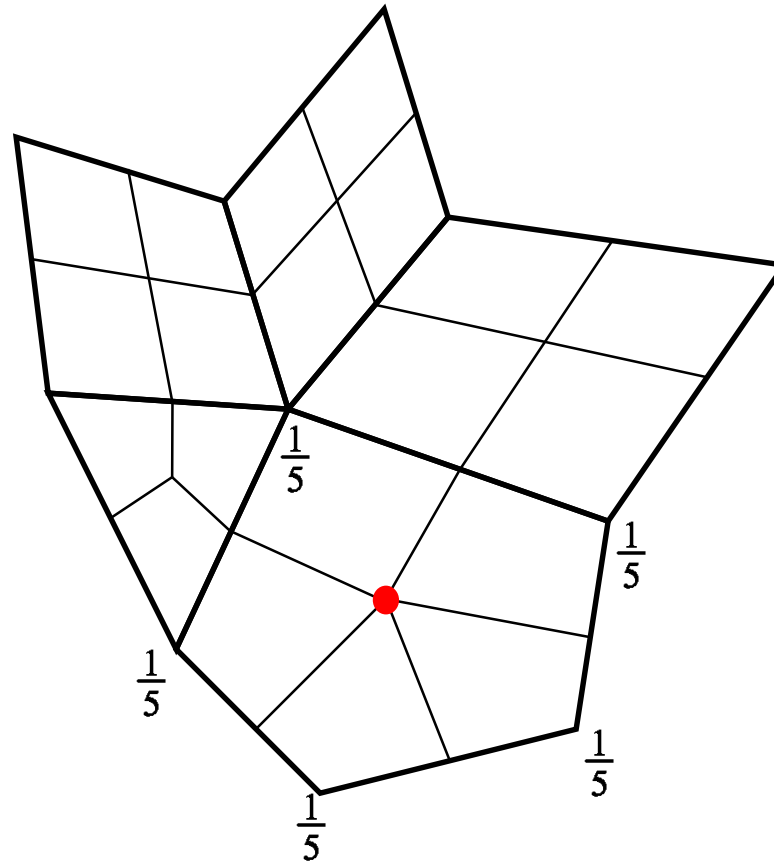
Scott Schaefer

Catmull-Clark Subdivision

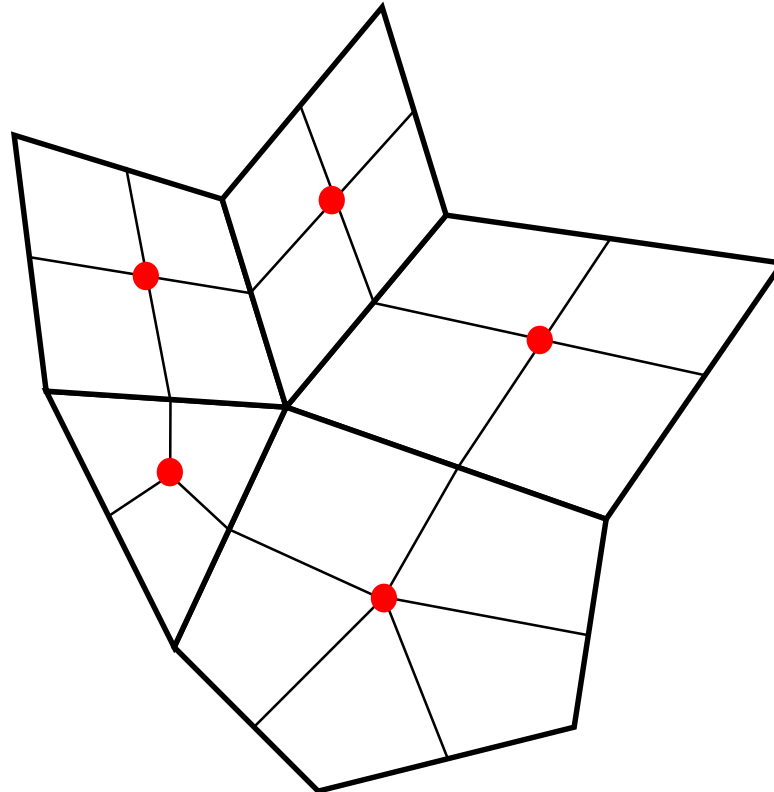


Scott Schaefer

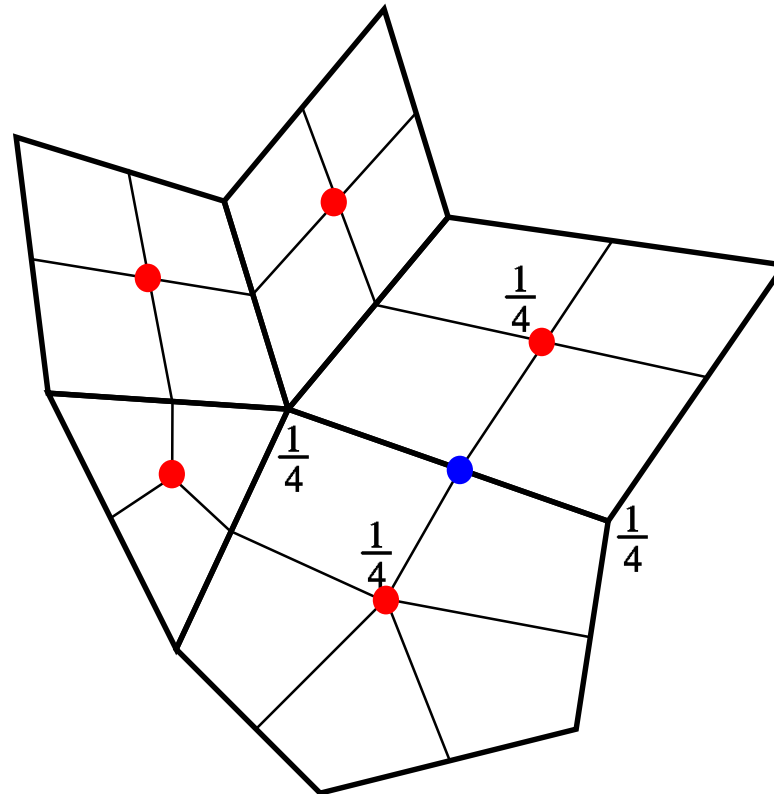
Catmull-Clark Subdivision



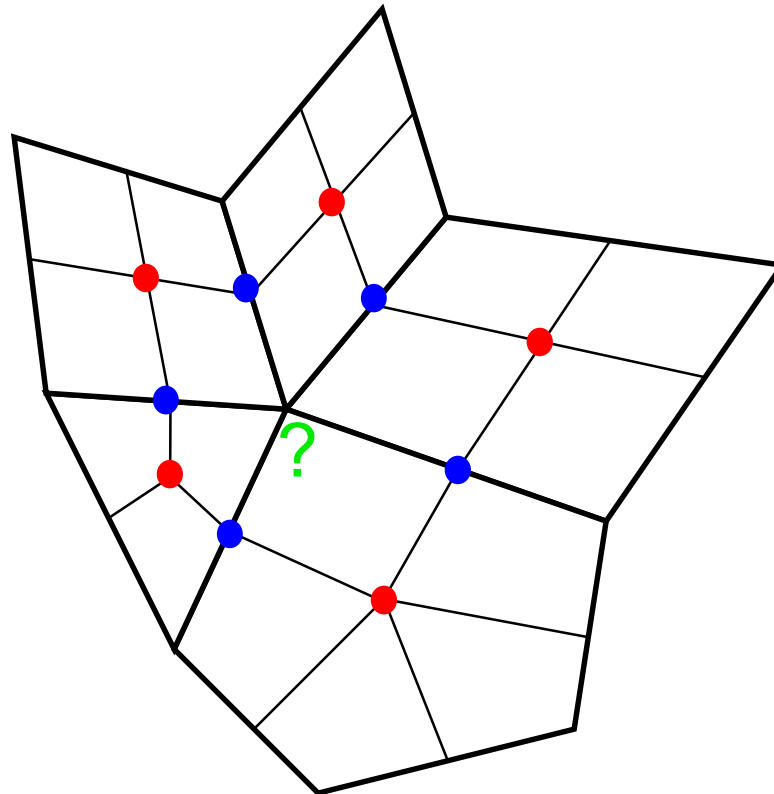
Catmull-Clark Subdivision



Catmull-Clark Subdivision



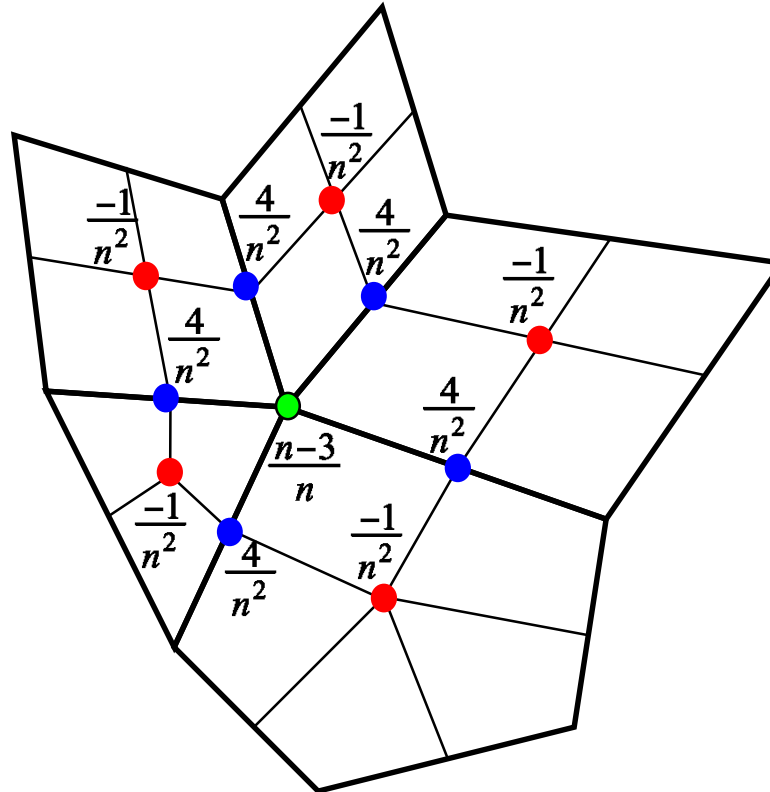
Catmull-Clark Subdivision



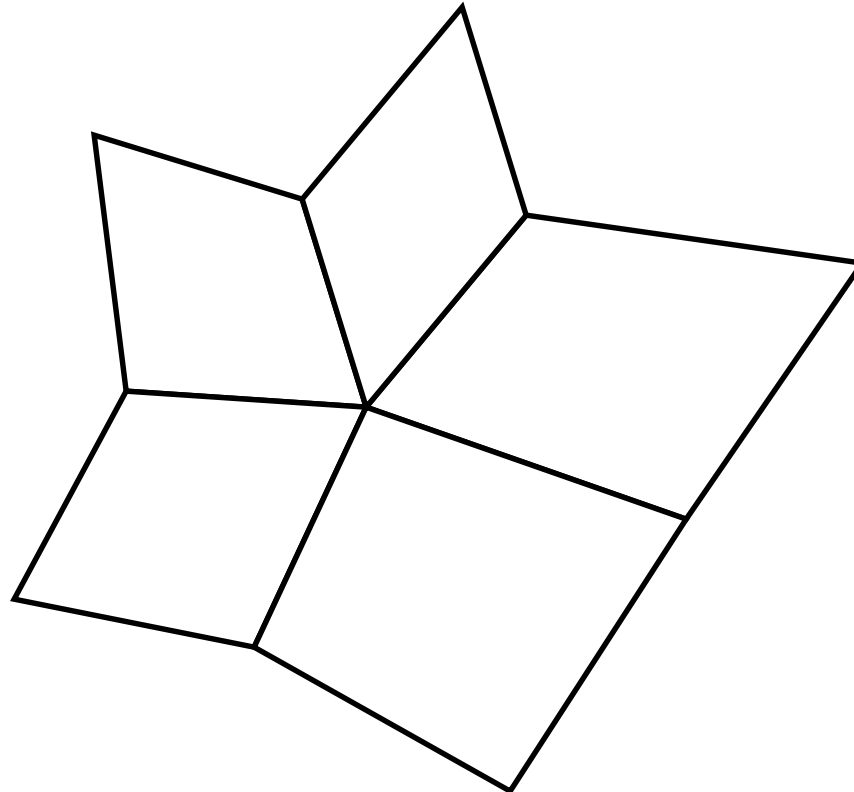


Catmull-Clark Subdivision

$$\text{New } \bullet = \left(4 * \text{avg of } \bullet - 1 * \text{avg of } \bullet + (n-3) * \bullet \right) / n$$

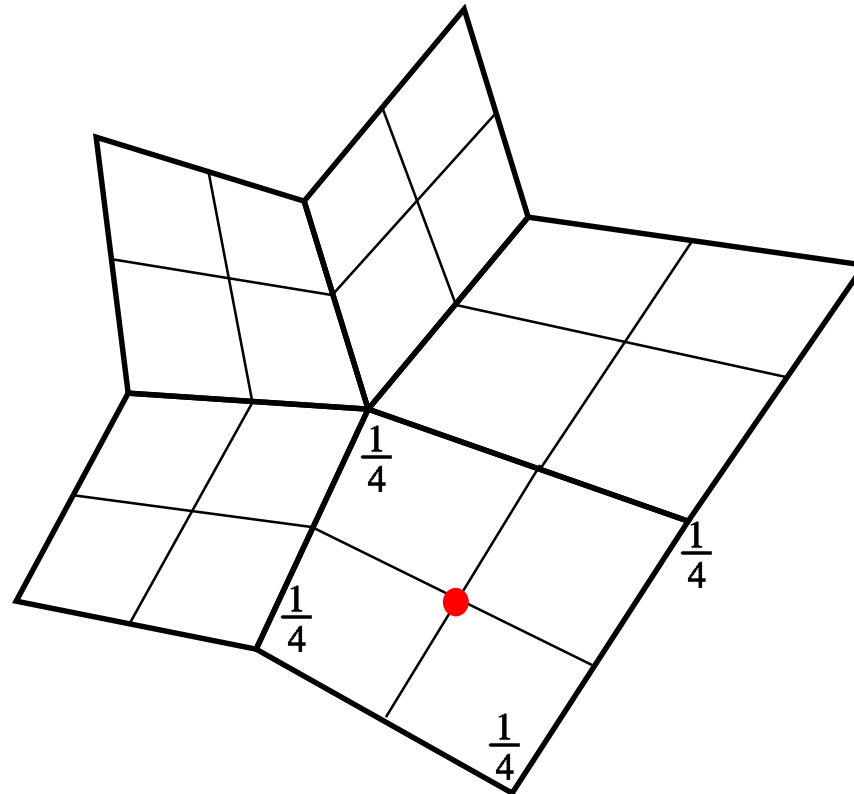


Catmull-Clark Subdivision

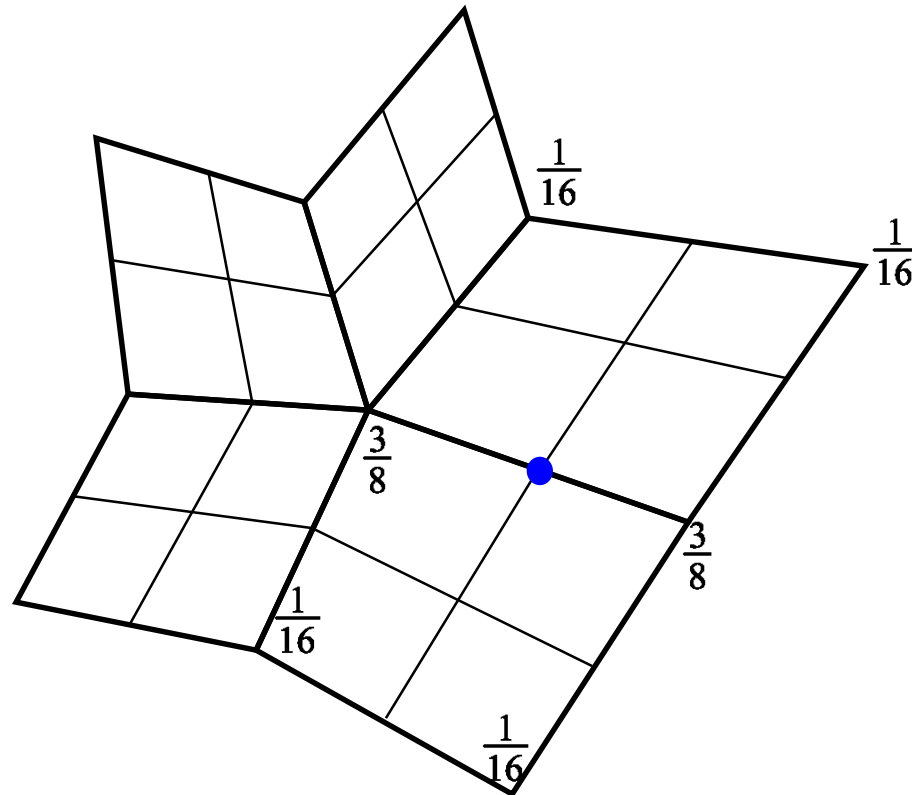


Scott Schaefer

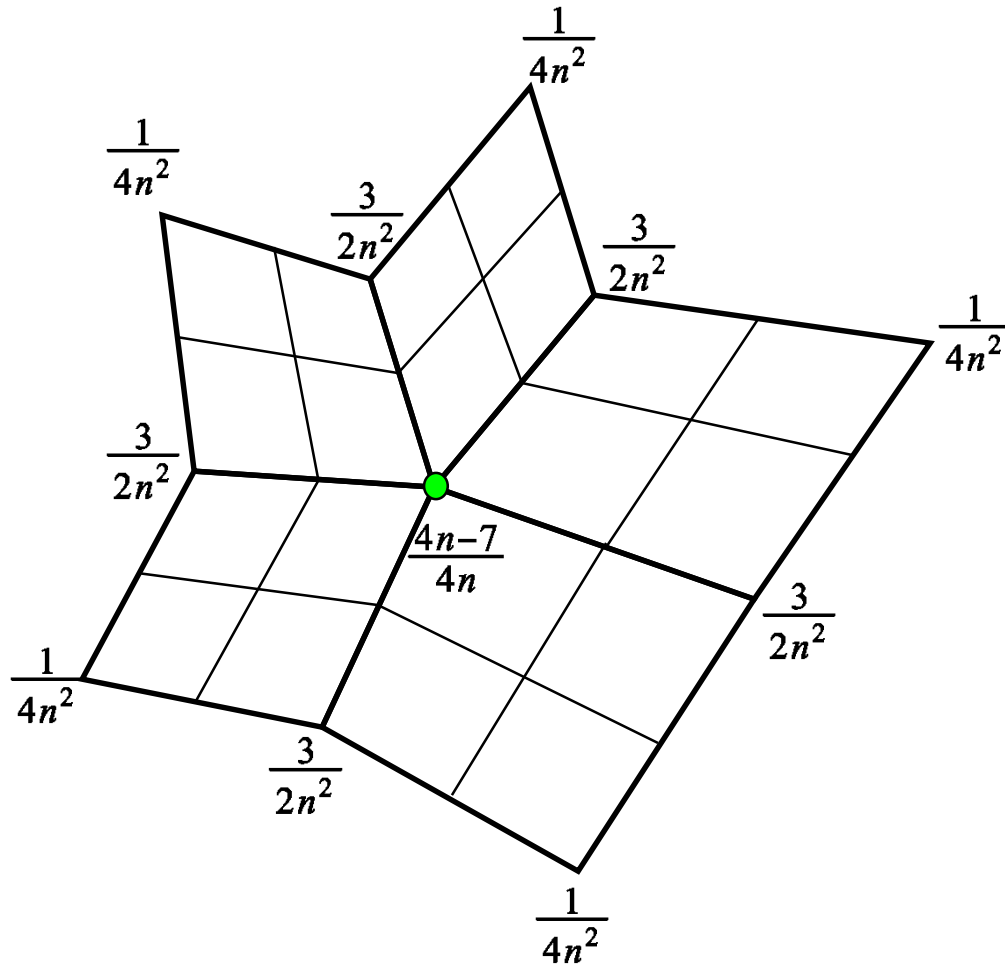
Catmull-Clark Subdivision



Catmull-Clark Subdivision



Catmull-Clark Subdivision



Catmull-Clark Subdivision

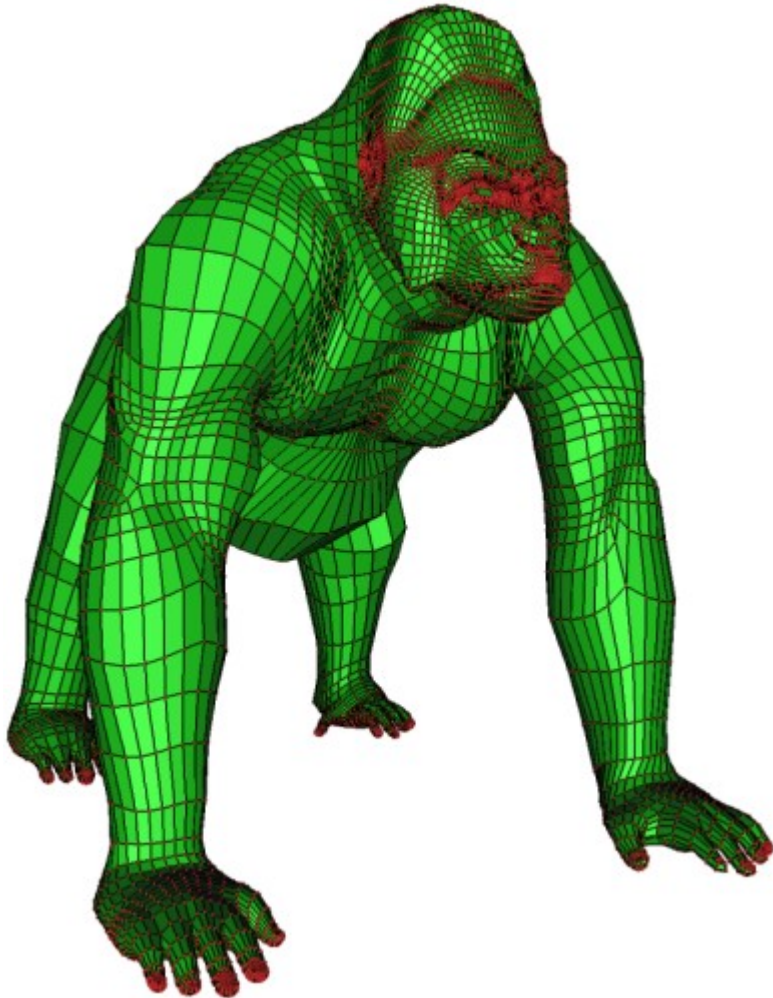


Linear
Subdivision



Catmull-Clark
Subdivision

Catmull-Clark Subdivision



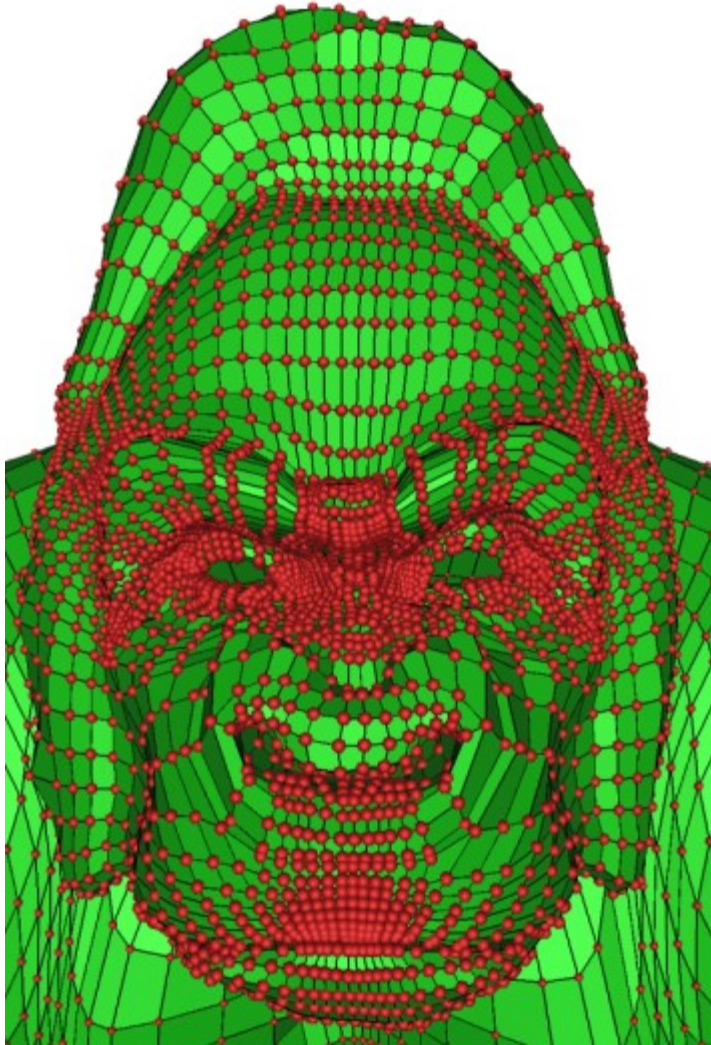
Scott Schaefer

Catmull-Clark Subdivision



Scott Schaefer

Catmull-Clark Subdivision



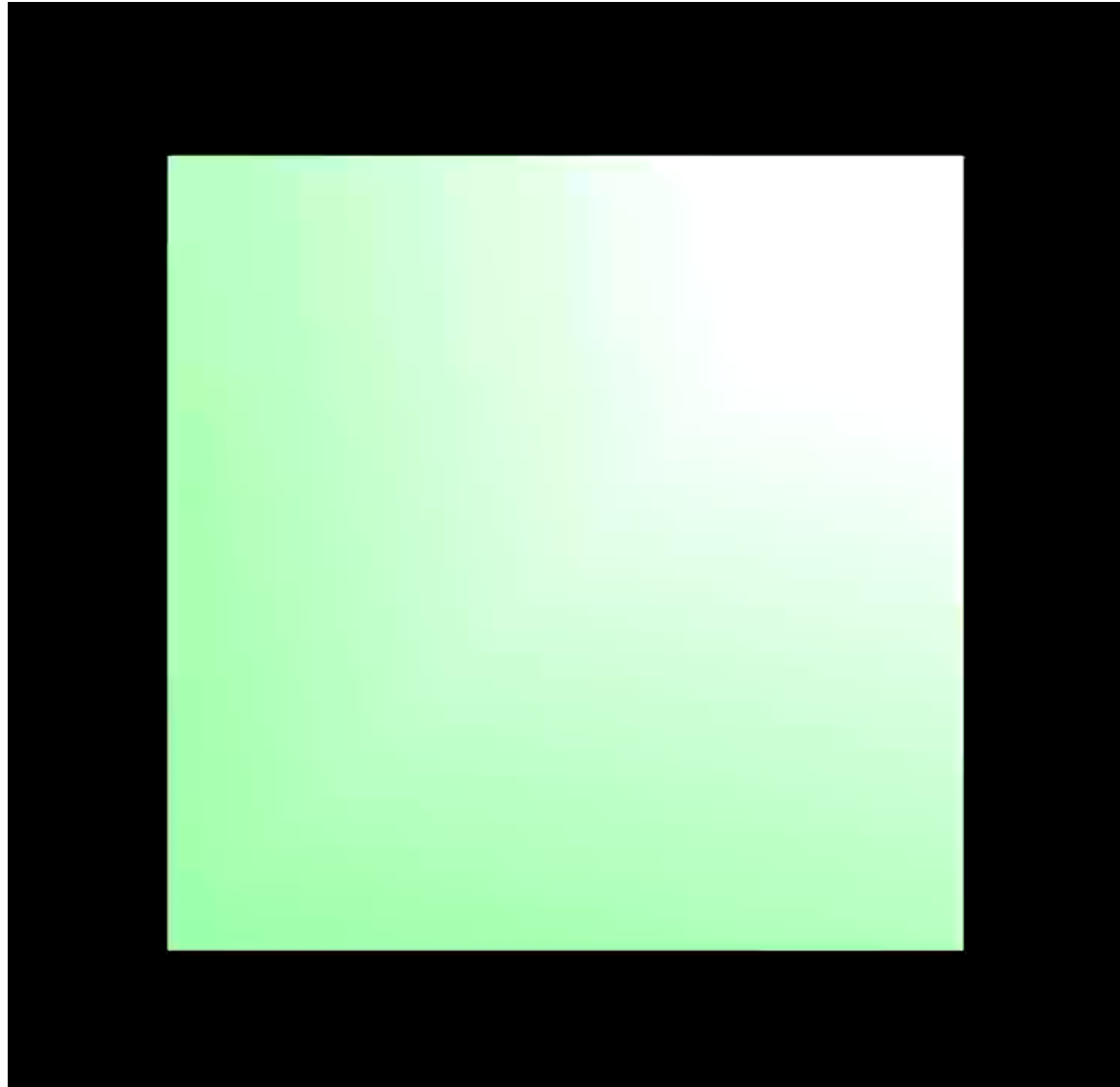
Scott Schaefer

Catmull-Clark Subdivision



Scott Schaefer

Catmull-Clark Subdivision





Catmull-Clark Subdivision

- One round of subdivision produces all quads
- Smoothness of limit surface
 - C^2 almost everywhere
 - C^1 at vertices with valence $\neq 4$
- Relationship to control mesh
 - Does not interpolate input vertices
 - Within convex hull
- Most commonly used subdivision scheme in the movies...



Subdivision Schemes

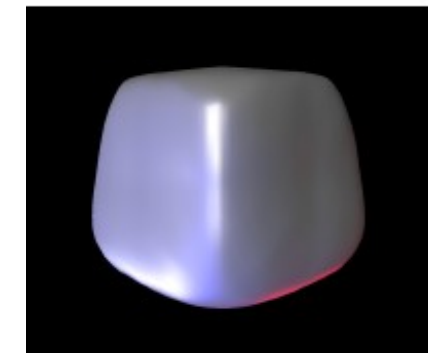
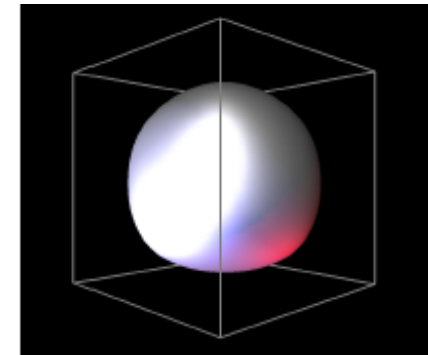
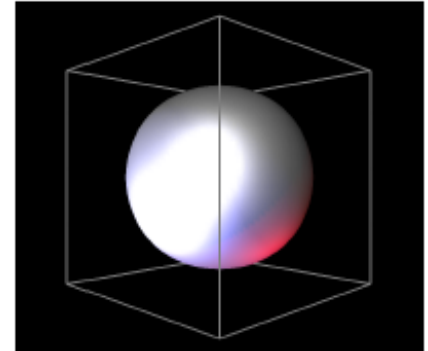


- Common subdivision schemes
 - Catmull-Clark
 - Loop
 - Many others

- Differ in ...
 - Input topology
 - How refine topology
 - How refine geometry

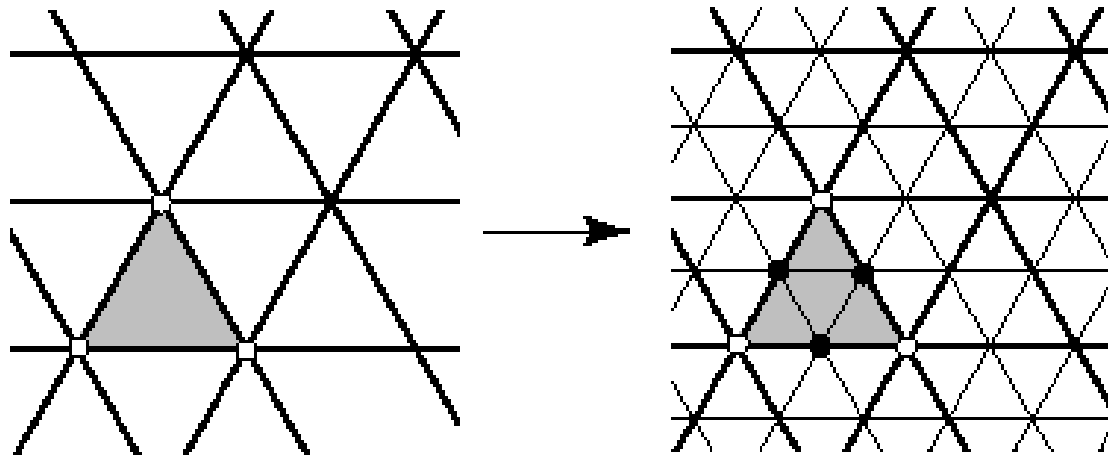
... which makes differences in ...

- Provable properties



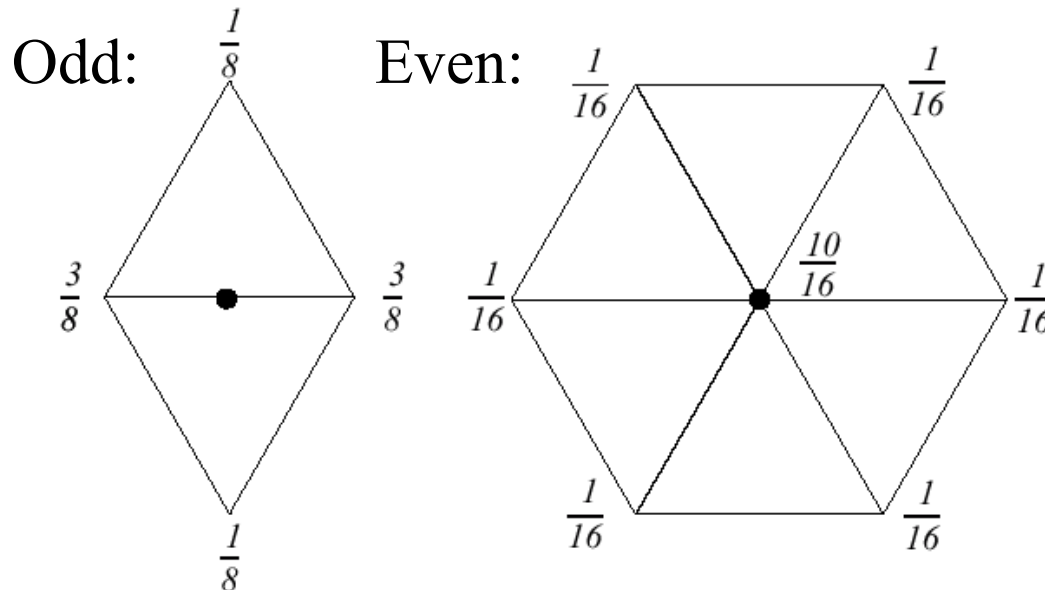
Loop Subdivision

- Operates on pure triangle meshes
- Subdivision rules
 - Linear subdivision
 - Averaging rules for “even / odd” (white / black) vertices



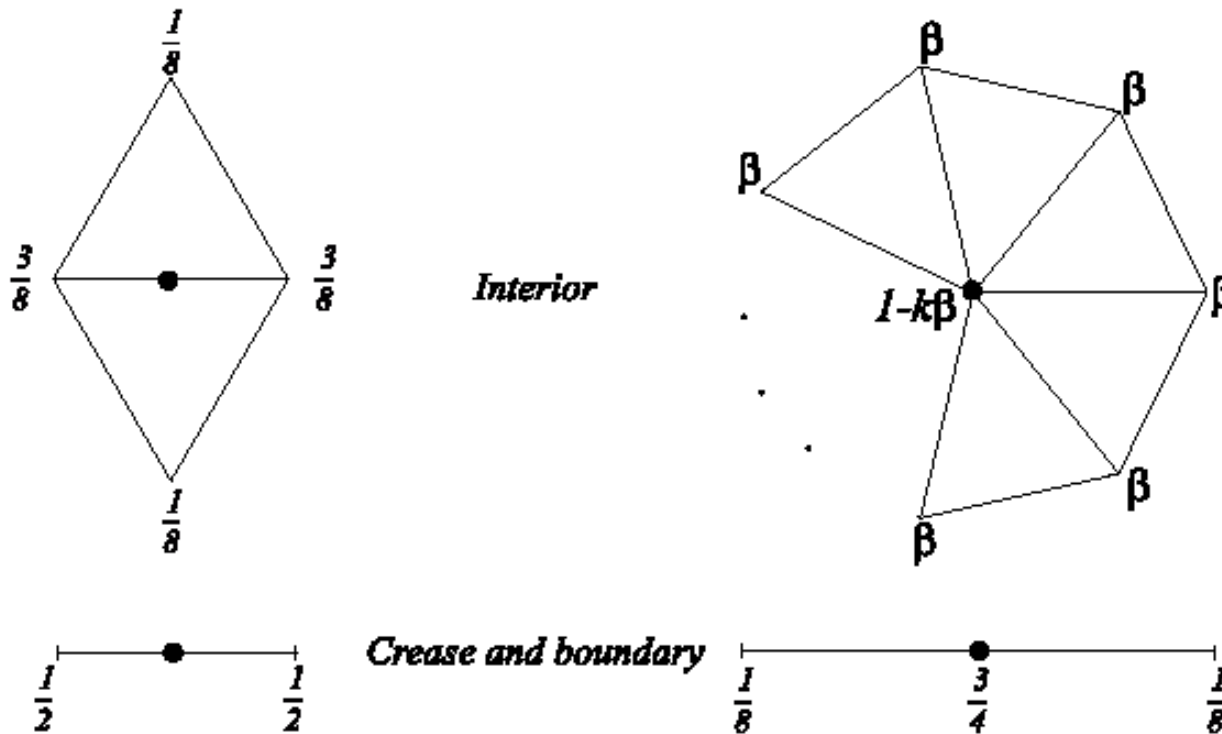
Loop Subdivision

- Averaging rules
 - Weights for “odd” and “even” vertices



Loop Subdivision

- Rules for *extraordinary vertices* and *boundaries*:



a. Masks for odd vertices

b. Masks for even vertices



Loop Subdivision

- How to choose β ?
 - Analyze properties of limit surface
 - Interested in continuity of surface and smoothness
 - Involves calculating eigenvalues of matrices

» Original Loop

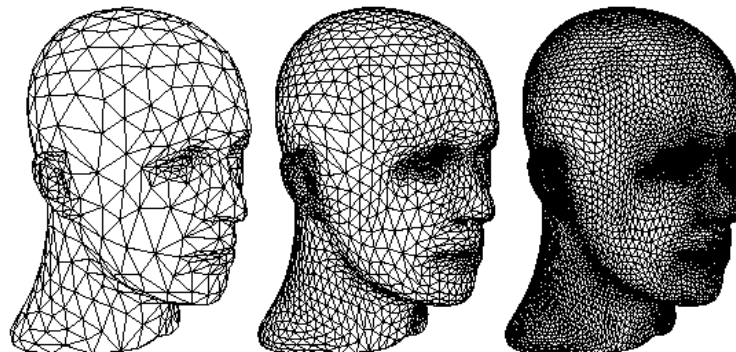
$$\beta = \frac{1}{n} \left(\frac{5}{8} - \left(\frac{3}{8} + \frac{1}{4} \cos \frac{2\pi}{n} \right)^2 \right)$$

» Warren

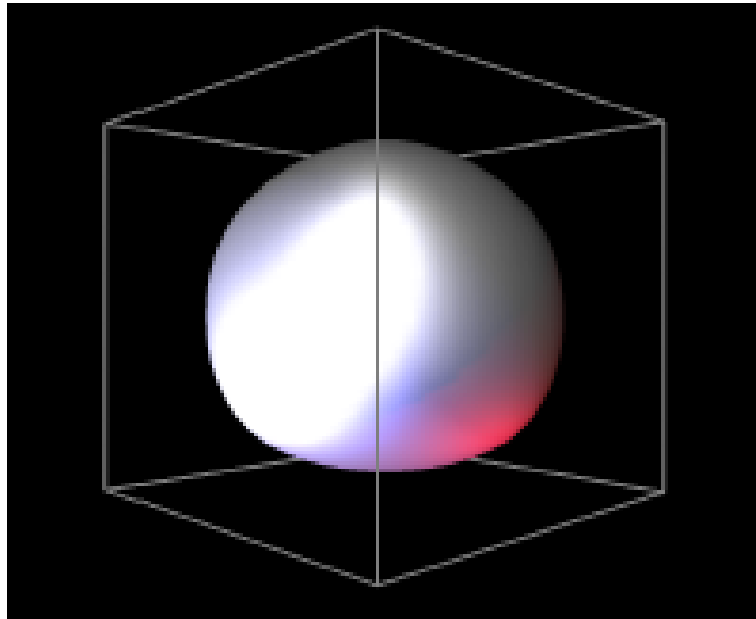
$$\beta = \begin{cases} \frac{3}{8n} & n > 3 \\ \frac{3}{16} & n = 3 \end{cases}$$

Loop Subdivision

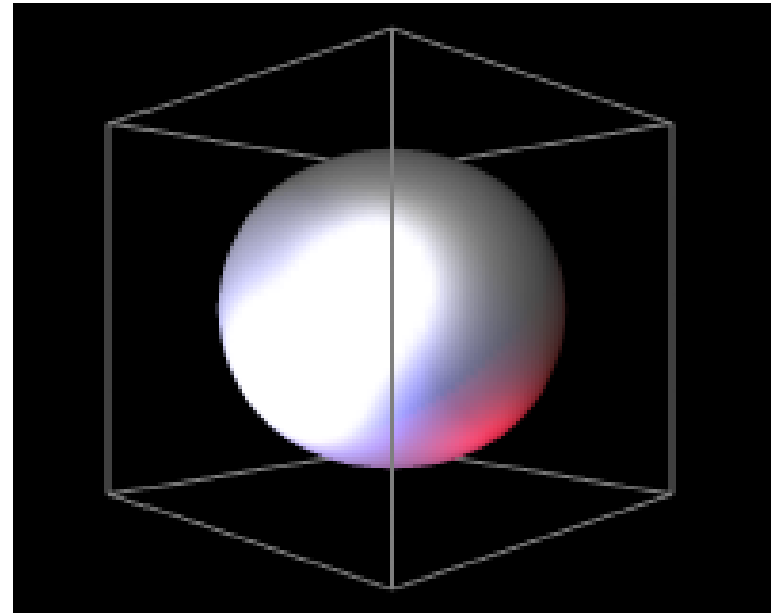
- Operates only on triangle meshes
- Smoothness of limit surface
 - C^2 almost everywhere
 - C^1 at vertices with valence $\neq 6$
- Relationship to control mesh
 - Does not interpolate input vertices
 - Within convex hull



Subdivision Schemes

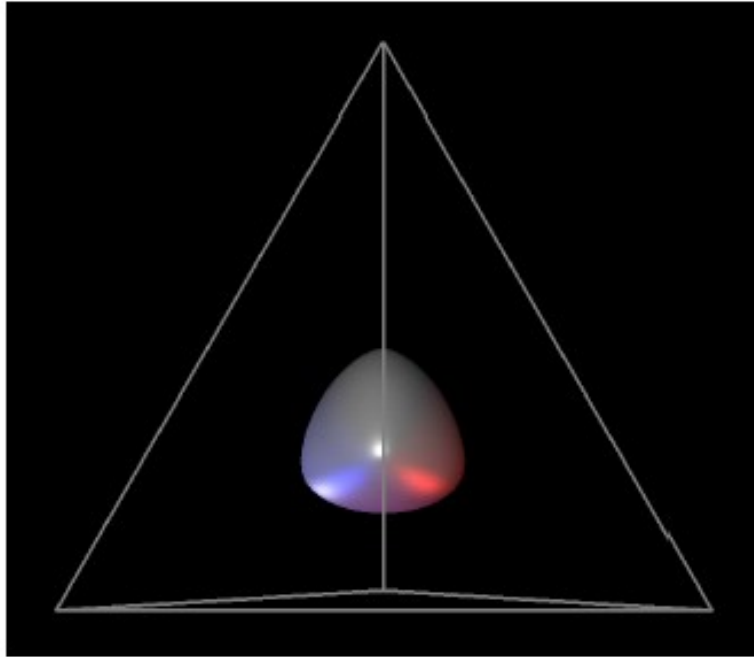


Loop

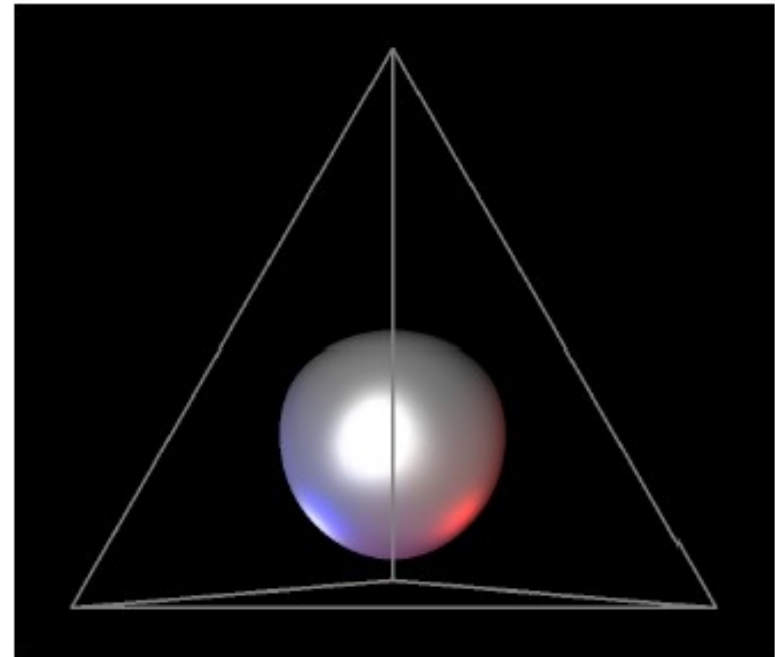


Catmull-Clark

Subdivision Schemes

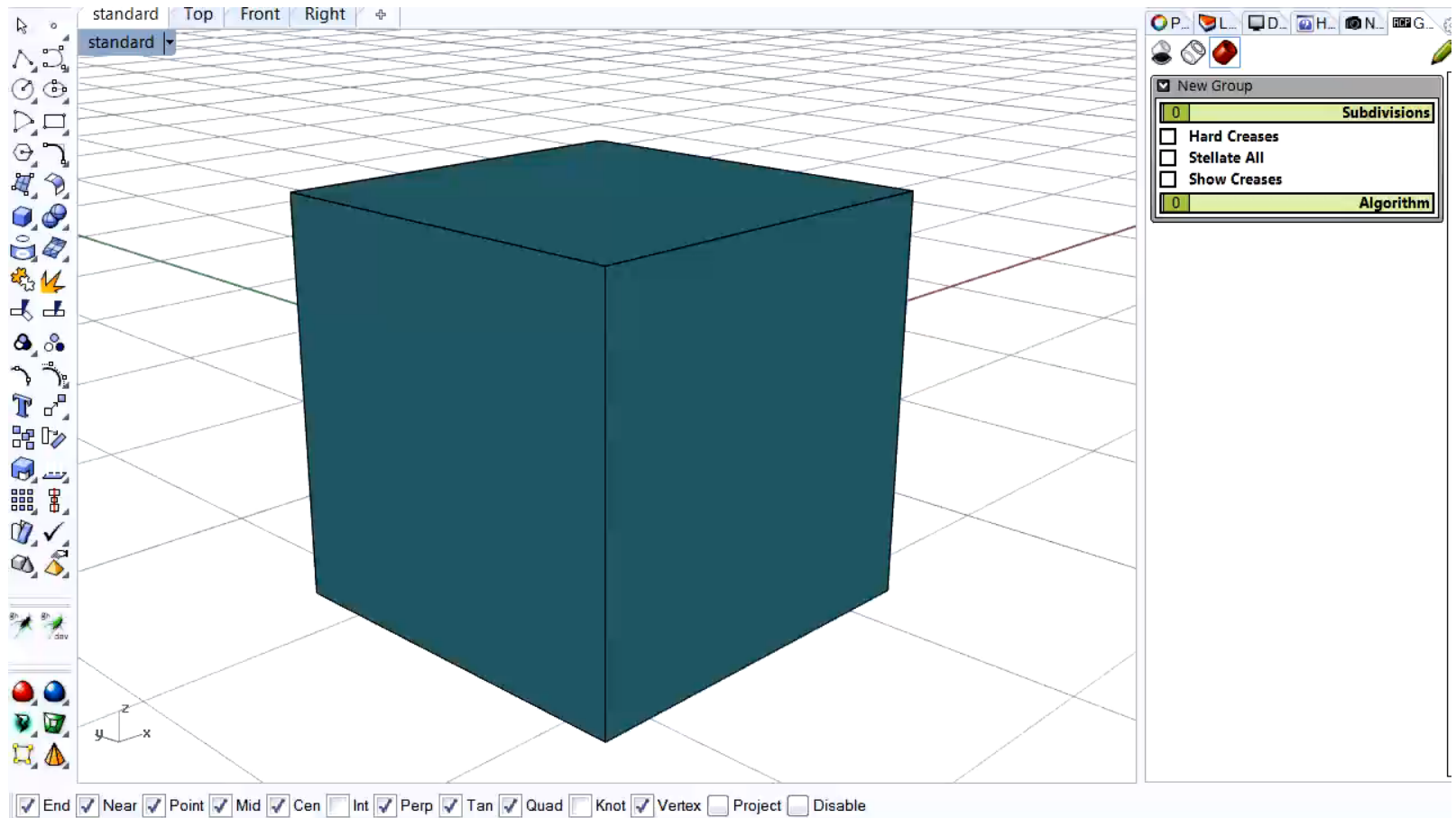


Loop



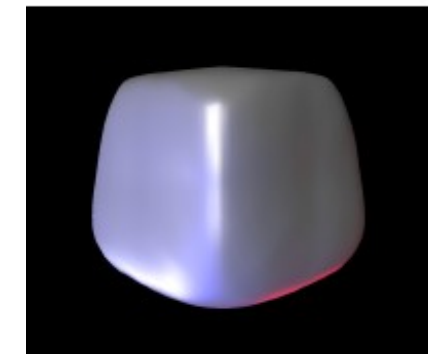
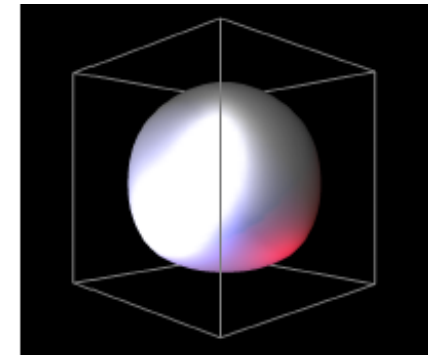
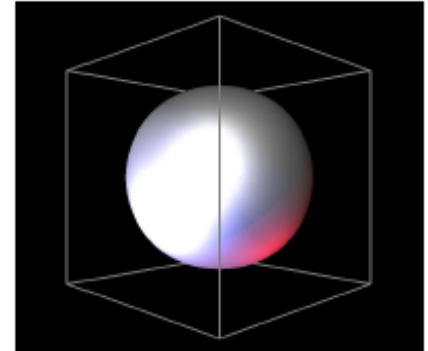
Catmull-Clark

Subdivision Schemes



Subdivision Schemes

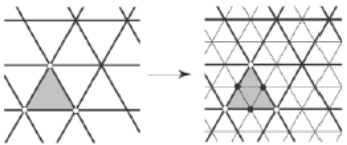
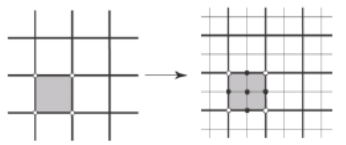
- Common subdivision schemes
 - Catmull-Clark
 - Loop
 - Many others
 - Differ in ...
 - Input topology
 - How refine topology
 - How refine geometry
- ... which makes differences in ...
- Provable properties

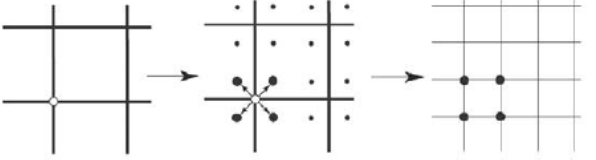




Subdivision Schemes

- Other subdivision schemes

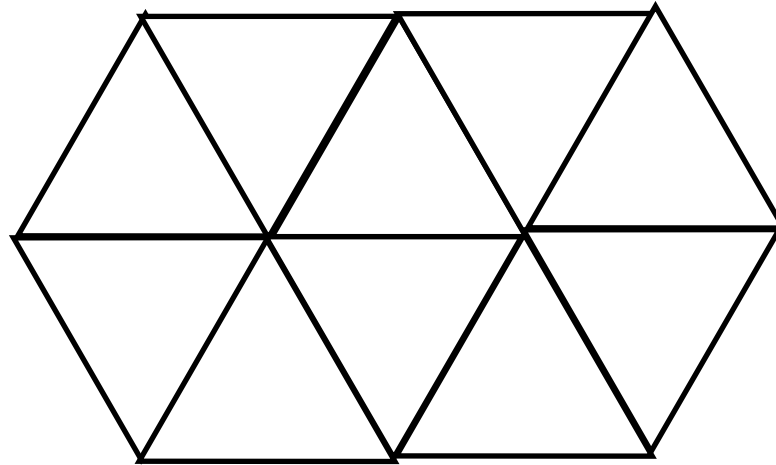
Primal (face split)		
	 <i>Triangular meshes</i>	 <i>Quad Meshes</i>
<i>Approximating</i>	Loop(C^2)	Catmull-Clark(C^2)
<i>Interpolating</i>	Mod. Butterfly (C^1)	Kobbelt (C^1)

 Dual (vertex split)
Doo-Sabin, Midedge(C^1)
Biquartic (C^2)

Other Subdivision Schemes



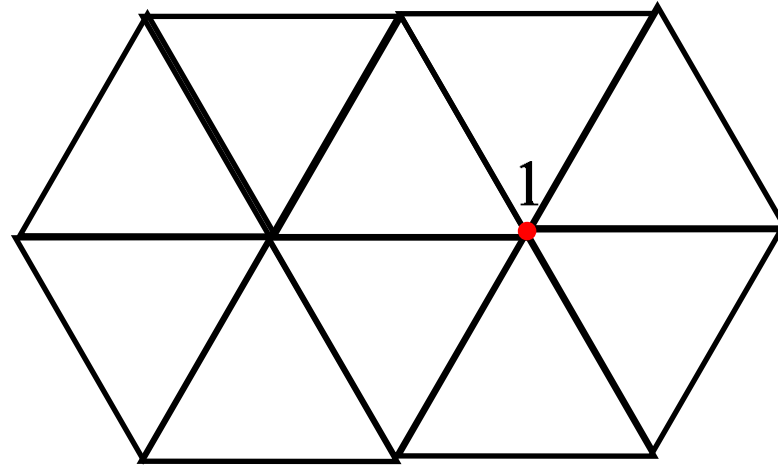
- Butterfly subdivision



Other Subdivision Schemes



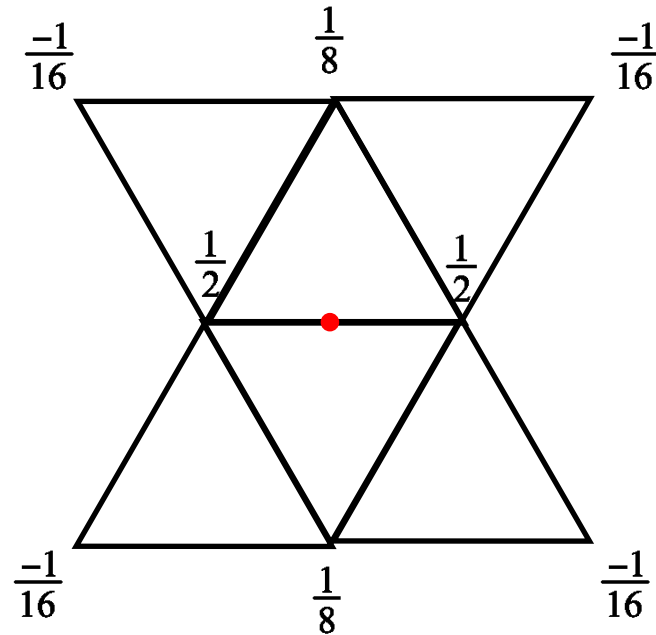
- Butterfly subdivision



Other Subdivision Schemes

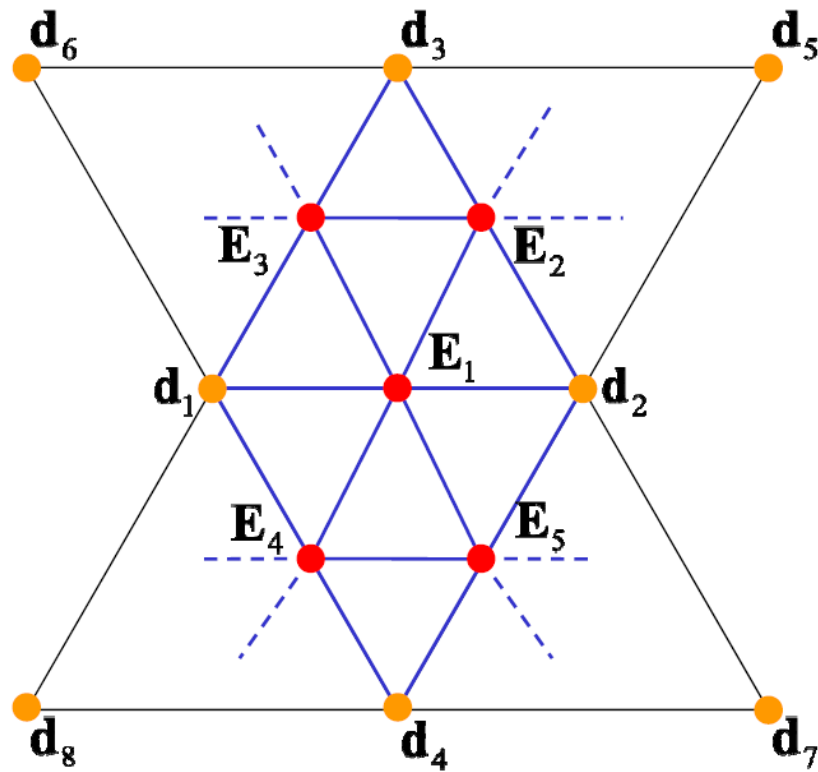


- Butterfly subdivision



Other Subdivision Schemes

- Butterfly subdivision



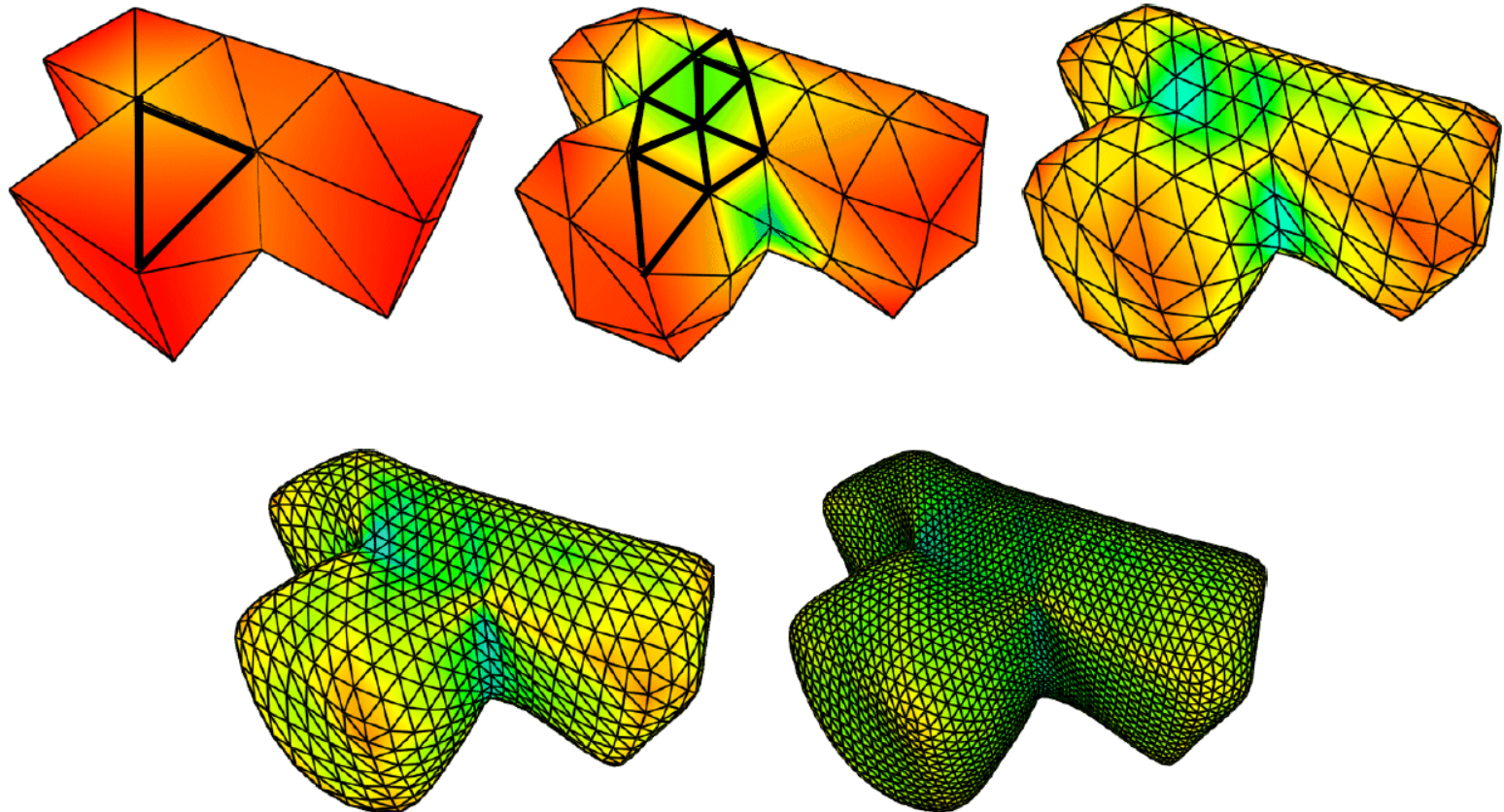
$$\mathbf{E}_1 = \frac{1}{2}(\mathbf{d}_1 + \mathbf{d}_2) + \omega(\mathbf{d}_3 + \mathbf{d}_4) - \frac{\omega}{2}(\mathbf{d}_5 + \mathbf{d}_6 + \mathbf{d}_7 + \mathbf{d}_8)$$

$$\mathbf{d}'_i = \mathbf{d}_i$$

Other Subdivision Schemes



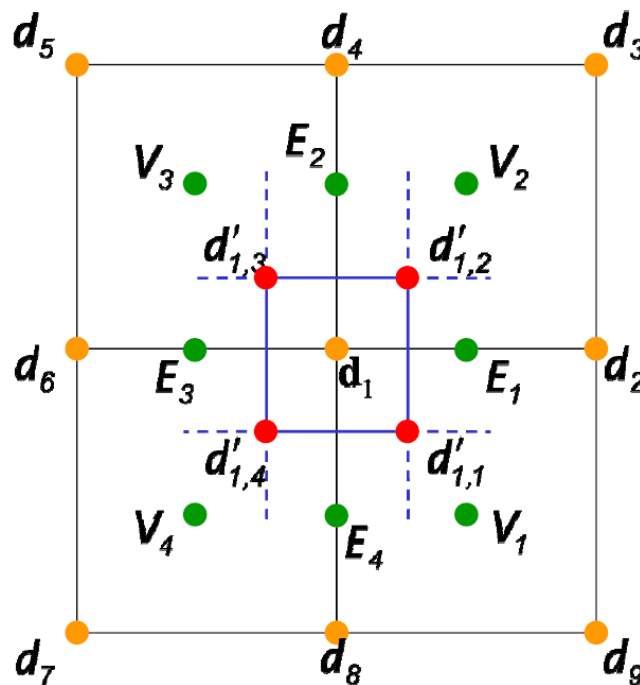
- Butterfly subdivision





Other Subdivision Schemes

- Vertex-split subdivision
(Doo-Sabin, Midedge, Biquartic)



$$V_2 = \frac{1}{n} \times \sum_{j=1}^n d_j$$

$$E_i = \frac{1}{2} (d_1 + d_{2i})$$

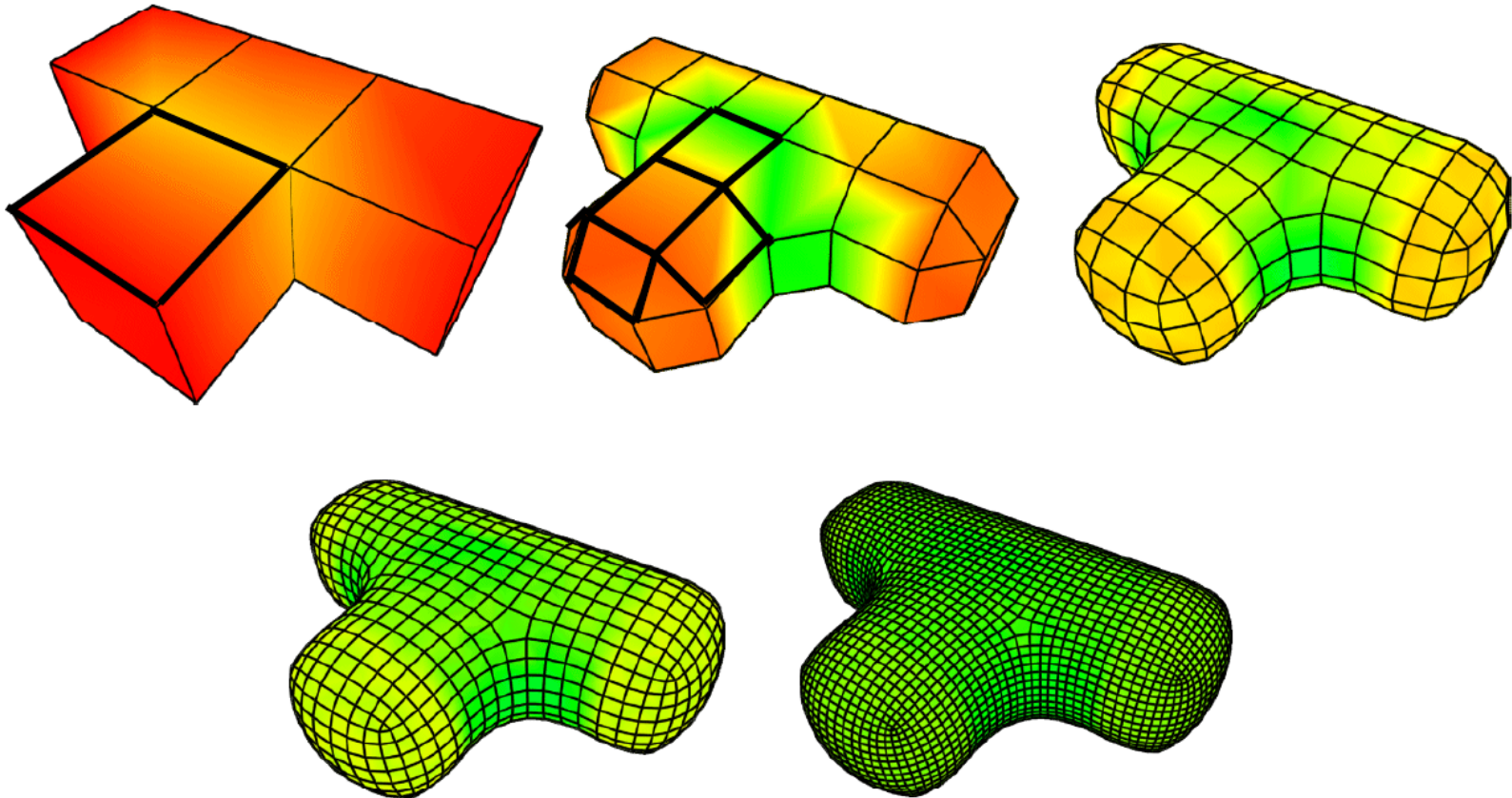
$$d'_{1,j} = \frac{1}{4} (d_1 + E_j + E_{j-1} + V_j)$$

One step of Doo-Sabin subdivision

Other Subdivision Schemes



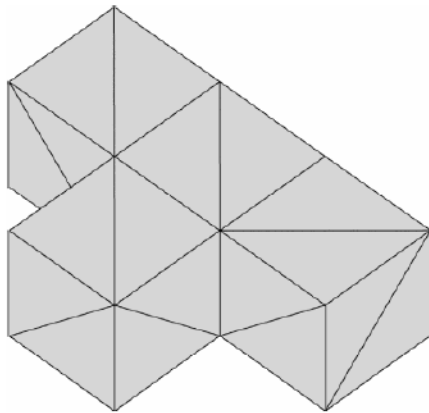
- Doo-Sabin Subidvision



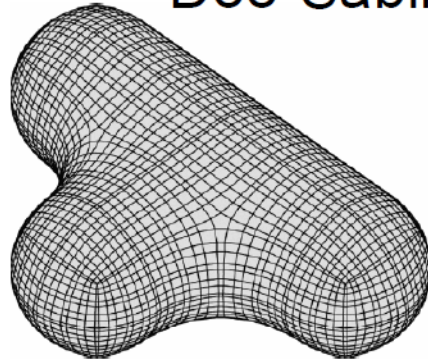


Other Subdivision Schemes

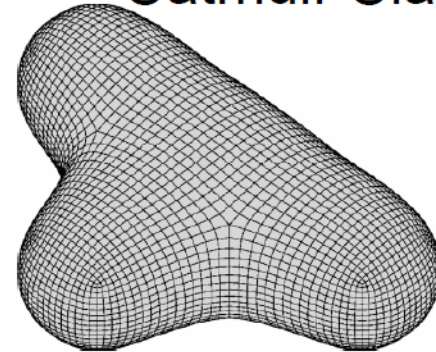
Comparison



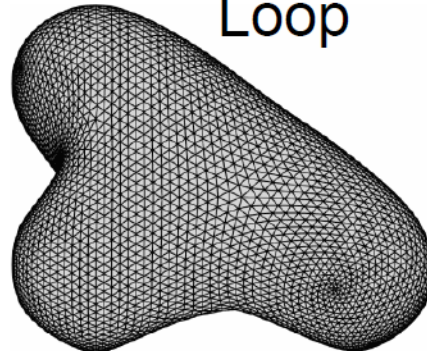
Doo-Sabin



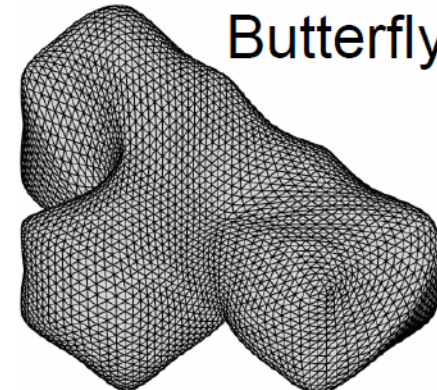
Catmull-Clark



Loop



Butterfly

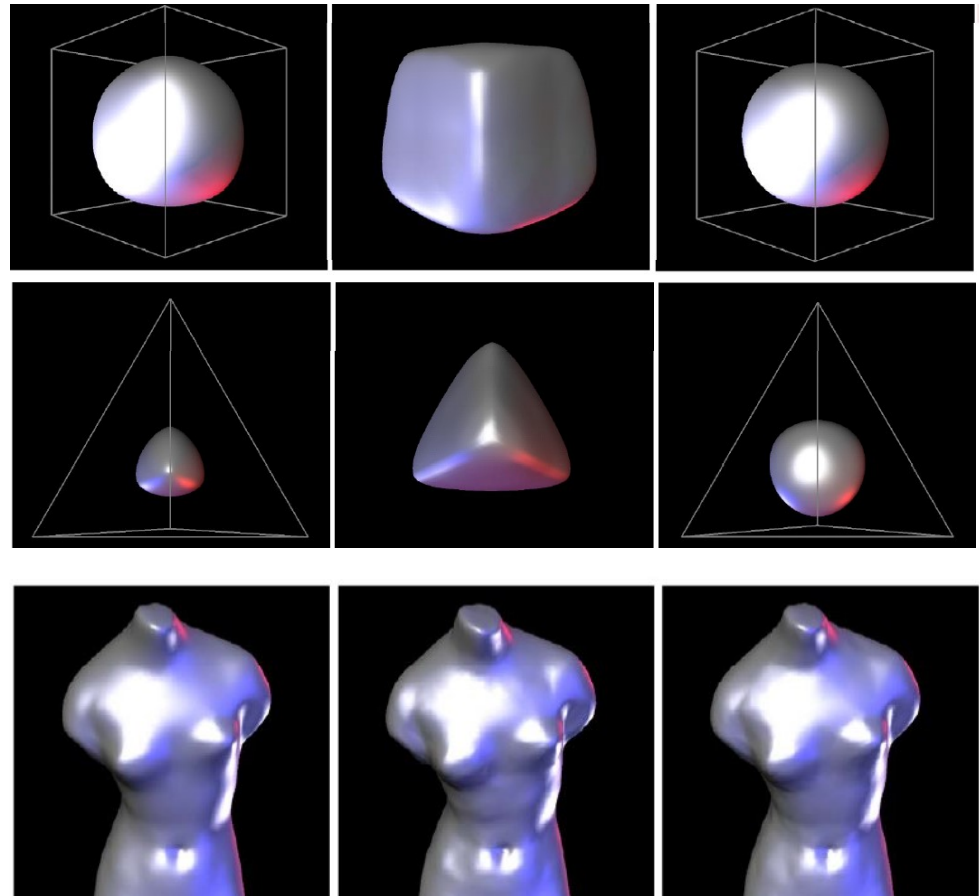


Meshlab demo



Other Subdivision Schemes

- Comparisons:
 - Interpolation vs. smoothness
 - Triangulation dependent asymmetry
 - Shrinking for approximating schemes
 - Similar for smooth meshes with uniform triangles



Loop

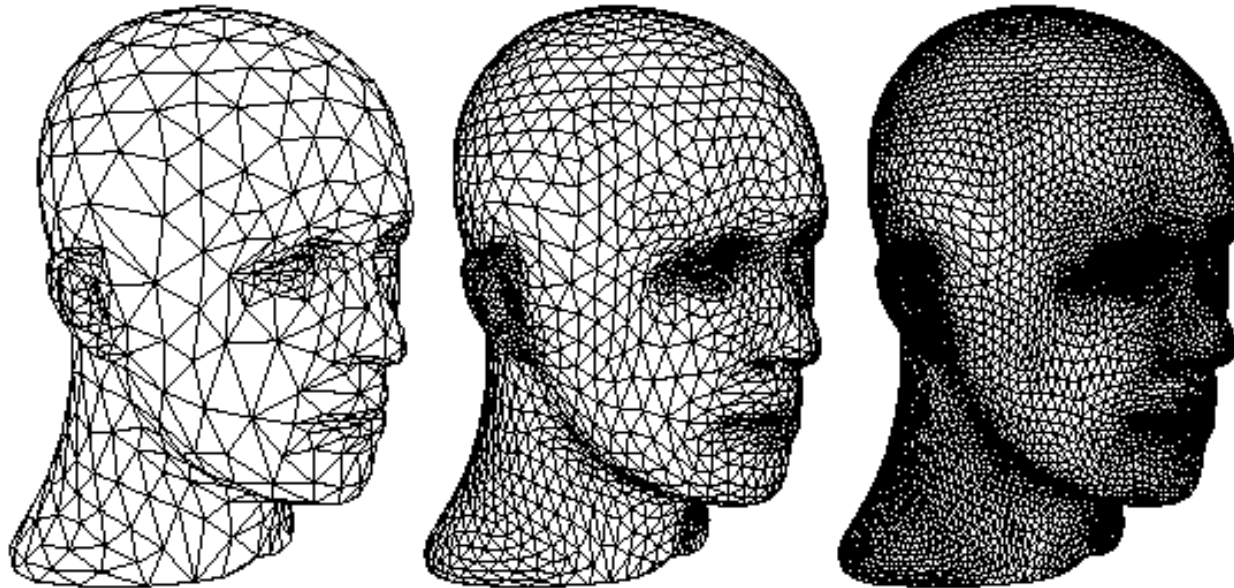
Butterfly

Catmull-Clark

Drawing Subdivision Surfaces



- Goal:
 - Draw best approximation of smooth limit surface
 - With limited triangle budget

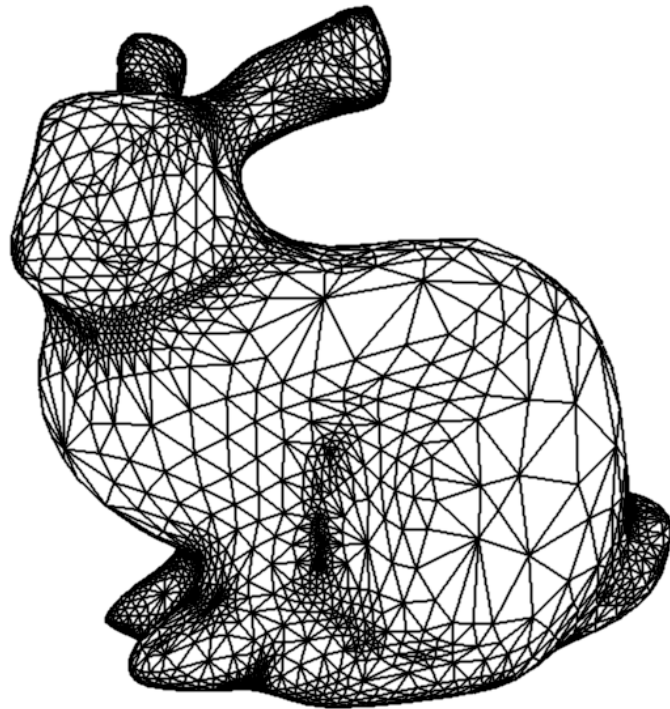




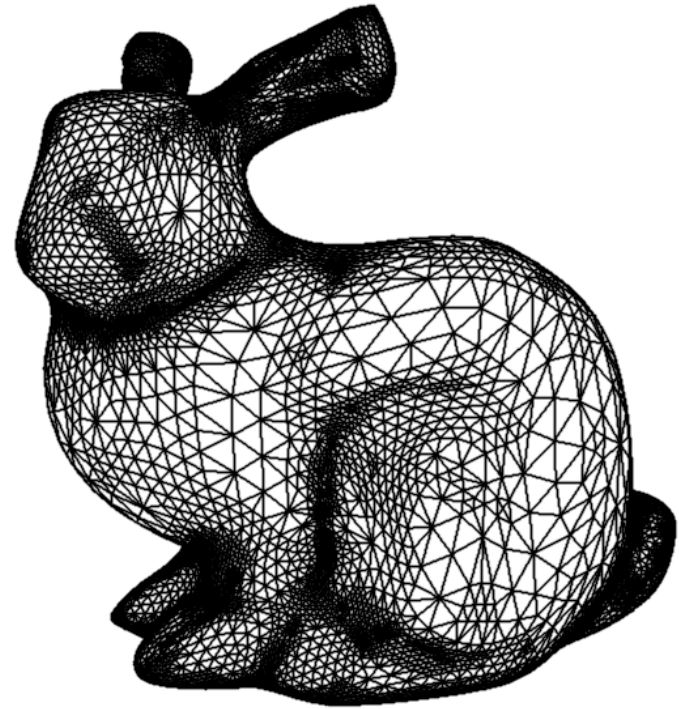
Drawing Subdivision Surfaces

- Goal:
 - Draw best approximation of smooth limit surface
 - With limited triangle budget
- Solution:
 - Stop subdivision at different levels across the surface
 - Stop-criterion depending on quality measure
- Quality of approximation can be defined by
 - Projected (screen) area of final triangles
 - Local surface curvature

Adaptive Subdivision



10072 Triangles



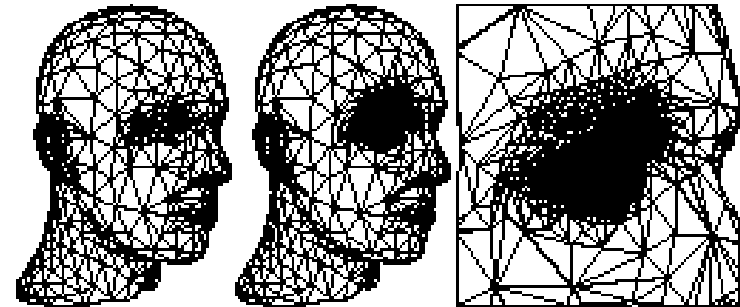
228654 Triangles

[Kobbelt 2000]

Subdivision Surface Summary



- Advantages:
 - Simple method for describing complex surfaces
 - Relatively easy to implement
 - Arbitrary topology
 - Intuitive specification
 - Local support
 - Guaranteed continuity
 - Multi-resolution



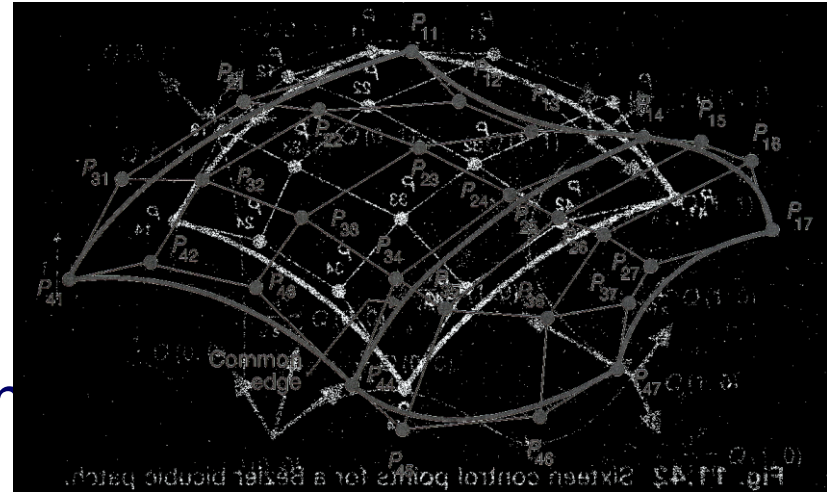
- Difficulties:
 - Parameterization
 - Intersections

Comparison



Parametric surfaces

- Provide parameterization
- More restriction on topology of control mesh
- Some require careful placement of control mesh vertices to guarantee continuity (e.g., Bezier)



Subdivision surfaces

- No parameterization
- Subdivision rules can be defined for arbitrary topologies
- Provable continuity for all placements of control mesh vertices

Comparison



Feature	Polygonal Mesh	Parametric Surface	Subdivision Surface
Accurate	No	Yes	Yes
Concise	No	Yes	Yes
Intuitive specification	No	Yes	Yes
Local support	Yes	Yes	Yes
Affine invariant	Yes	Yes	Yes
Arbitrary topology	Yes	No	Yes
Guaranteed continuity	No	Yes	Yes
Natural parameterization	No	Yes	No
Efficient display	Yes	Yes	Yes
Efficient intersections	No	No	No