

TIE Breaking: Tunable Interdomain Egress Selection

Renata Teixeira
UC San Diego
La Jolla, CA
teixeira@cs.ucsd.edu

Timothy G. Griffin
University of Cambridge
Cambridge, UK
Timothy.Griffin@cl.cam.ac.uk

Mauricio G. C. Resende
AT&T Labs–Research
Florham Park, NJ
mgcr@research.att.com

Jennifer Rexford
Princeton University
Princeton, NJ
jrex@cs.princeton.edu

Abstract—The separation of *intradomain* and *interdomain* routing has been a key feature of the Internet’s routing architecture from the early days of the ARPAnet. However, the appropriate “division of labor” between the two protocols becomes unclear when an Autonomous System (AS) has interdomain routes to a destination prefix through multiple border routers—a situation that is extremely common today because neighboring domains often connect in several locations. We believe that the current mechanism of *early-exit* or *hot-potato* routing—where each router in an AS directs traffic to the “closest” border router based on the intradomain path costs—is convoluted, restrictive, and sometimes quite disruptive. In this paper, we propose a flexible mechanism for routers to select the egress point for each destination prefix, allowing network administrators to satisfy diverse goals, such as traffic engineering and robustness to equipment failures. We present one example optimization problem that uses integer-programming techniques to tune our mechanism to improve network robustness. Experiments with topology and routing data from two backbone networks demonstrate that our solution is both simple (for the routers) and expressive (for the network administrators).

I. INTRODUCTION

The Internet’s two-tiered routing architecture was designed to have a clean separation between the intradomain and interdomain routing protocols. For example, the interdomain protocol allows the border routers to learn how to reach external destinations, whereas the intradomain protocol determines how to direct traffic from one router in the AS to another. However, the appropriate roles of the two protocols becomes unclear when the AS learns routes to a destination at multiple border routers—a situation that arises quite often today. Since service providers peer at multiple locations, essentially *all* of the traffic from customers to the rest of the Internet has multiple egress routers. In addition, many customers connect to their provider in multiple locations for fault tolerance and more flexible load balancing, resulting in multiple egress routers for these destinations as well. Selecting among multiple egress points is now a fundamental part of the Internet routing architecture, independent of the current set of routing protocols.

In the Internet today, border routers learn routes to destination prefixes via the Border Gateway Protocol (BGP). When multiple border routers have routes that are “equally good” in the BGP sense (e.g., local preference, AS path length, etc.), each router in the AS directs traffic to the *closest* border router, in terms of Interior Gateway Protocol (IGP) distances. This policy of *early-exit* or *hot-potato* routing is hard-coded in the BGP decision process implemented on each router [1]. Hot-potato routing allows a router to implement a simple decision

rule, independently of the other routers, while ensuring that packets are forwarded to neighboring routers that have selected the same (closest) egress point. In addition, hot-potato routing tends to limit the consumption of bandwidth resources in the network by shuttling traffic to the next AS as early as possible.

We believe that the decision to select egress points based on IGP distances should be revisited, in light of the growing pressure to provide good, predictable communication performance for applications such as voice-over-IP, online gaming, and business transactions. We argue that hot-potato routing is:

- **Too restrictive:** The underlying mechanism dictates a particular policy rather than supporting the diverse performance objectives important to network administrators.
- **Too disruptive:** Small changes in IGP distances can sometimes lead to large shifts in traffic, long convergence delays, and BGP updates to neighboring domains [2, 3].
- **Too convoluted:** Network administrators are forced to select IGP metrics that make “BGP sense,” rather than viewing the two parts of the routing system separately.

Selecting the egress point and computing the forwarding path to the egress point are two very distinct functions, and we believe that they should be decoupled. Paths inside the network should be selected based on some meaningful performance objective, whereas the egress selection should be flexible to support a broader set of traffic-engineering goals. These objectives vary by network and destination prefix; therefore a mechanism that imposes a single egress selection policy cannot satisfy these diverse set of requirements.

In this paper, we propose a new mechanism for each router to select an egress point for a destination, by comparing the candidate egress points based on a weighted sum of the IGP distance and a constant term. The configurable weights provide flexibility in deciding whether (and how much) to base BGP decisions on the IGP metrics. Network management systems can apply optimization techniques to automatically set these weights to satisfy network-level objectives, such as balancing load and minimizing propagation delays. To ensure consistent forwarding through the network, we advocate the use of lightweight tunnels to direct traffic from the ingress router to the chosen egress point. Our new mechanism, called TIE (Tunable Interdomain Egress) because it controls how routers break ties between multiple equally-good BGP routes, is both simple (for the routers) and expressive (for the network administrators). Our solution does not introduce any new protocols or any changes to today’s routing protocols, making it possible to deploy our ideas at one AS at a time and with

only minimal changes to the BGP decision logic on IP routers. The paper makes the following research contributions:

- **Flexible mechanism for egress-point selection:** TIE is: (i) flexible in balancing the trade-off between sensitivity to IGP changes and adaptability to network events, (ii) computationally easy for the routers to execute in real time, and (iii) easy for a management system to optimize based on diverse network objectives.
- **Optimization of network-wide objectives:** We present an example problem that can be solved easily using TIE. We show how to minimize sensitivity to internal topology changes, subject to a bound on propagation delay, using integer programming to set the weights in our mechanism.
- **Evaluation on two backbone networks:** We evaluate the effectiveness of TIE for this optimization problem, using topology and routing data from two backbone networks (i.e., Abilene and a large ISP). Our experiments show that TIE reduces sensitivity to internal topology changes while satisfying network-wide objectives for delay.

In the next section, we discuss the problems caused by hot-potato routing, and describe an alternative where each router has a fixed ranking of the egress points. Then, Section III presents the TIE mechanism for selecting egress points, along with several simple examples. Section IV presents the optimization problem and evaluates our solution on topology and routing data from two backbone networks. Section V briefly discusses how to use TIE to balance load in the network. In Section VI, we discuss how to limit the number of configurable parameters and how to deploy TIE without changing the existing routing protocols. After a brief overview of related work in Section VII, we conclude the paper in Section VIII. An Appendix describes how we determine the network topology and egress sets from the measurement data collected from the two backbone networks.

II. CRITIQUE OF TODAY’S IGP/BGP BOUNDARY

The Internet routing system has three main components: (i) interdomain routing, which determines the set of border (or *egress*) routers that direct traffic toward a destination, (ii) intradomain routing, which determines the path from an ingress router to an egress router, and (iii) egress-point selection, which determines which egress router is chosen by each ingress router for each destination. In this section, we first describe how tying egress selection to IGP distances leads to harmful disruptions and over-constrained traffic-engineering problems. Then we explain how the alternative of allowing each ingress router to have a fixed ranking of egress points is not flexible enough (for traffic engineering) or adaptive enough (to large changes in the network topology).

Our discussion of the two approaches draws on the example network in Figure 1. AS 1 has five routers (A , B , C , D , and E) and each internal link has an IGP metric. Routers A and B are both egress points for destination prefix p , because they learn routes to p via *external* BGP (eBGP). Each of

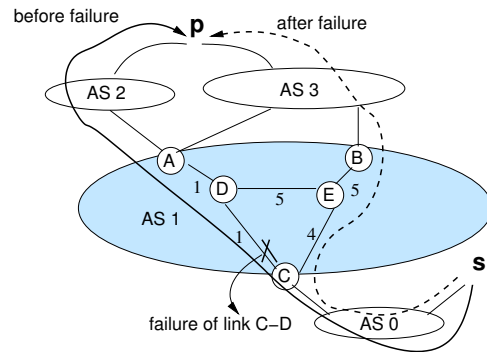


Fig. 1. Link failure causes router C to switch egress points from A to B

them selects a best route¹, and propagates it via *internal* BGP (iBGP) to routers inside the AS. Routers A and B propagate their best route to p to router C . Under hot-potato routing, router C chooses the BGP route learned from A because the IGP distance to A is 2, which is smaller than the distance of 9 to B . However, if the C - D link fails, all traffic from C to p would shift to egress router B , with an IGP distance of 9 that is smaller than the new IGP distance of 10 to A . In this section, we argue that these kinds of routing changes are disruptive. Yet, continuing to use egress-point A might not be the right thing to do, either, depending on the propagation delay, traffic demands, and link capacities. Instead, network administrators need a mechanism that is flexible enough to support sound performance trade-offs.

A. Hot-Potato Routing

Hot-potato routing adapts automatically to topology changes that affect the relative distances to the egress points. Although hot-potato routing seems like a reasonable way to minimize resource consumption, IGP link weights do not express resource usage directly. The IGP distances do not necessarily have any relationship to hop count, propagation delay, or link capacity, and selecting the closer egress point does not necessarily improve network performance. In addition, small topology changes can lead to performance disruptions:

- **Large shifts in traffic within and between ASes:** A single link failure can affect the egress-point selection for tens of thousands of destinations at the same time, leading to large shifts in traffic [2]. In fact, hot-potato routing changes are responsible for many of the largest traffic variations in a large backbone [3].
- **Changes in the downstream path:** When the egress point changes, the traffic moves to a different downstream forwarding path that may have a different round-trip time or available bandwidth, which may disrupt the communicating applications. In addition, the abrupt increase in traffic entering the neighboring AS may cause congestion.
- **BGP update messages for neighboring domains:** A change in egress point may also change the AS path. If

¹ A has the choice between the route through AS 2 and AS 3. In this example, we assume that the two routes are equivalent when comparing BGP attributes, so A decides which route to pick based on a tie break such as the age of the route or the router ID.

A selects the route via AS 2 in Figure 1, the failure of the C - D link causes router C to switch from a path through AS 2 to one through AS 3, forcing C to send a BGP update message to AS 0. Global BGP convergence may take several minutes [4]. If AS 0 switches to a BGP route announced by another provider, the traffic entering AS 1 at router C would change.

Even if the hot-potato routing change does not lead to new BGP update messages, long convergence delays can occur inside the AS depending on how the router implements the BGP decision process. An earlier measurement study [2] discovered long convergence delays because the underlying routers in the network only revisited the influence of IGP distances on BGP decisions once per minute; during the convergence period, data packets may be lost, delayed, or delivered out of order. This particular problem, while serious, can be addressed by having routers use an event-driven implementation that immediately revisits the BGP routing decisions after a change in the intradomain topology. In contrast, the three problems listed above are fundamental.

In a large network, IGP changes that affect multiple destination prefixes happen several times a day, sometimes leading to very large shifts in traffic [3]. Not all of these events are caused by unexpected equipment failures—a large fraction of them are caused by planned events, such as routine maintenance². A recent study of the Sprint backbone showed that almost half of IGP events happened during the maintenance window [5]. Often, shifts in egress points are not necessary. The new intradomain path to the old egress point, although a little longer IGP-wise, may offer comparable (or even better) performance than the path to the new egress point. Following the failure of the C - D link in Figure 1, the path C, E, D, A might be less congested or have lower propagation delay than the path C, E, B . Moreover, many internal network changes are short-lived; a study of the Sprint backbone showed that 96% of failures were repaired in less than 15 minutes [5]. Maintenance activities are often done in periods of lower traffic demands, when the network would comfortably have extra capacity to tolerate the temporary use of non-closest egress points.

Besides being disruptive, the tight coupling between egress selection and IGP metrics makes traffic engineering and maintenance planning extremely difficult. Network administrators *indirectly* control the flow of traffic by tuning the IGP metrics [6–11] and BGP policies [12, 13]. Finding good settings that result in the desired behavior is computationally challenging, due to the large search space and the need to model the effects on egress-point selection. Finding settings that are robust to a range of possible equipment failures is even more difficult [14–16]. Imposing even more constraints, such as minimizing egress-point changes across all routers and destination prefixes, makes the problem increasingly untenable. In addition, once the local search identifies a better setting of the IGP metrics or BGP policies, changing these parameters in the routers requires the network to go through routing-protocol

convergence, leading to transient performance disruptions.

B. Fixed Ranking of Egress Points at Each Ingress Router

A natural alternative would be to configure each router with a fixed ranking of the egress points, where the router would select the highest-ranked element in the set of egress routers for each destination. This solution can be realized using today’s technology by establishing a tunnel from each ingress router to each egress router, and assigning an IGP metric to the tunnel³. The data packets would follow the shortest underlying IGP path from the ingress router to the chosen egress router. The hot-potato mechanism would still dictate the selection of egress points, but the metric associated with each tunnel would be defined statically at configuration time rather than automatically computed by the IGP. Thus, this technique allows network administrators to rank the egress points from each router’s perspective, allowing each ingress router to select the highest-ranked egress point independent of internal network events, short of the extreme case where the egress point becomes unreachable and the router is forced to switch to the egress point with the next highest rank.

For the example in Figure 1, router C could be configured to prefer egress A over B . Then, when the C - D link fails, C would continue to direct traffic toward router A , though now using the path C, E, D, A . This would avoid triggering the traffic shift to B , changes in the downstream forwarding path, and BGP updates to neighboring domains. However, although the fixed ranking is extremely robust to internal changes, sometimes switching to a different egress point is a good idea. For example, the path C, E, D, A may have limited bandwidth or a long propagation delay, making it more attractive to switch to egress-point B , even at the expense of causing a transient disruption. In the long term, network administrators could conceivably change the configuration of the ranking to force the traffic to move to a new egress point, but the reaction would not be immediate. Similarly, the administrators could reconfigure the IGP metrics or BGP policies to redistribute the traffic load, at the expense of searching for a suitable solution, reconfiguring the routers, and waiting for the routing protocol to converge. All these approaches react too slowly to network changes.

The mechanisms available today for selecting egress points represent two extremes in the trade-off between robustness and automatic adaptation. Hot-potato routing adapts immediately to internal routing changes (however small), leading to frequent disruptions. Imposing a fixed ranking of egress points, while robust to topology changes, cannot adapt in real time to critical events. Neither mechanism offers sufficient control for network administrators trying to engineer the flow of traffic and plan for maintenance. In this paper, we ask a natural question: *Is there a mechanism for egress-point selection that is flexible enough to control the flow of traffic in steady state,*

²Maintenance activities happen very frequently to upgrade the operating system on the routers, replace line cards, or repair optical amplifiers. In addition, construction activities may require moving fibers or temporarily disabling certain links.

³For example, network administrators can use MPLS [17, 18] to create label-switched paths (LSPs) between all ingress-egress pairs. Configuring each LSP as an IGP *virtual link* ensures that each tunnel appears in the intradomain routing protocol. The metric assigned to the tunnel would then drive the hot-potato routing decision hard-coded in the routers.

while responding automatically to network events that would degrade performance?

III. TIE: TUNABLE INTERDOMAIN EGRESS SELECTION

In this section, we propose a mechanism for selecting an egress point for each ingress router and destination prefix in a network. Ideally, an optimization routine could compute the egress points directly based on the current topology, egress sets, and traffic, subject to a network-wide performance objective. However, the routers must adapt in real time to events such as changes in the underlying topology and egress sets, leading us to design a simple mechanism that allows a separation of timescales—enabling both rapid adaptation to unforeseen events and longer-term optimization of network-wide objectives. In addition, the design of our mechanism places an emphasis on generality to allow us to support a wide variety of network objectives, rather than tailoring our solution to one particular scenario. In this section, we first describe our simple mechanism and then present several examples of how to set the configurable parameters to manage a simple network.

A. TIE Ranking Metric

Our mechanism allows each router to have a ranking of the egress points for each destination prefix. That is, router i has a metric $m(i, p, e)$, across all prefixes p and egress points e . For each prefix, the router considers the set of possible egress points and selects the one with the smallest rank, and then forwards packets over the shortest path through the network to that egress point. Our approach differs from the scheme in Section II-B in several key ways. First, our ranking metric has *finer granularity*, in that we allow an ingress router to have a different ranking for different destination prefixes. Second, our ranking metric is computed rather than statically configured, allowing the ranking to *adapt to changes* in the network topology and egress set. Third, our metric is *not tied directly to the underlying tunnel* that directs traffic from an ingress point to the chosen egress point, allowing us to achieve the finer granularity of control without increasing the number of tunnels. Our approach is also more flexible than tuning BGP routing policies, in that one router can start using a new egress point while other routers continue to use the old one.

Undirected graph	$G = (N, L)$, nodes N and links L
Ingress and egress nodes	$i \in N$ and $e \in N$
IGP distance on graph	$d(G, i, e)$, $i, e \in N$
Destination prefix	$p \in P$
Egress set	$E(p) \subseteq N$
Ranking metric	$m(i, p, e)$, $i, e \in N$, $p \in P$
Tunable parameters	$\alpha(i, p, e)$ and $\beta(i, p, e)$

TABLE I
SUMMARY OF NOTATION.

To support flexible policy while adapting automatically to network changes, the metric $m(i, p, e)$ must include both configurable parameters and values computed directly from a real-time view of the topology. We represent intradomain

routing topology as an undirected weighted graph $G = (N, L)$, where N is the set of nodes and L is the set of IP links, as summarized in Table I. Based on the link weights, each router $i \in N$ can compute the IGP distance $d(G, i, e)$ to every other router $e \in N$. The egress set $E(p) \subseteq N$ consists of the edge nodes that have equally-good BGP routes for prefix p . For prefix p , node i selects the egress point $\operatorname{argmin}_e \{m(i, p, e) \mid e \in E(p)\}$. The metric is computed as a weighted sum of the IGP distance and a constant term:

$$m(i, p, e) = \alpha(i, p, e) \cdot d(G, i, e) + \beta(i, p, e),$$

where α and β are configurable values. The first component of the equation supports automatic adaptation to topology changes, whereas the second represents a static ranking of routes for that prefix. Together, these two parameters can balance the trade-off between adaptability and robustness. This simple metric satisfies our three main goals:

- **Flexible policies:** By tuning the values of α and β , network administrators can cover the entire spectrum of egress-selection policies from hot-potato routing to static rankings of egress points. Hot-potato routing can be implemented by setting $\alpha = 1$ and $\beta = 0$ for all nodes and prefixes. A static ranking can be represented by setting $\alpha = 0$ and, for each node i , $\beta(i, p, e)$ to a constant value for all values of p . Our mechanism can also realize a diverse set of policies in between.
- **Simple computation:** The metric is computationally simple—one multiplication and one addition—based on information readily available to the routers (i.e., the IGP distances and the α and β values). This allows routers to compute the appropriate egress point for all destination prefixes immediately after a change in the network topology or egress set.
- **Ease of optimization:** The mechanism offers two knobs (α and β) that can be easily optimized by a management system based on diverse network objectives. In Sections IV and V, we explore the power of this mechanism to express a wide range of policies, and we demonstrate that it is easy to optimize by showing that the optimization problems we define are tractable.

In addition, when the network-management system changes the α and β values, the affected routers can move traffic from one path to another without incurring any convergence delays. This is possible because the network already has forwarding paths between each pair of routers. Changing the α and β values merely changes which paths carry the traffic.

B. Example Configurations

For each router i and prefix p , network administrators need to configure the values of α and β . By configuring the egress-selection parameters on a per prefix basis, an AS can satisfy diverse policy goals. We now explore a few examples:

Voice-over-IP: For instance, suppose that a prefix p is used for VoIP and that network administrators set IGP link weights according to propagation delay. Voice applications are sensitive to both high delays and the transient disruptions that occur during egress-point changes. Imagine that the network learns

p at two egress points e_1 and e_2 , and that the IGP distance at design time from a router i to each egress is $d(G, i, e_1) = 20$ and $d(G, i, e_2) = 30$. In the designed topology, i should prefer e_1 to forward packets to p to minimize delay. If the cost to reach e_1 increases a little, i should still use e_1 in order to avoid disruptions associated with the egress change. However, when the IGP distance to e_1 exceeds 50, the network administrators want i to select the closest egress.

This application needs an egress-selection policy that is between hot-potato routing and a fixed ranking. At design time, the value of $m(i, p, e_1) = 20 \cdot \alpha(i, p, e_1) + \beta(i, p, e_1)$ and $m(i, p, e_2) = 30 \cdot \alpha(i, p, e_2) + \beta(i, p, e_2)$. Since i prefers e_1 , we need to have $m(i, p, e_1) < m(i, p, e_2)$; however, when $d(G, i, e_1)$ exceeds 50, we need to have $m(i, p, e_1) < m(i, p, e_2)$. We can express these constraints with the following equations:

$$\begin{aligned} 20 \cdot \alpha(i, p, e_1) + \beta(i, p, e_1) &< 30 \cdot \alpha(i, p, e_2) + \beta(i, p, e_2) \\ 50 \cdot \alpha(i, p, e_1) + \beta(i, p, e_1) &< 30 \cdot \alpha(i, p, e_2) + \beta(i, p, e_2) \\ 51 \cdot \alpha(i, p, e_1) + \beta(i, p, e_1) &> 30 \cdot \alpha(i, p, e_2) + \beta(i, p, e_2) \end{aligned}$$

We can now select the values of α and β that satisfy these constraints. For instance, if we set both $\beta(i, p, e_1) = \beta(i, p, e_2) = 0$ and $\alpha(i, p, e_1) = 10$, then we find that $\alpha(i, p, e_2) = 17$.

Large file transfer: Take now the example of two research labs that continuously exchange large data files. Suppose that each research lab has an ISP and that the two providers peer in two locations. Both the source and the destination ISPs need to provision enough bandwidth for these large transfers. To provision for the file transfers, both ISPs need to know both the ingress and egress points for the data. In this case, the egress selection needs to be stable. Say that the source and destination ISPs agree that e_1 should be responsible for carrying this traffic. Then, for each router i we set $\alpha(i, p, e_1) = \alpha(i, p, e_2) = 0$ and $\beta(i, p, e_1) = 1$ and $\beta(i, p, e_2) = 2$.

The setting of α and β can be done independently for each pair (i, p) , which leads to a large number of parameters that need to be set at each router. We discuss our approach for configuring TIE next.

C. Using TIE

We do not envision that network administrators will configure all values of α and β by hand. Instead, we propose an architecture as presented in Figure 2. The upper box represents the tasks of a management system that runs independent of routers, and the lower box captures the tasks at each router in the network. Network administrators define the high-level goal of the egress-selection policy for the network or for a set of destination prefixes (such as minimize sensitivity to failures or traffic engineering). The management system takes as input the current network design and the administrator’s specifications, runs an optimization problem to find the appropriate values for the parameters α and β , and configures the routers accordingly. Once the management system configures the TIE parameters, the routers apply the BGP decision process as usual, except for using the metric m to select between multiple equally-good BGP routes.

With TIE the egress-point selection can change for two reasons: high-level policy changes (expressed by changes in

α and β) or routing changes. Policy changes happen because of changes in network objectives or the network design. Routing changes happen in response to network events such as link failures or BGP updates from neighboring domains. Reaction to routing changes must be done in real time to avoid bad network performance, whereas policy changes happen in longer time scales.

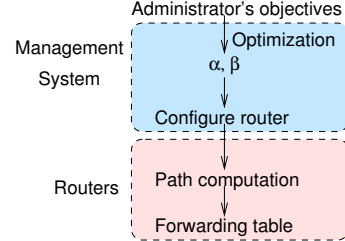


Fig. 2. A management system optimizes α and β for a high-level policy and configure routers. Routing adapts the egress-point selection at real time in reaction to network events.

In the next two sections we give examples of two high-level goals of network administrators. For the first of them, we present a management system that selects suitable values of α and β . Then, Section VI addresses implementation issues for deploying TIE. In particular, we discuss techniques for reducing the number of parameters that need to be configured in practice and the use of tunnels to allow independent egress-point selection to be made at each router.

IV. MINIMIZING SENSITIVITY TO EQUIPMENT FAILURES WITH BOUNDED DELAY

In this section, we present a prototype of a management system to select values of α and β to minimize the sensitivity of egress-point selection to equipment failures, subject to restrictions on increasing the propagation delay. After presenting a precise formulation of the problem, we present a solution that has two phases—simulating the effects of equipment failures to determine the constraints on the α and β values and applying integer-programming techniques to identify optimal settings. Then, we evaluate the resulting solution using topology and routing data from two backbone networks.

A. Problem Definition: Minimizing Sensitivity

Consider a well-provisioned backbone network that supports interactive applications, such as voice-over-IP and online gaming. The network administrators want to avoid the transient disruptions that would arise when an internal failure causes a change in the egress point for reaching a destination, as long as continuing to use the old egress point would not incur large delays. By setting the IGP link weights according to geographic distance, the shortest IGP path between two nodes would correspond to the smallest delay and the closest egress point would be the best choice. Hence, for this problem, the best egress point $b(G, i, p)$ for node i and prefix p is the node $e \in E(p)$ with the smallest IGP distance $d(G, i, e)$. If an internal failure occurs, the administrators want node i to continue directing traffic to $b(G, i, p)$ unless the delay to this

egress point exceeds $T \cdot d(G, i, b(G, i, p))$ for some threshold $T > 1$. If the delay to reach the egress point exceeds the threshold, the administrators want node i to switch to using the (new) closest egress point to minimize the propagation delay. Table II summarizes the notation.

Threshold for tolerable delay ratio	T
Set of topology changes	ΔG
Topology change	$\delta \in \Delta G$
Network topology after change	$\delta(G)$
Best egress point for (i, p) on G	$b(G, i, p)$

TABLE II

NOTATION FOR THE PROBLEM OF MINIMIZING SENSITIVITY TO TOPOLOGY CHANGES WITH BOUNDED DELAY.

In an ideal world, the routers could be programmed to implement this policy directly. For example, upon each IGP topology change δ , each node i could revisit its egress selection for each prefix by performing a simple test for the new topology $\delta(G)$:

if $(d(\delta(G), i, b(G, i, p)) \leq T \cdot d(G, i, b(G, i, p)))$,
 then $b(\delta(G), i, p) = b(G, i, p)$
 else $b(\delta(G), i, p) = \operatorname{argmin}_e \{d(\delta(G), i, e) \mid e \in E(p)\}$.

Modifying every router in the network to implement this egress-selection policy would guarantee that the network always behaves according to the specified goal. However, supporting a wide variety of decision rules directly in the routers would be extremely complicated, and ultimately network administrators would want to apply a policy that is not supported in the routers. In the next subsection, we show that TIE is expressive enough to implement this policy. Instead of having the routers apply the test in real time, the network-management system configures the TIE parameters at design time based on the policy, and the routers adapt automatically when internal changes occur.

B. Solving the Sensitivity Problem with TIE

Solving the problem with our mechanism requires us to find values of $\alpha(i, p, e)$ and $\beta(i, p, e)$, for each $i, e \in N$ and $p \in P$, that lead to the desired egress-point selections over all topology changes ΔG . Our solution has two main steps. First, a *simulation phase* determines the desired egress selection both at design time (under graph G) and after each topology change (under graph $\delta(G)$). The output of this phase is a set of constraints on the α and β values for each (i, p) pair. Then, an *optimization phase* determines the values of α and β that satisfy these constraints. For this problem, the egress-point selection for each (i, p) pair can be made independently.

1) *Simulation Phase*: To illustrate how we construct the constraints on α and β for the initial topology G and each topology change δ , consider the example in Figure 3(a). In the initial topology, node A would select node B as the egress point because B is closer than C . We can express this by $m(A, p, B) < m(A, p, C)$ for topology G , as shown

by the first constraint in Figure 3(b). Then, we consider each topology change δ and determine the preferred egress selection with the policy in mind, where $T = 2$ and δ_1 is the failure of the link with cost 4 and δ_2 is the failure of the links with costs 4 and 6. In the new graph $\delta_1(G)$, A is closer to C (with a distance $d(\delta_1(G), A, C)$ of 5) than to B (with a distance $d(\delta_1(G), A, B)$ of 6). However, since $d(\delta_1(G), A, B) < 2 \cdot d(G, A, B)$, A should continue to select egress-point B . This decision is expressed by the second equation in Figure 3(b). We use the same methodology to evaluate the best egress selection after δ_2 . In this case, the distance from A to B is above the threshold, so A should switch to using egress-point C , as expressed by the third equation.

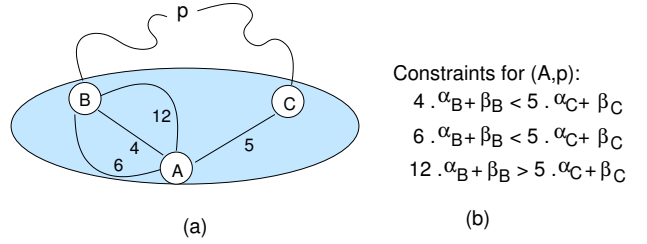


Fig. 3. Example illustrating constraints on values of α and β .

More generally, our algorithm consists of two main steps. First, we compute the distances $d(\cdot, i, e)$ for the original graph G and all topology changes $\delta \in \Delta G$ using an all-pairs shortest path algorithm. (For simple topology changes, such as all single-link failures, an incremental Dijkstra algorithm can reduce the overhead of computing the $|\Delta G| + 1$ instances of the all-pairs shortest paths.) Then, we generate the constraints for each (i, p) pair as presented in Figure 4.

- 1) Identify the closest egress point in the original graph: $b = \operatorname{argmin}_e \{d(G, i, e) \mid e \in E(p)\}$,
- 2) For each $e \in E(p) \setminus \{b\}$, generate the constraint “ $\alpha(i, p, b) \cdot d(G, i, b) + \beta(i, p, b) < \alpha(i, p, e) \cdot d(G, i, e) + \beta(i, p, e)$ ”
- 3) For each $\delta \in \Delta G$
 - a) Identify the preferred egress point b' : If $d(\delta(G), i, b) \leq T \cdot d(G, i, b)$, then $b' = b$. Else, $b' = \operatorname{argmin}_e \{d(\delta(G), i, e) \mid e \in E(p)\}$.
 - b) For each $e \in E(p) \setminus \{b'\}$, generate the constraint “ $\alpha(i, p, b') \cdot d(\delta(G), i, b') + \beta(i, p, b') < \alpha(i, p, e) \cdot d(\delta(G), i, e) + \beta(i, p, e)$ ”

Fig. 4. Algorithm of the simulation phase.

Step 2 runs once (on the original graph) and step 3(b) runs $|\Delta G|$ times (on each topology change), generating a constraint for each alternative to the desired egress point for that configuration. As a result, the algorithm produces $(|\Delta G| + 1) \cdot (|E(p)| - 1)$ constraints for each pair (i, p) . The size of $E(p)$ is limited by the number of edge nodes that have best BGP routes for a prefix; in practice, the size is usually one, two, or three, or at most ten. Fortunately, any prefixes that have the same egress set produce the same constraints, and the same values of α and β . The number of unique egress

sets is typically orders of magnitude less than the number of prefixes, which substantially reduces the running time of the algorithm. In order to reduce the complexity and number of configurable parameters, we group all routers in the same PoP into a single node; these routers typically make the same BGP routing decisions anyway, since they essentially act as one larger router. Ultimately, the running time of the algorithm is dominated by the number of topology changes in ΔG .

2) *Optimization Phase*: In the optimization phase, we compute α and β values that satisfy the constraints for each pair (i, p) . In theory, any settings that satisfy the constraints would achieve our optimization goal. However, several practical issues drive how we set up the optimization problem:

- **Finite-precision parameter values:** The α and β values should have finite precision to be configured and stored on the routers. Since the parameter values only have meaning relative to each other, we can limit ourselves to considering integer solutions. This leads us to apply *integer programming* to solve the problem.
- **Robustness to unplanned events:** Although we optimize the parameters based on the topology changes in ΔG , the real network might experience events outside of our model. If optimizing based on ΔG results in solutions with $\alpha = 0$ for an (i, p) pair, then router i would never adapt to a change in IGP distance, however large. To increase the robustness to unplanned events, we add an extra constraint that $\alpha(i, p, e) \geq 1$ for all i, p , and e .
- **Limiting the number of unique parameter values:** To reduce the overhead of configuring and storing the α and β parameters, we prefer solutions that reduce the number of unique values. As such, we attempt to minimize an objective function that is the sum across all of the α and β values, which favors solutions with $\alpha = 1$ and $\beta = 0$, selecting different values only when necessary to satisfy the constraints.

For each (i, p) pair, the simulation phase generates a set of linear inequalities and a linear objective function. Since we want our variables (α and β) to have integer values, we need to solve an integer-programming problem. We use the CPLEX [19] solver with AMPL to find the α and β values for each (i, p) pair. Although integer-programming problems are sometimes difficult to solve, our constraints are typically easy to satisfy because many constraints are identical or are subsumed by other constraints. For instance, the second constraint in Figure 3(b) is stricter than the first constraint (i.e., because $4\alpha_B < 6\alpha_B$). In fact, for most of the (i, p) pairs, CPLEX computes the values of α and β during a pre-processing phase that analyzes the constraints. Very few (i, p) pairs required more than three simplex iterations in the root node of the branch-and-bound tree to identify parameters that satisfy the constraints and minimize the objective function. Still, for arbitrary topologies and topology changes, we could conceivably encounter a scenario where no parameter setting would satisfy every constraint. A scenario like this, should it arise, could be handled by an extension to the integer program to minimize the *number* of constraints that are violated. This could be achieved by including an extra error term in each

constraint and selecting an objective function that minimizes the total error.

C. Evaluation

We evaluate the effectiveness of TIE for achieving our goal of minimizing sensitivity to equipment failures on the Abilene network and a tier-1 ISP backbone. We obtain the network topology G and the egress sets $\{E(p)\}$ as described in the Appendix. For this problem, we set the IGP link weights to the geographic distance between the PoPs to approximate the propagation delay. We optimize TIE for two sets of topology changes ΔG (single link failures and single node failures) and three different delay thresholds T (1.5, 2, and 3).

We ran the simulation and the optimization phases on different machines because the raw measurement data could only be stored on one machine, and the CPLEX license resides on another. The simulation phase ran on a 900MHz Ultrasparc-III Copper processor of a Sun Fire 15000. This phase consumed 3.2 MB of RAM and took 0.5 and 31.1 seconds to build the constraints for all pairs (i, p) for the Abilene and ISP networks, respectively. The optimization phase ran on a 196 MHz MIPS R10000 processor on an SGI Challenge. This phase consumed just under 4 MB of RAM and took 37 seconds and 12 minutes to run for the Abilene and ISP networks, respectively. The management system selects new α and β parameters very infrequently, and this selection does not delay the routers from picking routes. Thus, 12 minutes of running time is perfectly reasonable. In addition, we expect that the optimization phase would complete much faster if we invoke the CPLEX library directly from a C program rather than the AMPL interpreter.

In the resulting configuration for the Abilene network, α was equal to 1 for 93% of the (i, p, e) tuples and had only four distinct values ($\alpha \in [1, 4]$); β was zero for 90% of the (i, p, e) tuples and had only three distinct values ($\beta \in \{0, 1, 3251\}$). The ISP network has a much larger number of destination prefixes and distinct egress sets, which resulted in a broader range of values for the parameters ($\alpha \in [1, 19]$ and $\beta \in \{0, 1, 3411, 4960, 5185, 5009\}$). However, the vast majority of α values (88%) were equal to one, and 69% of β values were zero. The small number of distinct values for the parameters, and the large number of $\alpha(i, p, e) = 1$ and $\beta(i, p, e) = 0$, help reduce the overhead of configuring and storing the parameters, as discussed in more detail in Section VI. The fact that most (i, p) pairs have $\alpha(i, p, e) = 1$ and $\beta(i, p, e) = 0$ reveals that there are just a few points in the network that need some hysteresis to keep them from over-reacting to small IGP changes. TIE provides enough flexibility, so that our management system optimization routine can find which knobs to tweak to achieve the desired policy, but there is no need to tune all the knobs at the same time.

After generating the values of $\alpha(i, p, e)$ and $\beta(i, p, e)$ for each one of these scenarios, we simulate the behavior of each network with this configuration. For comparison, we also simulate the behavior of the network using hot-potato routing (by setting $\alpha(i, p, e) = 1$ and $\beta(i, p, e) = 0$ for all (i, p, e)), and the fixed ranking egress selection (by setting $\alpha(i, p, e) = 0$ for all (i, p, e) , and $\beta(i, p, e) = d(G, i, b(G, i, p))$). We

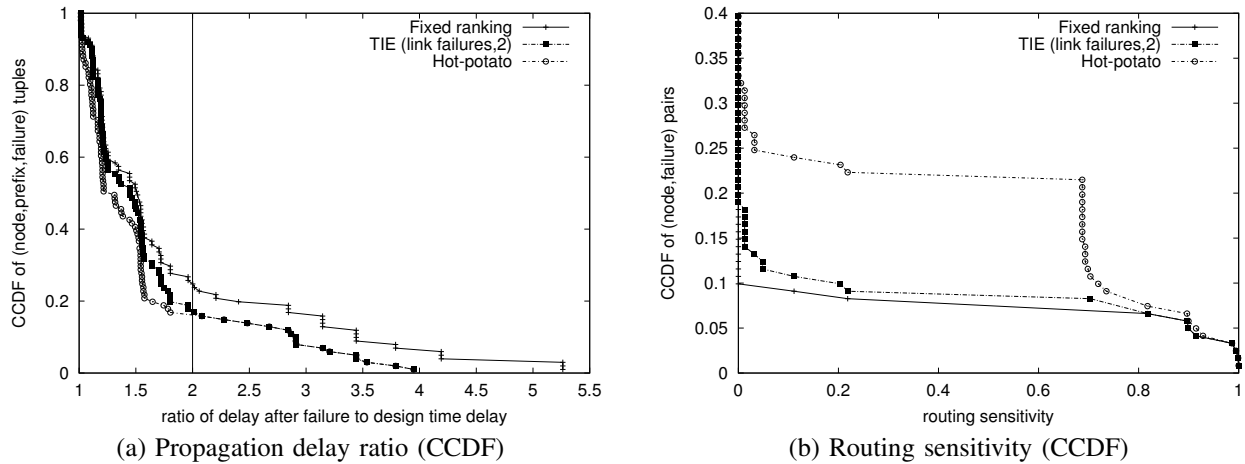


Fig. 5. Comparison of egress-selection schemes on the Abilene network under single-node failures with TIE optimized for single-link failures and $T = 2$.

simulate the behavior of these egress-selection policies under the set of all single-link failures and the set of all single-node failures. For conciseness, we only present the results for single-node failures, the results for the other instances lead to the same conclusions. We compare the three mechanisms using two metrics:

- **Delay ratio:** For each (i, p, δ) we compute the delay for i to reach the best egress point for p after the topology change δ ($d(\delta(G), i, b(\delta(G), i, p))$), and divide it by the delay to reach the best egress in the original topology ($d(G, i, b(G, i, p))$).
- **Routing sensitivity:** For each (i, δ) the routing sensitivity reprints the fraction of prefixes at i that change egress point after a topology change δ . This metric is the routing-shift function (\mathcal{H}^{RM}) defined in [20] and represents the fraction of a router’s BGP table that changes egress points after an intradomain routing change.

Figure 5(a) presents the complementary cumulative distribution function (CCDF) of the delay ratio for the Abilene network. A delay ratio equal to one means that the delay after the failure is the same as the delay in the original network. Many of the node failures do not affect the path between an ingress node and a best egress node for a prefix. Therefore, we omit all values that had a delay ratio of one. Given that the link weights are set according to geographic distance, the delay ratio achieved by hot-potato routing represents the smallest feasible delay ratio. Fixed ranking represents the delay to reach the old egress point after the failure. In this plot, we present the results for TIE optimized for single-link failures and $T = 2$, and evaluate the schemes against single-node failures. The results of TIE optimized for single-node failures were very similar (in fact most of the values of α and β were the same).

Despite being optimized for a different set of topology changes, TIE still behaves according to the original goal. TIE exceeds the delay threshold of 2 for only 20% of the (i, p, δ) , and hot-potato routing also exceeds the threshold in each of these cases. Fixing the ranking of egress points leads to delays that are higher than the delay achieved by TIE in the majority of instances. Whenever the fixed-ranking scheme lies below the threshold of 2, TIE is below it as well. When the fixed-

ranking scheme exceeds the threshold, TIE shifts to an egress point that is at or below the threshold. This is the reason why the TIE curve lies *below* the fixed-ranking curve for delay ratios under 2.

Below the threshold of 2, TIE has higher delay than hot-potato routing in exchange for lower sensitivity values as shown in Figure 5(b). This graph plots the CCDF of routing sensitivity for all (i, δ) pairs. Fixing the ranking of egress points has the lowest sensitivity. In fact, the fixed-ranking scheme has a non-zero sensitivity only when the best egress point fails, forcing even this scheme to change to the second-ranked egress point (i.e., the one that was second-closest at the initial topology). The TIE curve follows the fixed ranking for most points. TIE only experiences egress changes when they are unavoidable. The gap between the hot-potato and the TIE curve—around 15% of the (i, δ) pairs—represents the scenarios for which egress-selection disruptions could be avoided without violating the delay threshold.

Although we observe similar behavior in the results for the large ISP network (presented in Figures 6(a) and 6(b)), the gap between the curves is not as large as for the Abilene network. In this case, we optimize TIE for single-link failures with a delay threshold $T = 3$. The ISP network has many more choices of egress points per prefixes than the Abilene network. Therefore, the delay to reach the closest egress point in the original topology is likely to be very small, and setting the threshold to three times this delay still gives reasonably short delays. This network also has more path diversity than the Abilene network. In a more diverse graph, it is more likely that there is still a low-delay path to the initial egress point, even after the failure. Contrasting the delay ratio and routing sensitivity of the two networks illustrates that there is not a single policy that fits all networks. Compared to the Abilene network, the ISP network could safely put more emphasis on setting the β values, because its rich connectivity makes it unlikely that equipment failures would lead to significant changes in the IGP distance between a pair of routers. The TIE mechanism is flexible enough to accommodate both of these networks.

In this section, we assume that the egress set for each

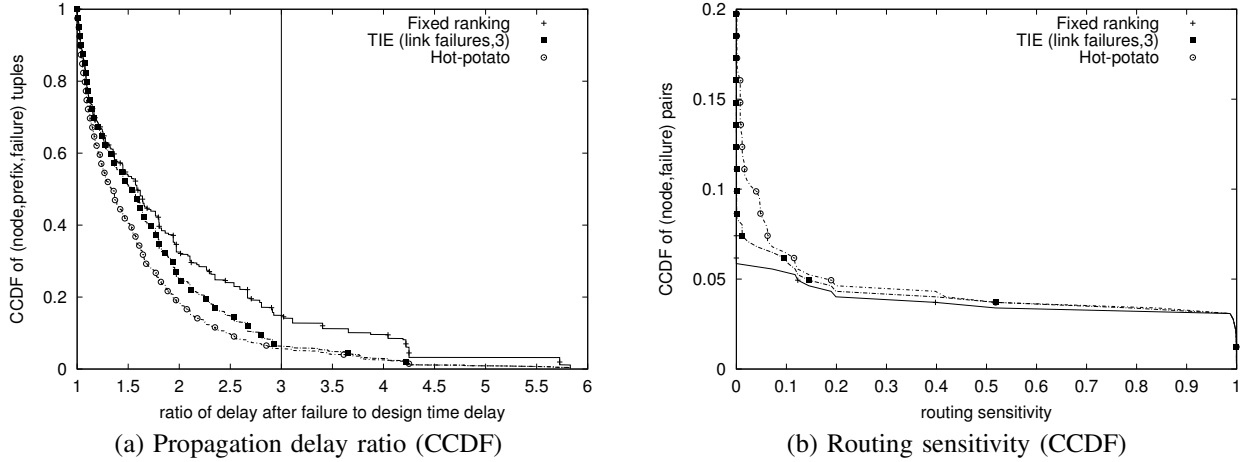


Fig. 6. Comparison of egress-selection schemes on the ISP network under single-node failures for TIE optimized for single-link failures and $T = 3$.

destination prefix is stable when determining the values of α and β . Our evaluation shows that even when an egress node is removed from the egress set, TIE behaves as expected. We can extend the formulation of this problem to find solutions that are robust to egress-set changes. For instance, we can configure TIE to react slowly to the announcement of new routes (i.e., additions to the egress set) by setting the values of $\alpha(\cdot, p, e)$ and $\beta(\cdot, p, e)$ to be very high for all $e \notin E(p)$. We can also extend our notion of topology change δ to include changes to the egress sets.

V. ONGOING WORK: TRAFFIC ENGINEERING

Traffic engineering—adapting the flow of traffic to the prevailing network conditions—is a common task that can be performed in several ways. The problem presented in the previous section assumes that the network is over provisioned, which allow us to optimize prefixes in isolation. However, for traffic engineering the egress-point selection for one prefix impacts the decision for another. For example, consider the egress-selection decision for prefixes p_1 and p_2 at router C in Figure 7, p_1 is a VoIP prefix and p_2 corresponds to Web servers. In this example, router C has to choose between egresses A and B . Assume that the path with IGP distance 9 has high capacity, whereas the paths with cost 10 and 11 have lower capacity. When all three paths are working, the network administrators want C to use egress-point B for both prefixes. However, if the path with cost 9 fails, they would like to balance the load over the two lower-bandwidth links. Since the voice traffic to p_1 is sensitive to the routing change, the network administrators would prefer to use B for p_1 and A for p_2 . This policy can be implemented by setting the parameters as presented in Table III. C 's egress selection to p_1 behaves like a fixed ranking of the egress points, whereas p_2 behaves like hot-potato routing.

Despite the simplicity of this policy, current egress-selection mechanisms cannot express it. Hot-potato routing would cause both p_1 and p_2 to shift to egress A after the path with cost 9 fails, and ranking egress B over A for all prefixes would force all traffic over the low-capacity path with cost 11. Of course, after the failure, the network administrators could change the

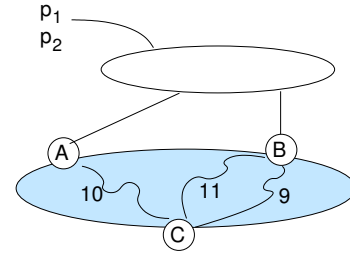


Fig. 7. Example illustrating heterogeneous traffic types.

	α		β	
	A	B	A	B
p_1	0	0	2	1
p_2	1	1	0	0

TABLE III

CONFIGURATION OF PARAMETERS FOR EXAMPLE IN FIGURE 7.

BGP import policy to p_2 at A to make it look better than B . However, there is a long delay before they can detect the failure and identify the BGP policy that should be applied in order to alleviate the problem. Our mechanism allows this policy to be implemented at design time and the network to adapt to failures automatically as they occur.

We propose an optimization problem that balances link utilization on the network only by selecting the appropriate egress point for each pair (i, p) (i.e., by setting the values of $\beta(i, p, e)$). This is in contrast with the common practice of optimizing link utilization by either tweaking IGP link weights or BGP policies. We formulate the egress-selection problem as a *path-based* multicommodity-flow problem that accounts for the constraints that the intradomain routing imposes on the flow of traffic. Our preliminary results [21] show that TIE had lower overall link utilization than hot-potato routing for both Abilene and the tier-1 ISP networks.

VI. IMPLEMENTATION ISSUES

An AS can deploy the TIE mechanism without changing the intradomain or interdomain routing protocols, and without the cooperation of other domains. In this section, we first describe

how to ensure that each router can apply TIE independently of other routers in the AS. Next we discuss how to configure the α and β parameters and how a router applies the TIE mechanism to select a BGP route for each destination prefix. Then, we discuss how moving the responsibility for BGP path selection from the routers to separate servers [22, 23] would make it possible to implement our TIE scheme without *any* modification to the decision logic running on the routers.

A. Allowing Independent Decisions at Each Node

Throughout the paper, we have assumed that each node applies the TIE mechanism to select a single best route from the set of equally-good BGP routes chosen by the border routers. In a network with a “full mesh” internal BGP (iBGP) configuration, each router learns these routes directly from the border routers. However, large networks typically employ route reflectors to overcome the scaling problems of having an iBGP session for each pair of routers. A route reflector runs the BGP decision process and propagates a single best route to its clients; as a result, the clients may choose a different best route than they would with all of the options at their disposal⁴. Consider the common scenario with a full mesh of top-level route reflectors, with one or more route reflectors in each PoP. In this scenario, we recommend applying the TIE mechanism only on the route reflectors to allow decisions based on a complete view of the BGP routes. The client routers (i.e., other routers in the same PoP) would inherit the choice made by their common route reflector. This has the added advantage that only the route reflectors would need to be upgraded to implement the TIE mechanism.

The TIE mechanism also relies on the underlying network to forward data packets from the ingress router to the chosen egress point. However, the routers along the forwarding path do not necessarily select the same egress point, depending on how their α and β parameters are configured. This problem does not arise in hot-potato routing because each router selects the closest egress point, which ensures that the routers along the shortest path have chosen the same egress point. Rather than constraining the way α and β are set on different routers, we advocate that the network employ some form of lightweight tunneling to direct traffic over the shortest IGP path(s) from the ingress point to the egress point. For example, the ingress router could encapsulate each data packet in an IP packet where the destination corresponds to the IP address of the chosen egress router. Alternatively, the network may employ MPLS [17, 18] to create label-switched paths (LSPs) between all ingress-egress pairs, as discussed earlier in Section II-B. Tunneling IP packets over the underlying IGP paths is a common usage of MPLS since it obviates the need for interior routers to speak BGP or have a large forwarding table, while also allowing the network to forward VPN and non-IP traffic.

⁴The way route reflectors affect the BGP decisions of their clients leads to a variety of operational problems, such as protocol oscillation and forwarding loops [24–26]. An appealing way to avoid these problems, while retaining most of the scalability advantages, is to have the route reflectors forward *all* of the equally-good BGP routes to their clients [25]. This enhancement to route reflectors would allow each router in the AS to apply the TIE mechanism based on a complete view of the egress set for each destination prefix.

B. Configuring and Applying TIE in Routers

Using the TIE mechanism requires configuring the routers with the values of α and β selected by the optimization routine. As discussed in Section III-C, rather than configuring these values by hand, we envision that a network-management system would connect to each router to set or modify the parameters. Still, configuring a large number of values may introduce significant overhead and delay. In the worst case, each router would need to be configured with two integer values for every destination prefix and edge router. For a network with 500 edge routers and 150,000 destination prefixes, this would require configuring 75 billion parameters (i.e., $500 \cdot 500 \cdot 2 \cdot 150,000$), which is clearly excessive. Fortunately, a router often has the same values of α and β across many destination prefixes and egress points. To capitalize on this observation, the TIE mechanism could have default values of $\alpha = 1$ and $\beta = 0$ (corresponding to hot-potato routing) for each prefix, allowing the management system to specify only the parameters that differ from these values. For example, in Section IV only 10% of the β values were non-zero for the tier-1 ISP backbone, which would reduce the configuration overhead by an order of magnitude.

Another way to reduce the overhead is to assign α and β at a coarser granularity than individual routers and destination prefixes. For example, the parameters could be defined for PoPs, rather than routers, particularly if TIE is implemented only at the route reflector(s) in each PoP. If the 500-router network has (say) 25 PoPs, the number of parameters would drop by a factor of 400 (i.e., 25 PoPs would be configured with two parameters per prefix for 25 egress PoPs). In addition, the parameters could be based on the destination AS (i.e., the origin AS that initially announced the BGP route), rather than the destination prefix. If the Internet has (say) 20,000 ASes and 150,000 prefixes, this would reduce the number of parameters by an additional factor of 7.5. Together, these two optimizations would reduce the number of parameters by a factor of 3000, from 75 billion down to 25 million across all the routers in the network, which seems acceptable particularly if the management system need only specify exceptions to the default α and β values. Further reductions can be achieved by associating α and β values with the next-hop AS or other route attributes.

When α and β are not associated directly with particular prefixes and egress routers, the ingress router needs some way to know which parameters to use in selecting a BGP route for a prefix. The BGP *community* attribute [27] provides an effective way to communicate which parameters should be used. For example, the border routers could be configured to tag each BGP advertisement with a unique community value that identifies the PoP. Another community could be used to identify the origin AS or next-hop AS associated with the advertisement. Upon receiving these tagged routes via internal BGP (iBGP), a router can use these community values to index into a table that stores the α and β values⁵.

⁵Using BGP communities in this way is quite common. For example, policy-based accounting uses community attributes to determine which prefixes should have their traffic measured together by a single counter [28].

Once the router knows which α and β values to use, the router can compute the metric m based on these parameters and the IGP distance to the egress router. Rather than applying the traditional IGP tie-breaking step, the router can implement a modified BGP decision process that uses the m metric to select the route with the most-preferred egress point. Ultimately, the TIE mechanism requires only a change in one step of the BGP decision process implemented on the routers, rather than any protocol modifications. We note that router vendors already provide features that allow network administrators to modify the operation of the BGP decision process [29], which significantly reduces the barrier to deploying TIE.

C. Applying TIE in a Separate Path-Selection Platform

Rather than modifying the BGP decision process implemented on the routers, an AS could move the entire responsibility for BGP path selection to a separate software platform, as proposed in [22,23]. In this setting, dedicated servers receive the eBGP advertisements and run decision logic to select BGP routes on behalf of the routers in the AS. The servers use iBGP sessions to send each router a customized routing decision for each prefix, essentially overriding the influence of the BGP decision process running on the routers.

These servers could implement the TIE mechanism for selecting the routes in real time, and might also run the offline optimization routines that set the α and β parameters; this would allow the parameters to exist only on the servers, rather than in the routers or other management systems. Even though the servers could conceivably implement any decision logic, in practice they need some separation of functionality between the real-time adaptation to network events and the longer-term optimization of the path-selection process based on network-wide goals. TIE provides a way to achieve that separation.

VII. RELATED WORK

Our work relates to several ongoing threads of research in Internet routing:

Hot-potato disruptions: Measurement studies have shown that hot-potato routing changes can lead to long convergence delays, large shifts in traffic, and external BGP routing changes [2, 3]. Subsequent work proposed metrics of network sensitivity to internal changes to assist network administrators in minimizing hot-potato disruptions [20]. Rather than trying control disruptions using routing protocols as they are defined today, we redesign the boundary between the two tiers of the routing system to achieve a broader set of traffic-engineering goals (including minimizing disruptions).

Traffic engineering: Controlling the flow of traffic with TIE is an attractive alternative to the conventional approach of tuning IGP link weights [6–11] and BGP policies [12, 13]. Whereas TIE can set α and β independently for each (i, p) pair, tuning an IGP weight can affect the IGP distances between multiple pairs of routers and affect the egress-point selection for many prefixes. Similarly, tuning a BGP policy often impacts the route preferences for many routers at once. IGP and BGP changes also lead to routing-protocol messages and convergence delays. TIE also provides an alternative to

deploying a load-sensitive routing protocol, such as the traffic-engineering extensions to OSPF and IS-IS [30–32]. Load-sensitive routing leads to higher protocol overhead and can sometimes introduce instability. More recent work [33] solves this instability problem by balancing load over a set of pre-defined paths between ingress and egress. However, none of these proposals explicitly addresses the problem of egress-point selection, making it appealing to implement TIE even in networks that already support load-sensitive routing. In our future work, we plan to compare the benefits of TIE with these alternative approaches [32].

Optimizing egress-point selection: Previous research considered an optimization problem similar to the one we studied in Section V. The work in [34] focused on selecting egress points such that traffic loads do not exceed the egress-point capacities, with the secondary objective of minimizing the total distance traveled by the traffic. In contrast, we formulate an optimization problem that minimizes congestion over the links in the network, using the objective function used in earlier traffic-engineering studies [9].

Multi-homing: In recent years, an increasing number of stub ASes, such as large enterprise and campus networks, connect to multiple upstream providers for improved reliability and flexibility. In response, several research studies have considered how these networks should balance load over the multiple access links [35,36]. However, our problem is different because we focus on networks where each destination prefix has a (possibly different) set of egress points, and the choice of egress point affects the load on links *inside* the AS.

Inter-AS negotiation: Other research has considered how a pair of neighboring ASes could coordinate to select egress points in a mutually advantageous manner [37,38]. Where these papers focus on the negotiation process, and on the important question of what information the ASes should exchange, we propose a tunable mechanism for selecting the egress points and a way for each AS to determine its preferred egress points based on network-wide objectives.

VIII. CONCLUSION

IP networks are under increasing pressure to provide predictable communication performance for applications such as voice over IP, interactive gaming, and commercial transactions. These applications are sensitive to both transient disruptions (i.e., during routing changes) and persistent congestion (i.e., when the routing does not match the prevailing traffic). In this paper, we propose a new mechanism for selecting egress points that satisfies both requirements. TIE avoids the disruptions caused by hot-potato routing changes while supporting diverse network-wide objectives such as traffic engineering and maintenance planning.

TIE is simple enough for routers to adapt in real time to network events, and yet is much more amenable to optimization than today's routing protocols. In addition, TIE can be deployed in an AS without changing the intradomain or interdomain routing protocols, and without the cooperation of other domains. Our experiment for one network-management problem, using data from two backbone networks, demonstrate

the effectiveness of our new mechanism and the ease of applying conventional optimization techniques to determine the best settings for the tunable parameters.

APPENDIX

In Section IV, we evaluate TIE on data from two operational networks. In this appendix, we present our methodology for obtaining the input data—the internal topology and the egress sets—from passive measurements. Since routers in the same Point-of-Presence (PoP) essentially act as one larger node, we model the topology of both networks at the PoP level.

Abilene Network. Abilene is the backbone for U.S. research network [39]. The network has 11 PoPs with one router each. The vast majority of the links are OC192, with only one OC48. For our study, we used data from April 2003. We obtained the topology G (both with designed weights and geographic distance) and link capacities $c(l)$ from the publicly-available map of the network. This map has the location of each router, as well as the link capacities and IGP weights. Each BGP speaker has around 7,500 prefixes in its routing table. We obtained the egress set $E(p)$ for each prefix from a dump of the BGP table for a monitor that peers with every router. The network had only 23 distinct egress sets.

Tier-1 ISP Network. We also used data collected from a tier-1 service-provider backbone on January 10, 2005. We extracted the router-level topology and IGP link weights from the link-state advertisements logged by a routing monitor. We used router configuration data to map each router to a PoP and determine the link capacities. The resulting topology has a few dozen nodes. For simplicity, we combine parallel links between a pair of PoPs into one link with the aggregate capacity. We used the PoP locations to determine the geographic distance traversed by each inter-PoP link. The network learns BGP routes for approximately 150,000 prefixes. We build the egress set $E(p)$ for each prefix from the BGP table dumps from all top-level route reflectors in the network. The network has a few hundred distinct egress sets.

REFERENCES

- [1] Y. Rekhter, T. Li, and S. Hares, “A Border Gateway Protocol 4 (BGP-4).” Internet Draft draft-ietf-idr-bgp4-26.txt, October 2004.
- [2] R. Teixeira, A. Shaikh, T. Griffin, and J. Rexford, “Dynamics of Hot-Potato Routing in IP Networks,” in *Proc. ACM SIGMETRICS*, June 2004.
- [3] R. Teixeira, N. Duffield, J. Rexford, and M. Roughan, “Traffic matrix reloaded: Impact of routing changes,” in *Proc. Passive and Active Measurement Workshop*, March/April 2005.
- [4] C. Labovitz, A. Ahuja, A. Bose, and F. Jahanian, “Delayed Internet Routing Convergence,” *IEEE/ACM Trans. Networking*, vol. 9, pp. 293–306, June 2001.
- [5] G. Iannaccone, C.-N. Chuah, S. Bhattacharyya, and C. Diot, “Feasibility of IP Restoration in a Tier-1 Backbone,” *IEEE Network Magazine*, March 2004.
- [6] B. Fortz and M. Thorup, “Optimizing OSPF/IS-Weights in a Changing World,” *IEEE J. Selected Areas in Communications*, vol. 20, no. 4, pp. 756 – 767, 2002.
- [7] D. H. Lorenz, A. Orda, D. Raz, and Y. Shavitt, “How good can IP routing be?,” Tech. Rep. 2001-17, DIMACS, May 2001.
- [8] B. Fortz and M. Thorup, “Internet traffic engineering by optimizing OSPF weights,” in *Proc. IEEE INFOCOM*, March 2000.
- [9] B. Fortz, J. Rexford, and M. Thorup, “Traffic Engineering with Traditional IP Routing Protocols,” *IEEE Communication Magazine*, October 2002.
- [10] M. Ericsson, M. Resende, and P. Pardalos, “A genetic algorithm for the weight setting problem in OSPF routing,” *Journal of Combinatorial Optimization*, vol. 6, pp. 299–333, 2002.
- [11] L. Buriol, M. Resende, C. Ribeiro, and M. Thorup, “A hybrid genetic algorithm for the weight setting problem in OSPF/IS- routing,” Tech. Rep. TD-5NTN5G, AT&T Labs Research, 2003.
- [12] N. Feamster, J. Winick, and J. Rexford, “A Model of BGP Routing for Network Engineering,” in *Proc. ACM SIGMETRICS*, June 2004.
- [13] S. Uhlig, “A multiple-objectives evolutionary perspective to interdomain traffic engineering in the Internet,” in *Workshop on Nature Inspired Approaches to Networks and Telecommunications*, September 2004.
- [14] A. Nucci, B. Schroeder, N. Taft, and C. Diot, “IGP Link Weight Assignment for Transient Link Failures,” in *Proc. International Teletraffic Congress*, August 2003.
- [15] B. Fortz and M. Thorup, “Robust optimization of OSPF/IS- weights,” in *Proc. International Network Optimization Conference*, pp. 225–230, October 2003.
- [16] A. Sridharan and R. Guerin, “Making OSPF/IS- routing robust to link failures,” tech. rep., University of Pennsylvania, July 2004.
- [17] E. Rosen, A. Viswanathan, and R. Callon, “Multiprotocol Label Switching Architecture.” RFC 3031, January 2001.
- [18] B. S. Davie and Y. Rekhter, *MPLS: Technology and Applications*. Morgan Kaufmann, May 2000.
- [19] Ilog S.A., “*Ilog Cplex 9.0 User’s Manual*”, October 2003.
- [20] R. Teixeira, T. Griffin, A. Shaikh, and G. Voelker, “Network sensitivity to hot-potato disruptions,” in *Proc. ACM SIGCOMM*, September 2004.
- [21] R. Teixeira, T. Griffin, M. Resende, and J. Rexford, “TIE Breaking: Tunable Interdomain Egress Selection,” Tech. Rep. TD-69EJBE, AT&T Labs Research, February 2005.
- [22] N. Feamster, H. Balakrishnan, J. Rexford, A. Shaikh, and J. van der Merwe, “The Case for Separating Routing from Routers,” in *ACM SIGCOMM Workshop on Future Directions in Network Architecture*, August 2004.
- [23] O. Bonaventure, S. Uhlig, and B. Quoitin, “The Case for More Versatile BGP Route Reflectors.” Internet Draft draft-bonaventure-bgp-route-reflectors-00.txt, July 2004.
- [24] T. G. Griffin and G. Wilfong, “On the Correctness of IBGP Configuration,” in *Proc. ACM SIGCOMM*, August 2002.
- [25] A. Basu, A. Rasala, C.-H. L. Ong, F. B. Shepherd, and G. Wilfong, “Route Oscillations in I-BGP with Route Reflection,” in *Proc. ACM SIGCOMM*, August 2002.
- [26] D. McPherson, V. Gill, D. Walton, and A. Retana, “Border gateway protocol (BGP) persistent route oscillation condition.” RFC 3345, August 2002.
- [27] R. Chandra, P. Traina, and T. Li, “BGP communities attribute.” RFC 1997, August 1996.
- [28] “BGP policy accounting.” http://www.cisco.com/univercd/cc/td/doc/product/software/ios122/122newf%t/122t/122t13/ft_bgppa.htm.
- [29] “BGP cost community.” http://www.cisco.com/en/US/products/sw/iosswrel/ps5207/products_feature%_guide09186a00801a7f74.html.
- [30] D. Katz, K. Kompela, and D. Yeung, “Traffic Engineering (TE) Extensions to OSPF Version 2.” RFC 3630, September 2003.
- [31] H. Smit, “Intermediate System to Intermediate System (IS-IS) Extensions for Traffic Engineering (TE).” RFC 3784, June 2004.
- [32] D. Awduche, “MPLS and Traffic Engineering in IP Networks,” *IEEE Communication Magazine*, December 1999.
- [33] S. Kandula and D. Katabi, “TeXCP: Responsive Yet Stable Traffic Engineering,” in *Proc. ACM SIGCOMM*, August 2005.
- [34] T. Bressoud, R. Rastogi, and M. Smith, “Optimal configuration of BGP route selection,” in *Proc. IEEE INFOCOM*, 2003.
- [35] A. Akella, B. Maggs, S. Seshan, A. Shaikh, and R. Sitaraman, “A measurement-based analysis of multi-homing,” in *Proc. ACM SIGCOMM*, August 2003.
- [36] D. K. Goldenberg, L. Qiu, H. Xie, Y. R. Yang, and Y. Zhang, “Optimizing cost and performance for multihoming,” in *Proc. ACM SIGCOMM*, September 2004.
- [37] R. Mahajan, D. Wetherall, and T. Anderson, “Towards coordinated interdomain traffic engineering,” in *Proc. SIGCOMM Workshop on Hot Topics in Networking*, November 2004.
- [38] J. Winick, S. Jamin, and J. Rexford, “Traffic engineering between neighboring domains.” <http://www.cs.princeton.edu/~jrex/papers/interAS.pdf>, July 2002.
- [39] “Abilene Backbone Network.” <http://abilene.internet2.edu/>.