

# CAS

Copyright © 2025 by  
Robert M. Dondero, Ph.D.  
Princeton University

# CAS

- ***Central Authentication Service (CAS)***

**“The **Central Authentication Service (CAS)** is a single sign-on protocol for the web. Its purpose is to permit a user to access multiple applications while providing their credentials (such as userid and password) only once. It also allows web applications to authenticate users without gaining access to a user’s security credentials, such as a password.”**

– [https://en.wikipedia.org/wiki/Central\\_Authentication\\_Service](https://en.wikipedia.org/wiki/Central_Authentication_Service)

# CAS

- CAS authentication
  - **Part 1: User logs into CAS server**
    - Unnecessary if user is already logged into CAS server
    - User must provide credentials
  - **Part 2: User logs into PennyAdmin**
    - User need not provide credentials

# CAS

- See **PennyAdminCas** app

# Agenda

- CAS
  - **The code**
  - Running locally
  - Running on Render
  - How it works
  - Assessment

# The Code

- See **PennyAdminCas** app (cont.)
  - runserver.py
  - penny.sql, penny.sqlite
  - database.py
  - header.html, footer.html
  - index.html, show.html,
  - add.html, delete.html, reportresults.html
  - top.py, penny.py, auth.py

# Agenda

- CAS
  - The code
  - **Running locally**
  - Running on Render
  - How it works
  - Assessment

# Running Locally

- See **PennyAdminCas** app (cont.)
  - How to run it on your local computer...



# Running Locally

1. Create and activate an appropriate Python virtual environment. To do that, issue these commands:

```
mkdir ~/.virtualenvs  
python -m venv ~/.virtualenvs/somedir  
source ~/.virtualenvs/somedir/bin/activate
```

2. Install modules into your Python virtual environment. To do that, in your app directory issue this command:

```
python -m pip install -r requirements.txt
```

3. Run the server. To do that, in your app directory issue this command:

```
python runserver.py someport
```

# Running Locally

4. Browse to **http://localhost:someport**.

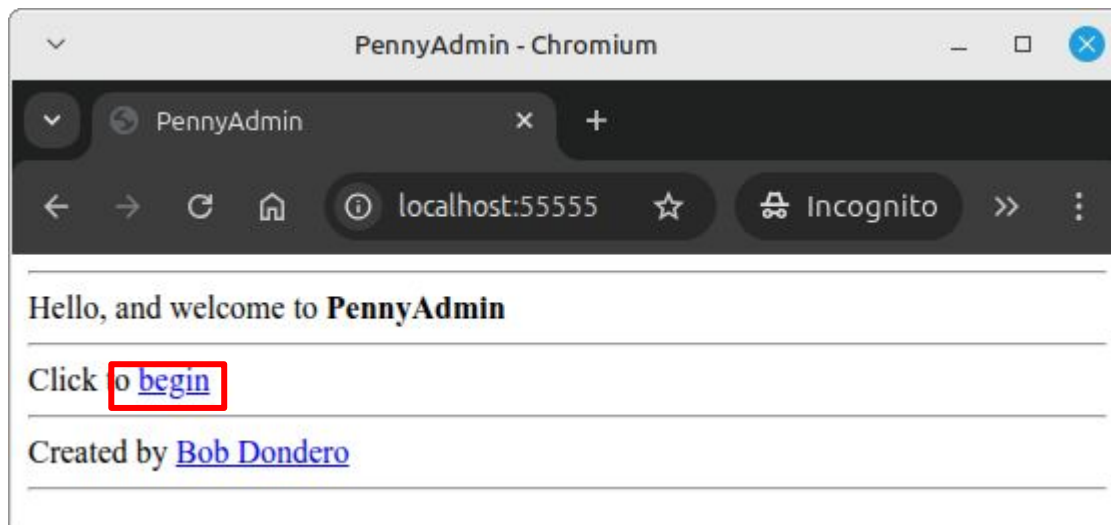
4.1. You must use **localhost** as the host. Using the real IP address of your computer won't work. Using **127.0.0.1** won't work.

5. Authenticate using CAS.

6. When prompted for an author name, enter Ker.

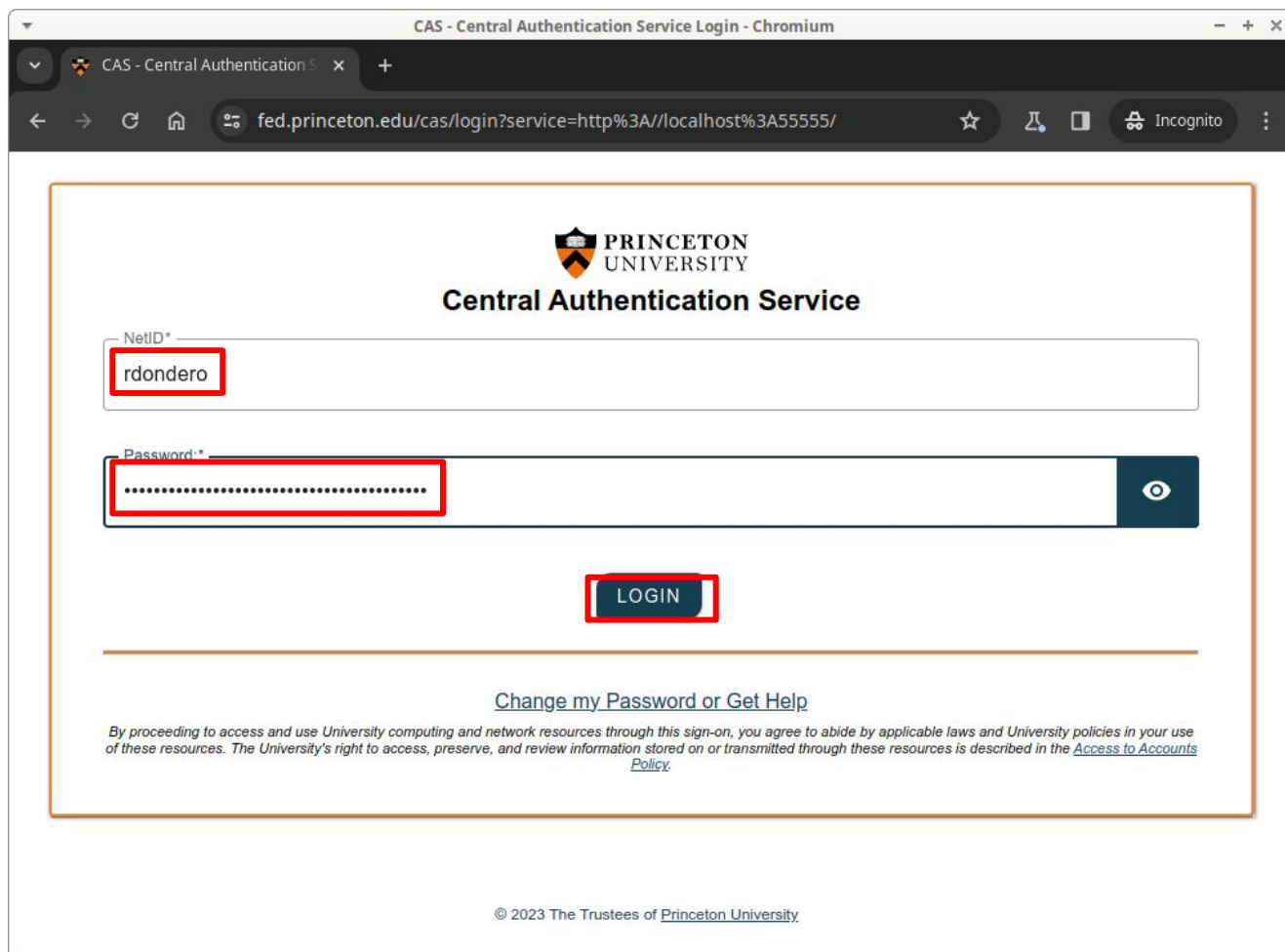
# Running Locally

- See **PennyAdminCas** app (cont.)



# Running Locally

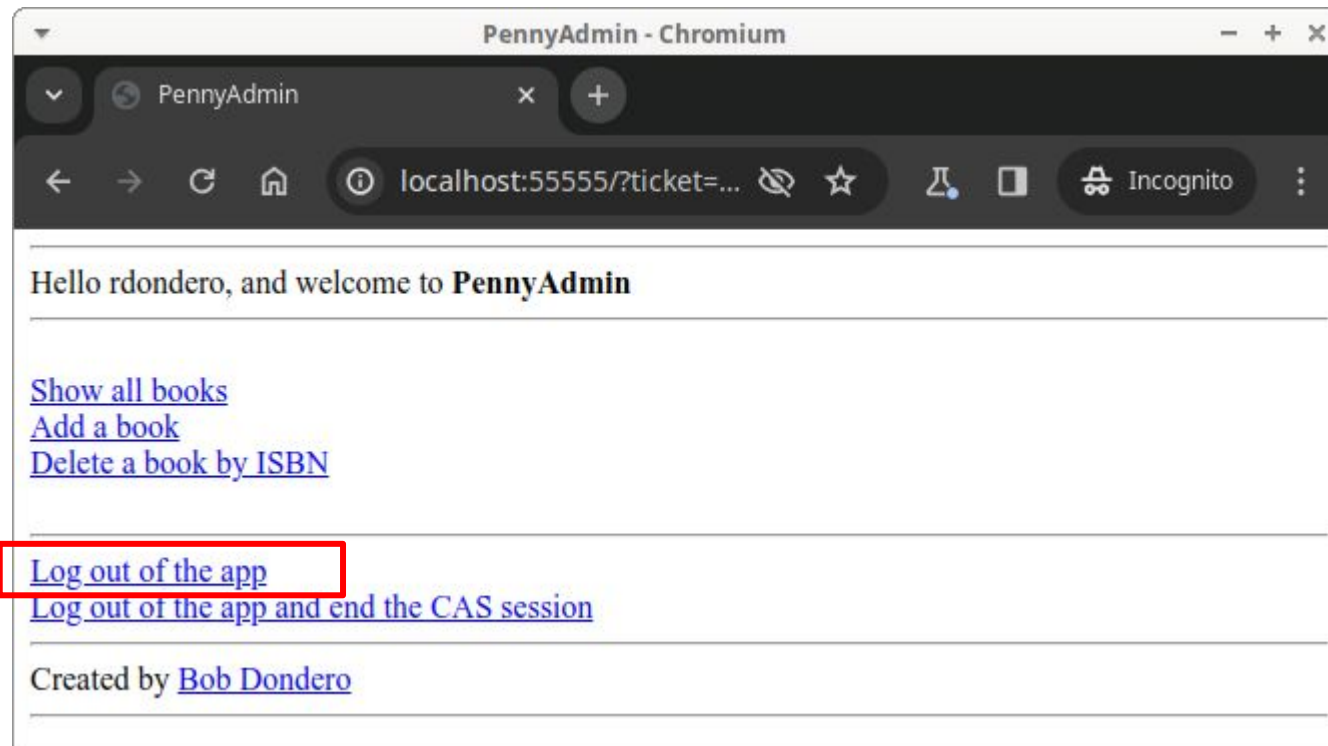
- See **PennyAdminCas** app (cont.)



The screenshot shows a web browser window titled "CAS - Central Authentication Service Login - Chromium". The address bar displays the URL "fed.princeton.edu/cas/login?service=http%3A//localhost%3A5555/". The page content is framed by an orange border and features the Princeton University logo and the text "Central Authentication Service". Below this, there are two input fields: "NetID\*" with the value "rdondero" and "Password\*" with a masked password. A "LOGIN" button is positioned below the password field. At the bottom of the form, there is a link "Change my Password or Get Help" and a disclaimer: "By proceeding to access and use University computing and network resources through this sign-on, you agree to abide by applicable laws and University policies in your use of these resources. The University's right to access, preserve, and review information stored on or transmitted through these resources is described in the [Access to Accounts Policy](#)." The footer of the page reads "© 2023 The Trustees of Princeton University".

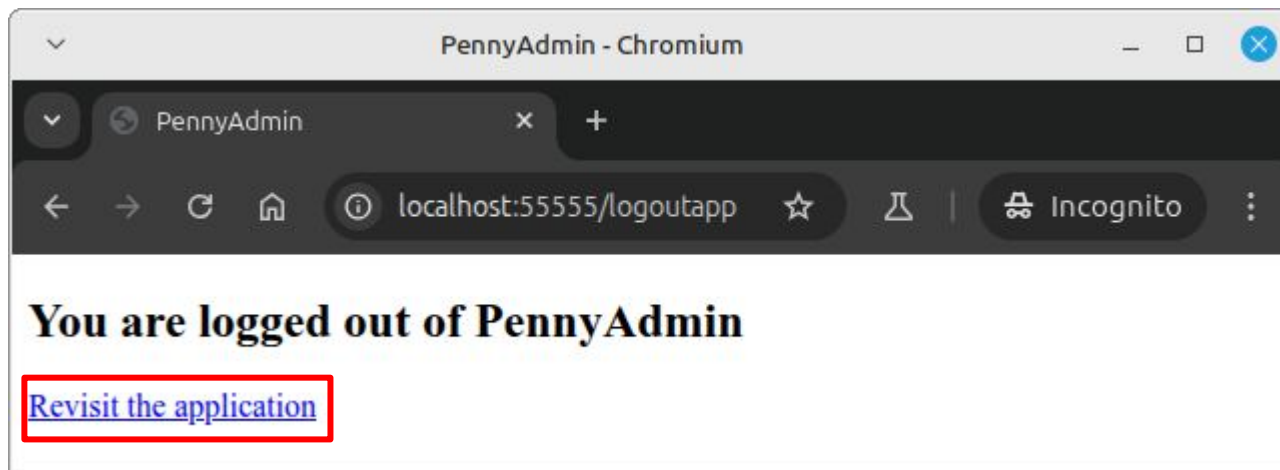
# Running Locally

- See **PennyAdminCas** app (cont.)



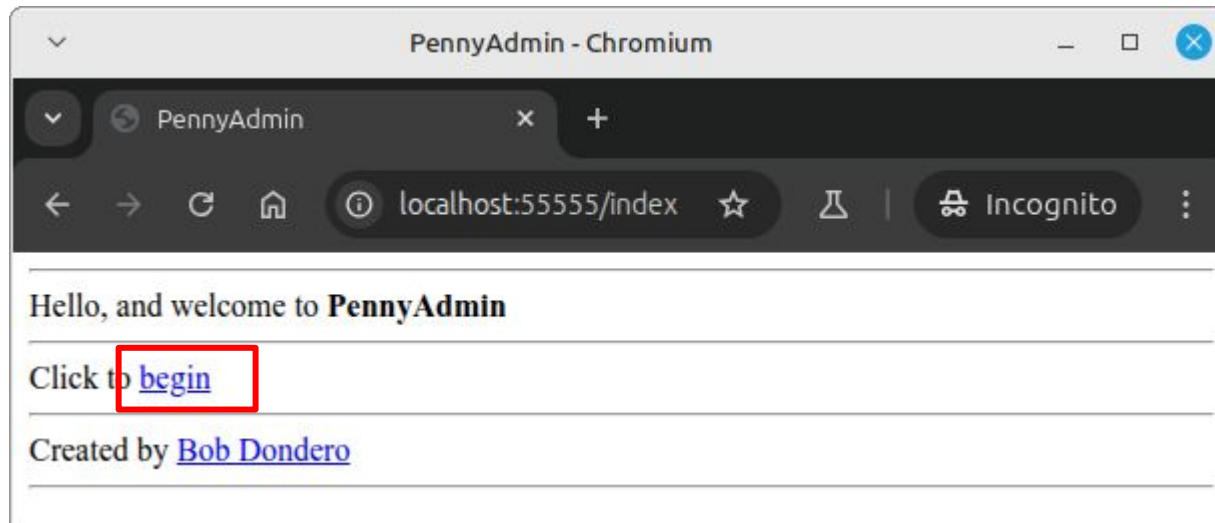
# Running Locally

- See **PennyAdminCas** app (cont.)



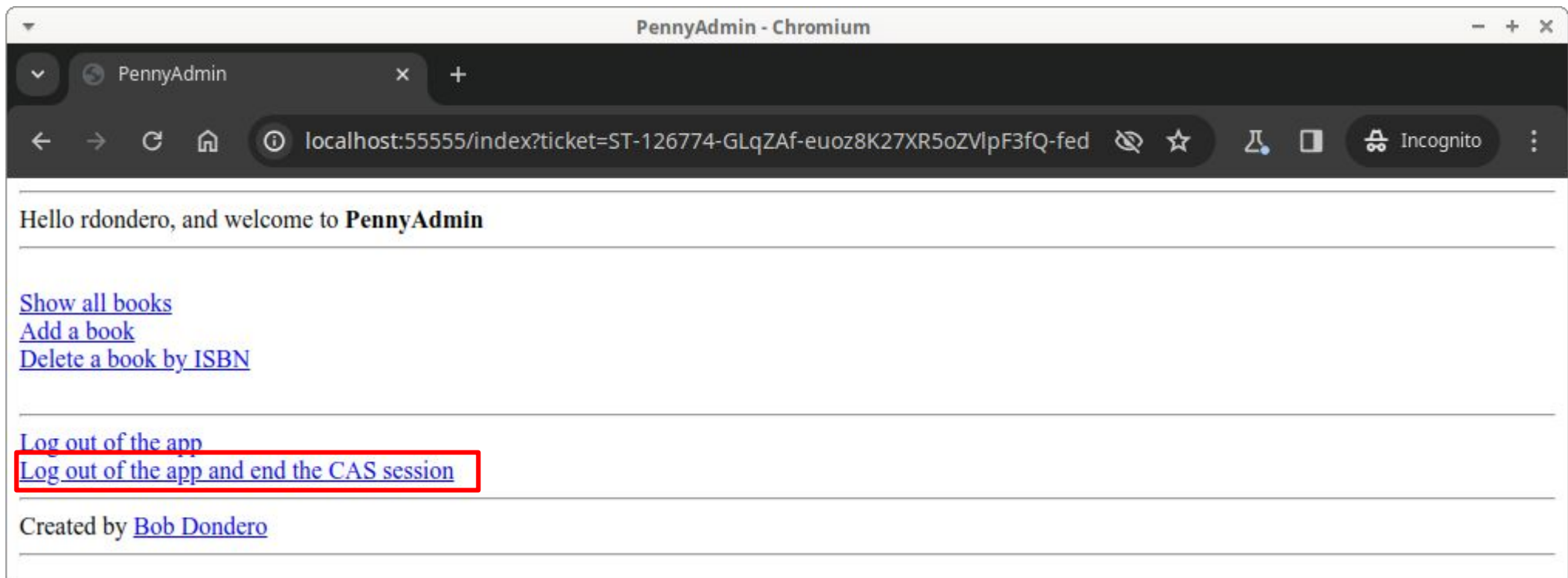
# Running Locally

- See **PennyAdminCas** app (cont.)



# Running Locally

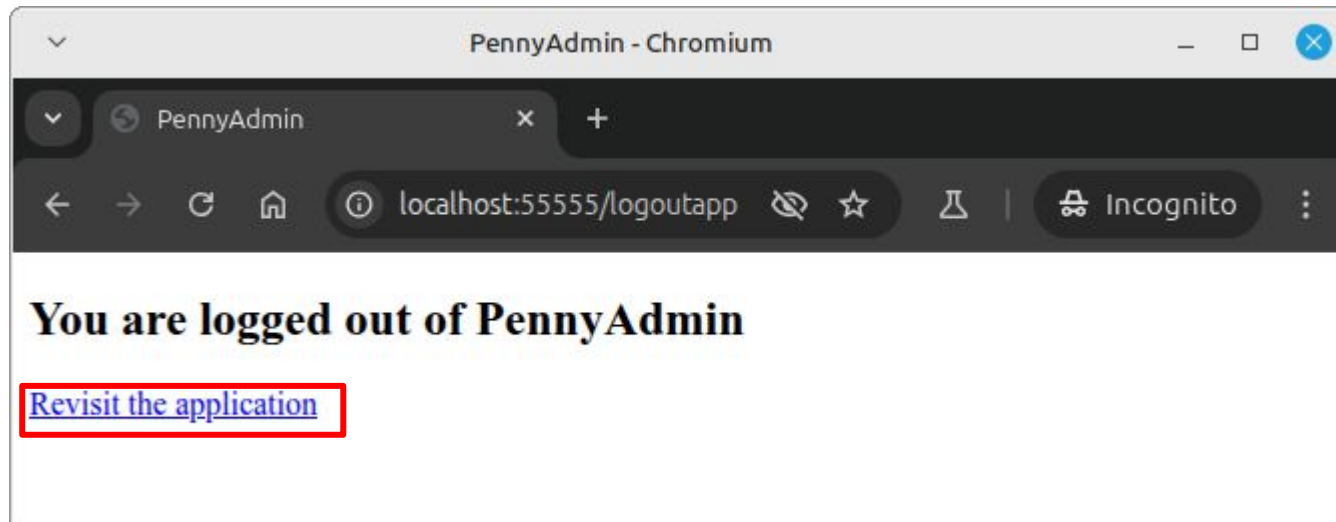
- See PennyAdminCas app (cont.)





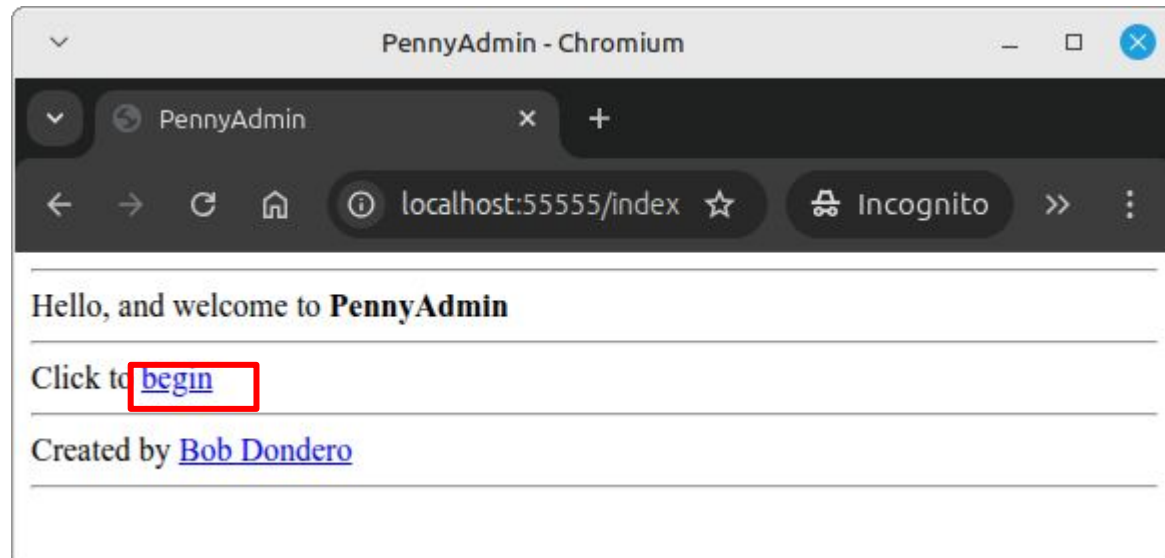
# Running Locally

- See **PennyAdminCas** app (cont.)



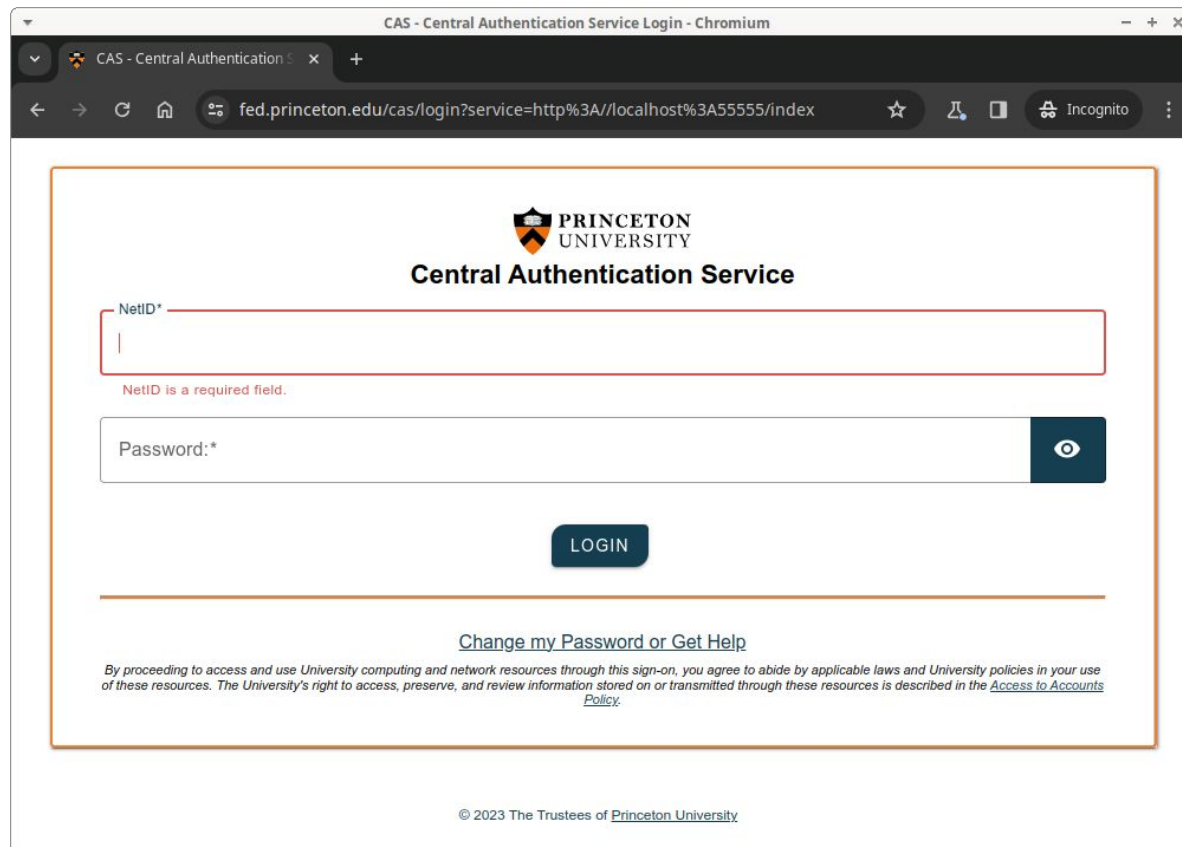
# Running Locally

- See **PennyAdminCas** app (cont.)



# Running Locally

- See **PennyAdminCas** app (cont.)



The screenshot shows a web browser window titled "CAS - Central Authentication Service Login - Chromium". The address bar displays the URL "fed.princeton.edu/cas/login?service=http%3A//localhost%3A55555/index". The page content features the Princeton University logo and the text "Central Authentication Service". Below this, there are two input fields: "NetID\*" and "Password:". The "NetID\*" field is currently empty and has a red border, with a red error message "NetID is a required field." below it. The "Password:" field is also empty and has a toggle icon (an eye) to its right. A dark blue "LOGIN" button is centered below the password field. At the bottom of the form, there is a link "Change my Password or Get Help" and a small disclaimer: "By proceeding to access and use University computing and network resources through this sign-on, you agree to abide by applicable laws and University policies in your use of these resources. The University's right to access, preserve, and review information stored on or transmitted through these resources is described in the [Access to Accounts Policy](#)." The footer of the page reads "© 2023 The Trustees of Princeton University".

# Agenda

- CAS
  - The code
  - Running locally
  - **Running on Render**
  - How it works
  - Assessment

# Running on Render

- See **PennyAdminCas** app (cont.)
  - How to deploy it to Render and run it there...

# Running on Render

1. Deploy the app to Render as a **Web Service**.

1.1. Provide this as the build command:

```
pip install -r requirements.txt
```

1.2. Provide this as the start command:

```
gunicorn penny:app
```

2. Register your Render app with Princeton's OIT.

2.1. Ask OIT to place your Render app, as identified by its URL, on the Princeton CAS white list. The COS 333 *Princeton Data Sources* web page describes how to do that.

3. Browse to **`https://yourappname.onrender.com`**.

4. Authenticate using CAS.

5. When prompted for an author name, enter Ker.

# Agenda

- CAS
  - The code
  - Running locally
  - Running on Render
  - **How it works**
  - Assessment

# How It Works

- See **PennyAdminCas** app (cont.)
  - How it works...



# How It Works

- Procedure
  - **Part 1:** User logs into CAS server
    - User must provide credentials
  - **Part 2:** User logs into PennyAdmin
    - User need not provide credentials

# How It Works

- See **PennyAdmin16Cas** app (cont.)
  - The flow...

## **Abbreviations:**

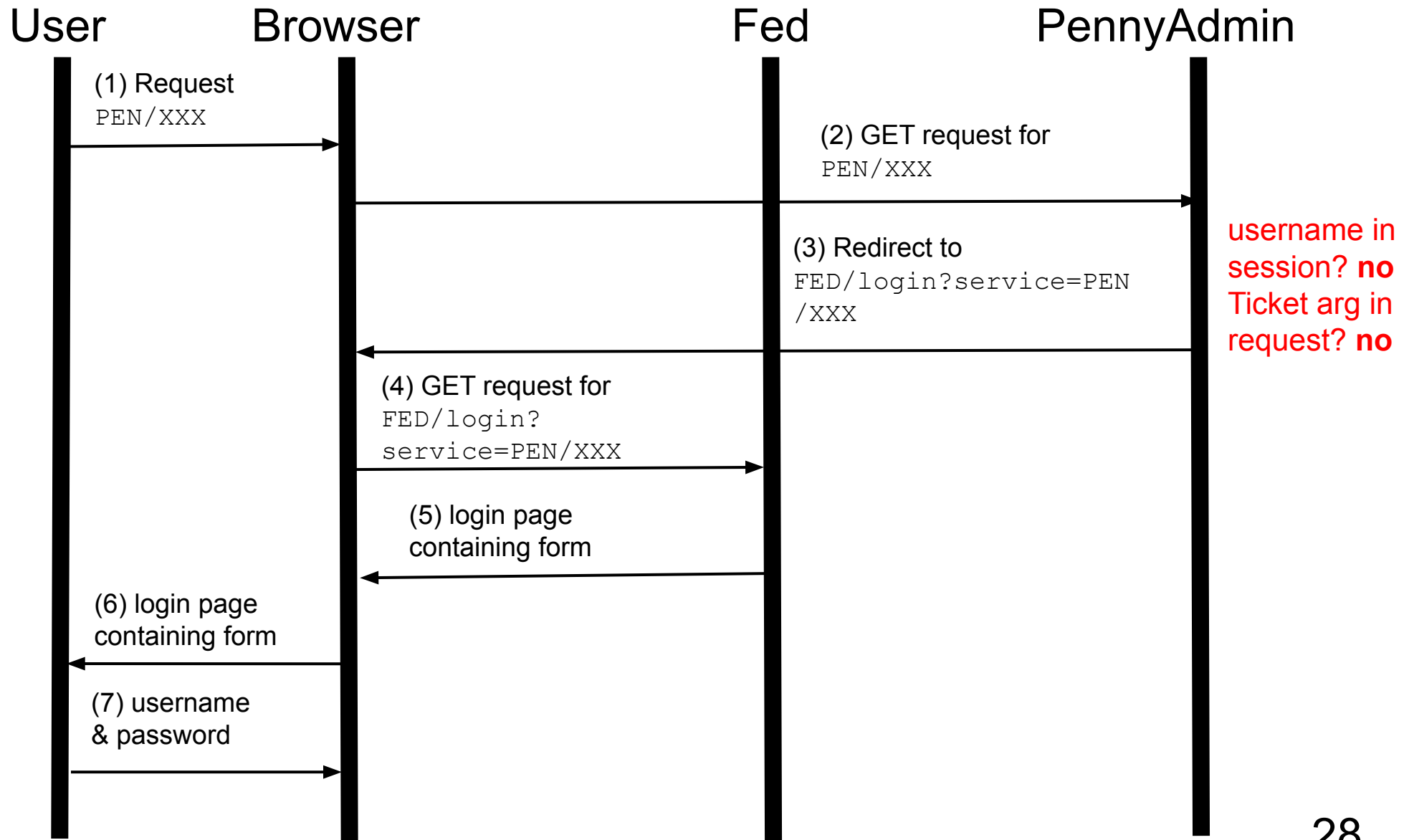
**FED** = <https://fed.princeton.edu/cas>

**PEN** = <https://localhost:55555>

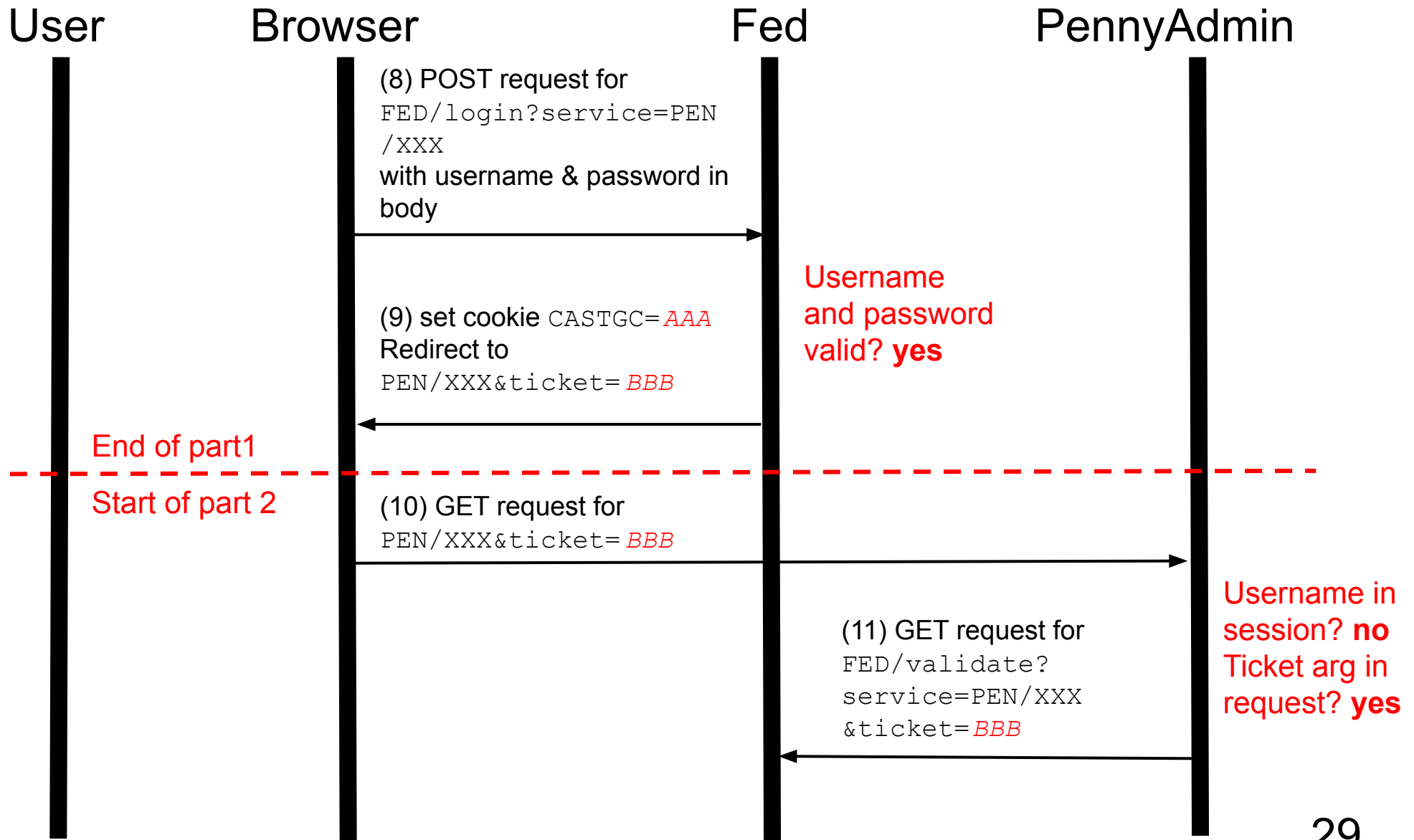
# How It Works

First use of PennyAdmin in browser session,  
browser session not CAS authenticated...

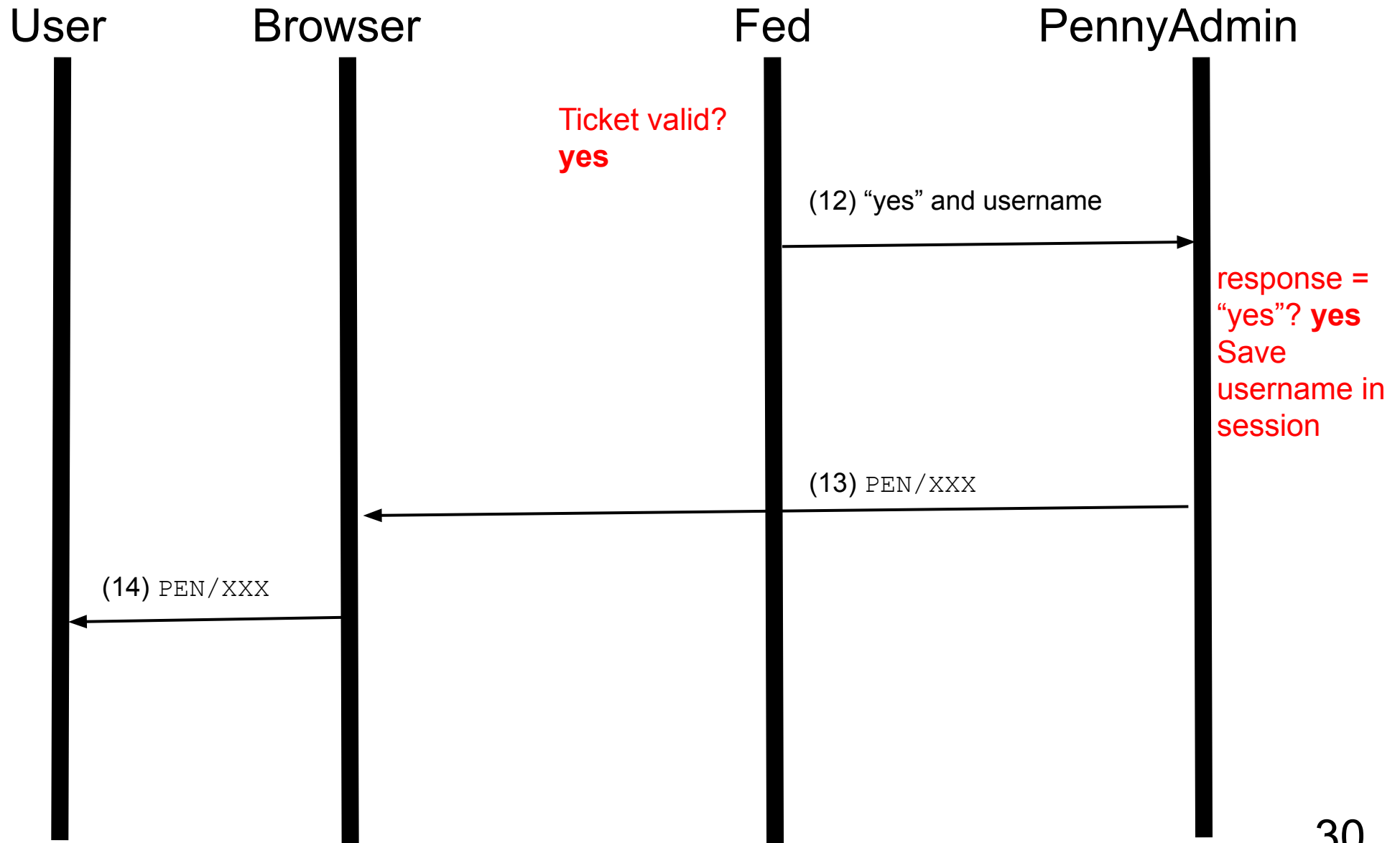
# How It Works



# How It Works



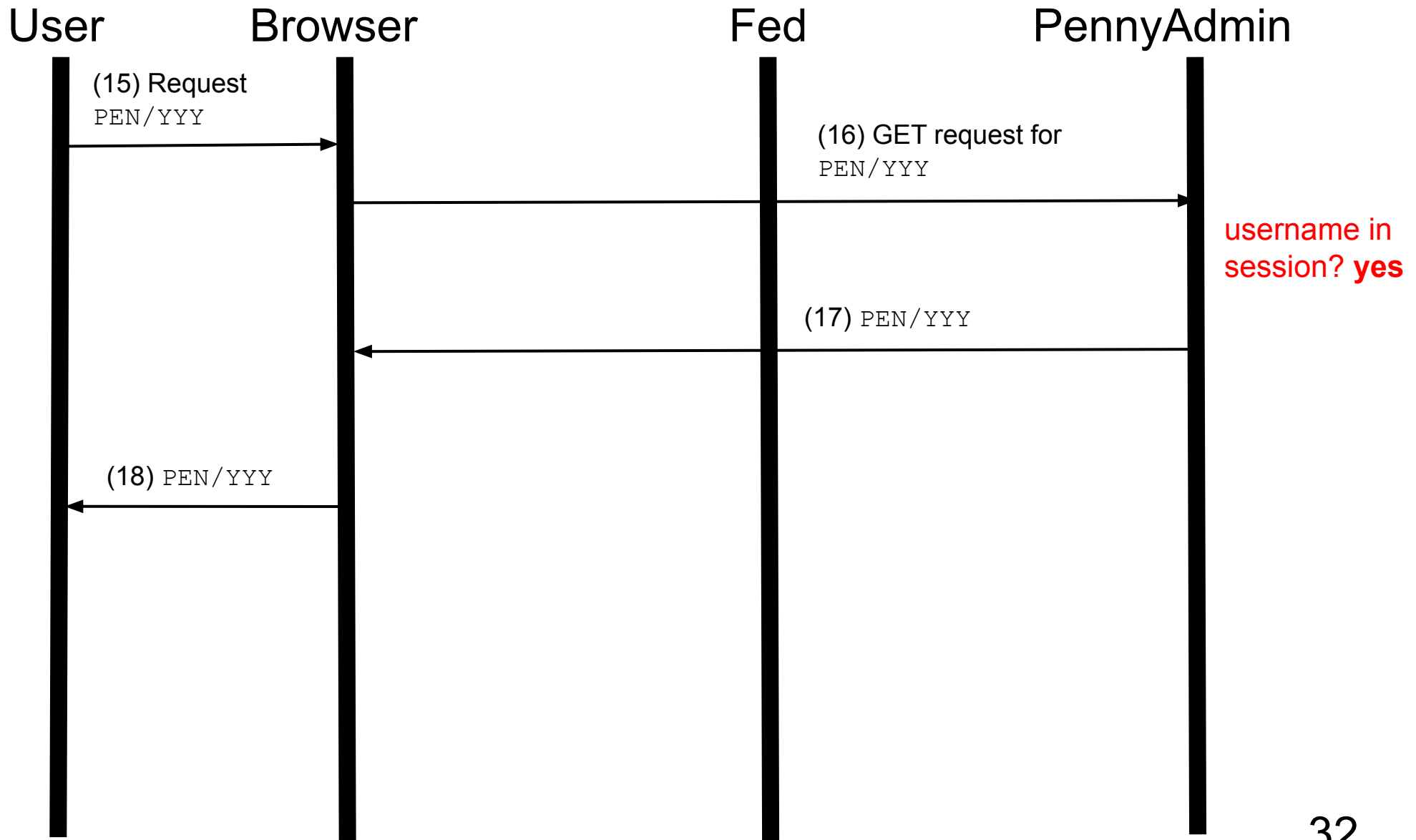
# How It Works



# How It Works

Second use of PennyAdmin in same browser session...

# How It Works

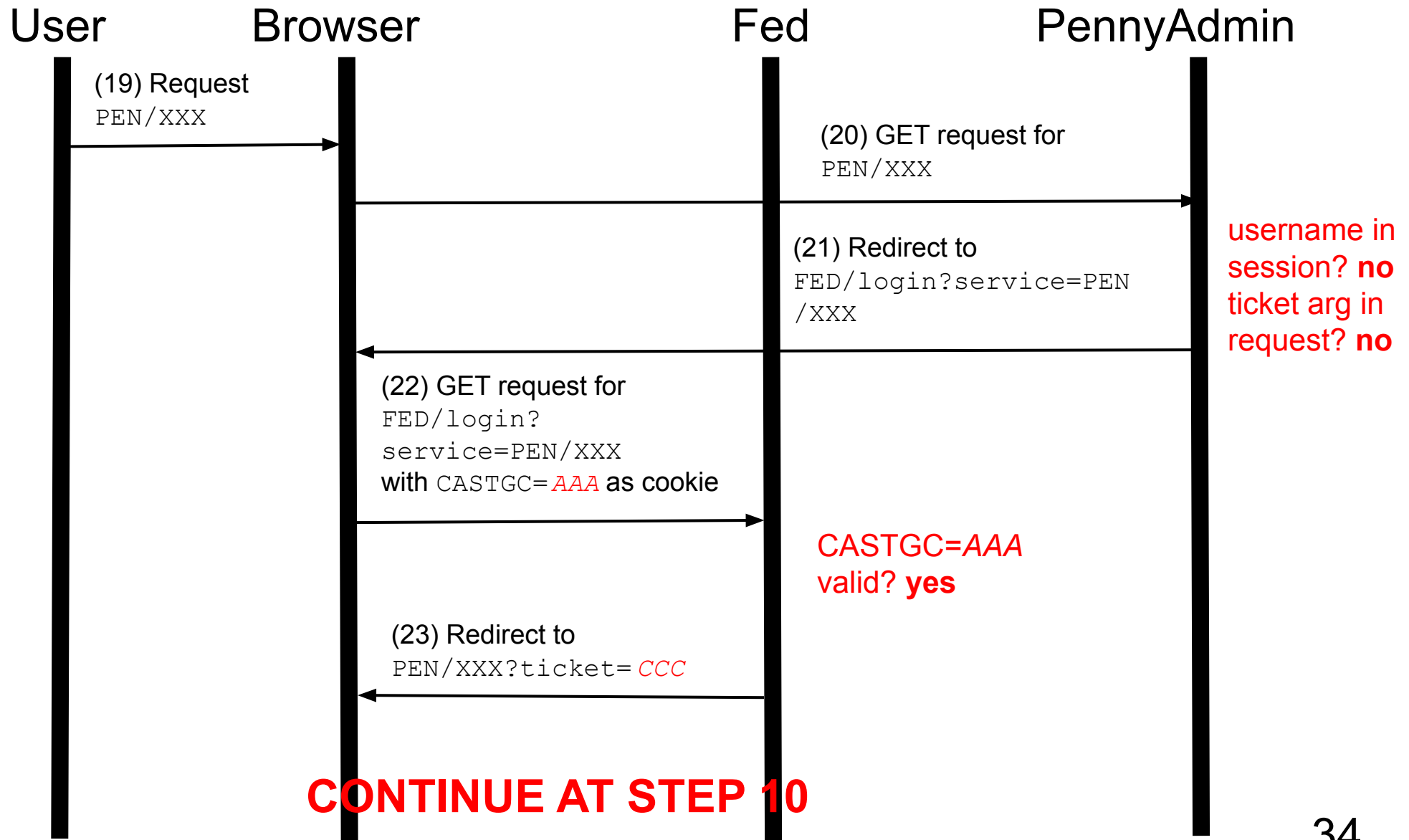




# How It Works

First use of PennyAdmin in browser session,  
browser session already CAS authenticated...

# How It Works



# Agenda

- CAS
  - The code
  - Running locally
  - Running on Render
  - How it works
  - **Assessment**

# Assessment

- **Pros**

- Application need not manage usernames or passwords
- Application ***cannot*** access passwords!
- Application is constrained to one user community
- Princeton OIT will support for the foreseeable future

# Assessment

- **Cons**

- Complex
- Adds overhead, but only during user's first visit to the app per browser session
- Application is constrained to one user community!
- Princeton OIT is phasing out
- Deployment requires (minimal) Princeton OIT intervention

# Assessment

- For more information...
- <https://apereo.github.io/cas/6.5.x/protocol/CAS-Protocol.html>