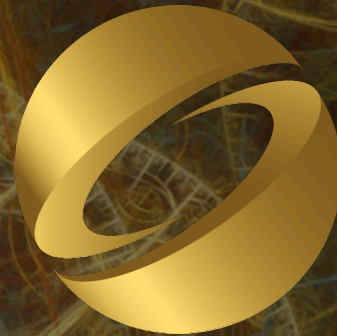




SIGGRAPH 2008

Where Do People Draw Lines?



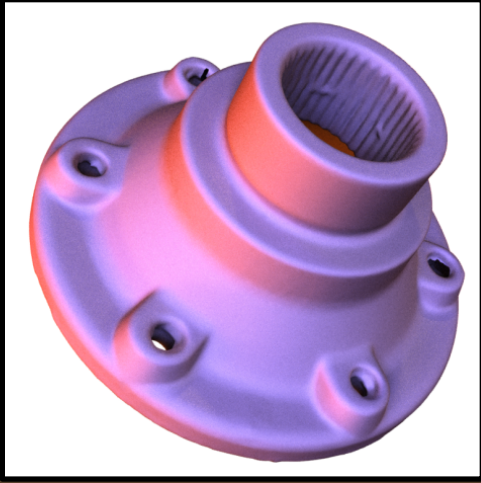
SIGGRAPH2008

Forrester Cole, Aleksey Golovinskiy,
Alex Limpaecher, Heather Stoddart Barros,
Adam Finkelstein, Thomas Funkhouser,
and Szymon Rusinkiewicz
Princeton University

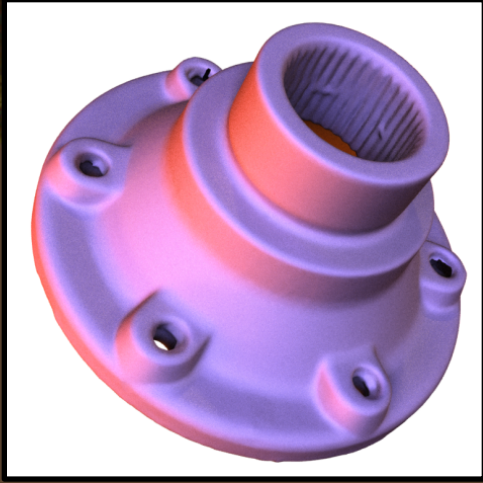
Project Goals

- Study what lines artists are likely to draw
- Describe these lines mathematically

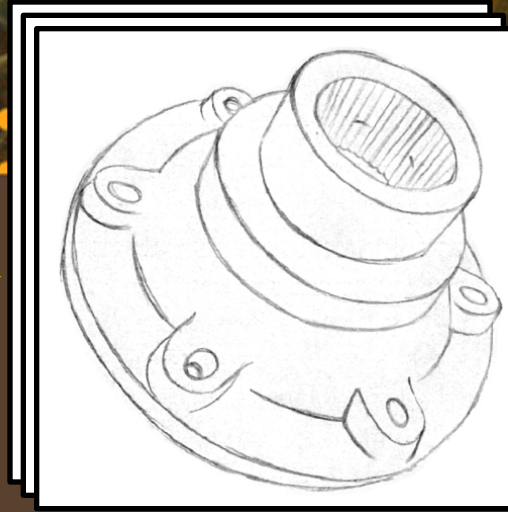
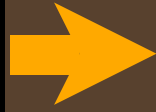




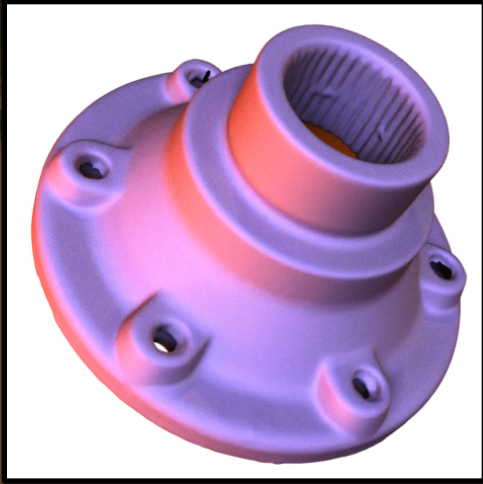
Prompt



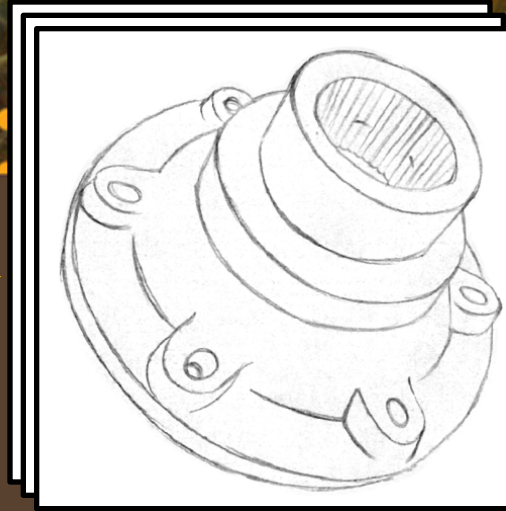
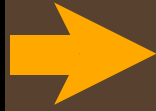
Prompt



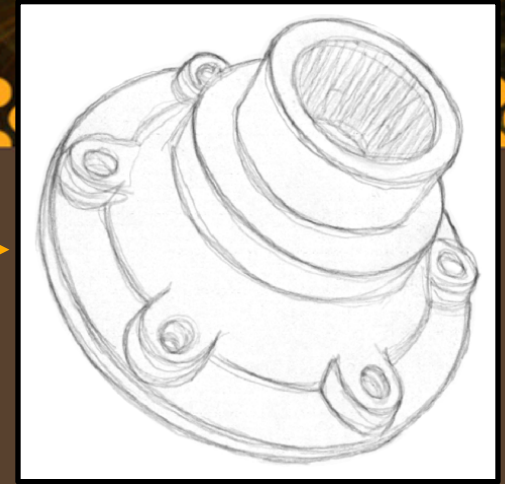
Drawings



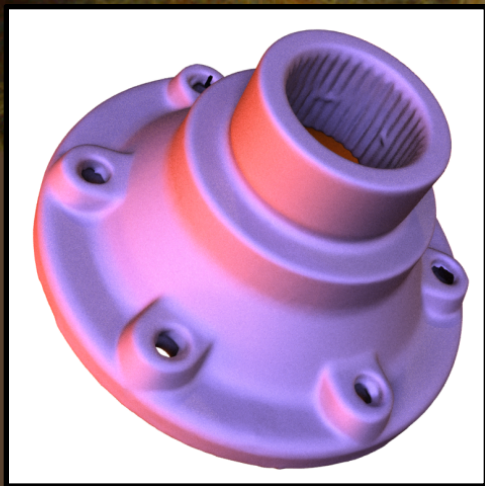
Prompt



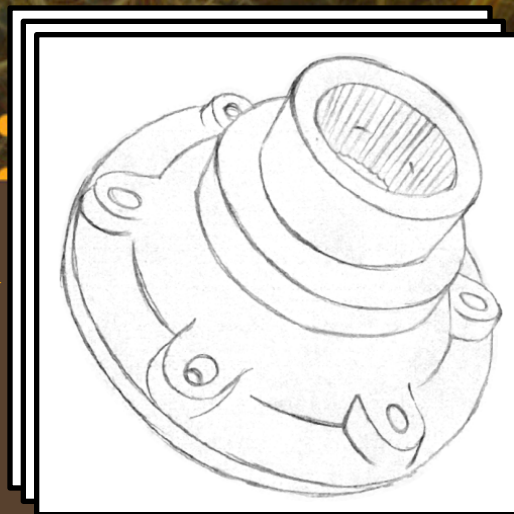
Drawings



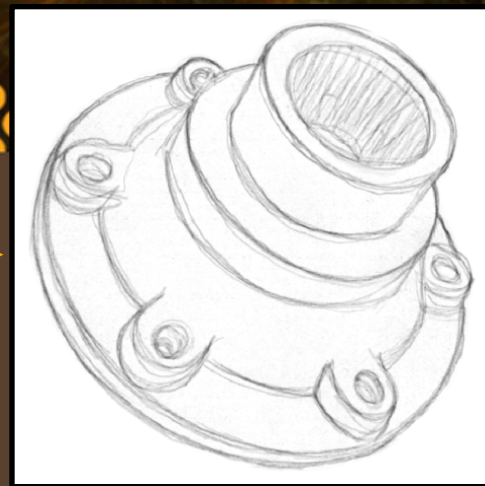
Average Drawing



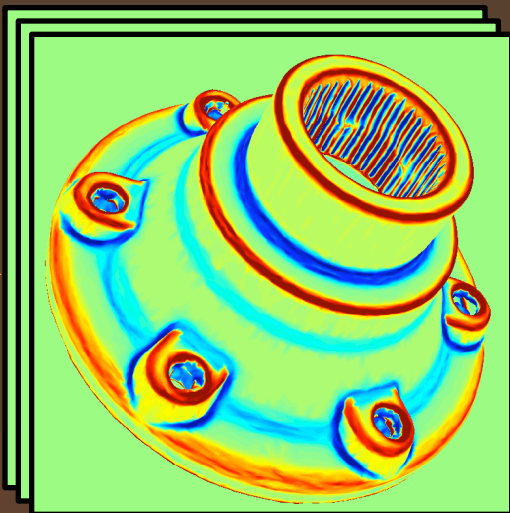
Prompt



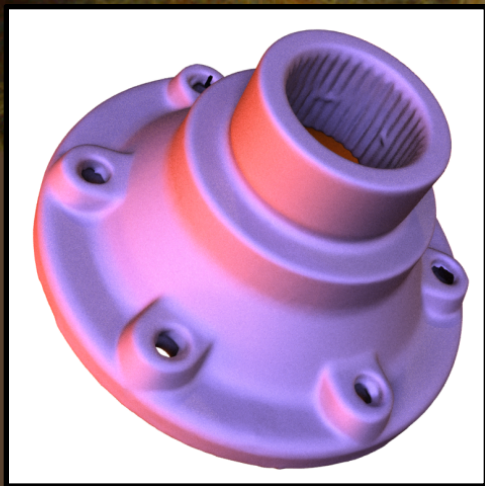
Drawings



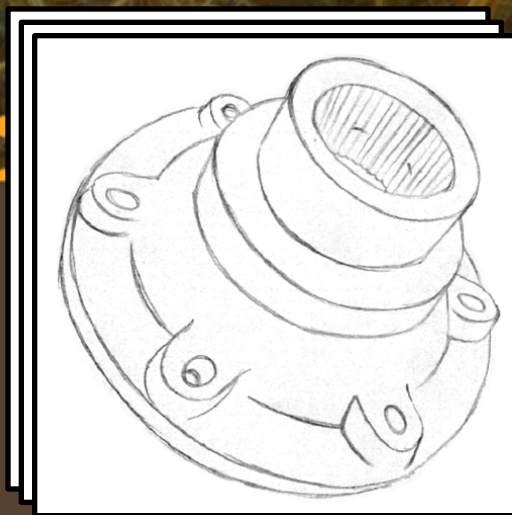
Average Drawing



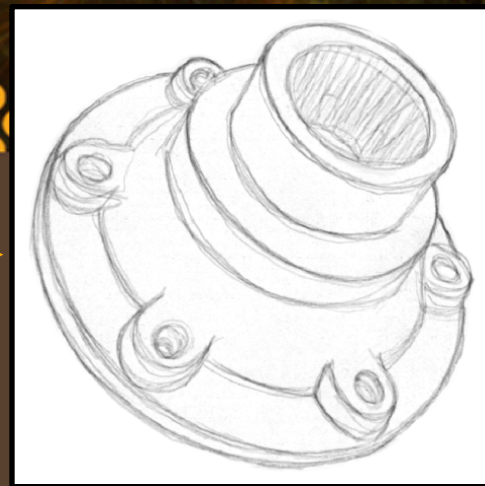
Shape Features



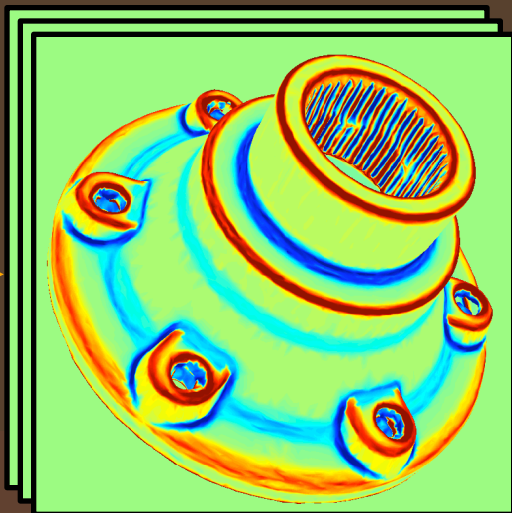
Prompt



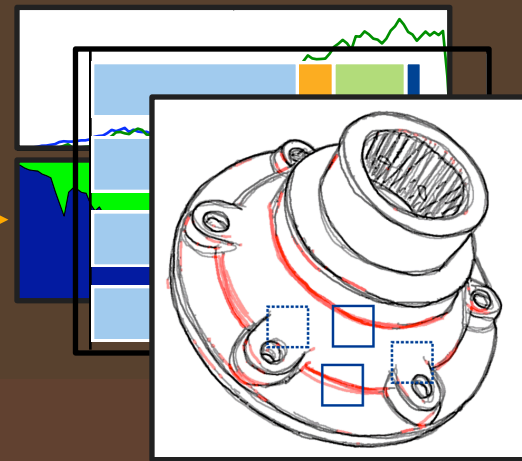
Drawings



Average Drawing



Shape Features



Mathematical Descriptions

Overview

- Background
 - Books on drawing
 - Algorithmic line drawing
 - Evaluation studies
- Study Design
- Analysis and Results
- Conclusion
- Dataset Demo



Books on Drawing

- Many, many books on principles of drawing
- Tend to focus on high level issues
- Some describe and suggest good lines
 - Particular lines on the nose [Peck 1982]
 - Contours and ridges [Smith 1997]
- Not particularly formal



Algorithmic Line Drawing

- Well-known lines
 - Occluding contours [Hertzmann 2000]
 - Geometric ridges and valleys [Ohtake 2004]
- New ideas for lines
 - Suggestive contours, highlights [DeCarlo 2003, 2007]
 - Apparent ridges [Judd 2007]
 - Lines via abstracted shading [Lee 2007]
- Informally compared with artists' drawings



Studies of Artists' Drawings

- Qualitative comparison with CG [Isenberg 2006]
- Analysis of texture statistics [Maciejewski 2008]
- Line depiction of 3D shapes [Phillips 2005]
 - Correlated lines with shading and curvature
 - Measured how accurately artists draw contours
 - Deliberately used ambiguous shapes

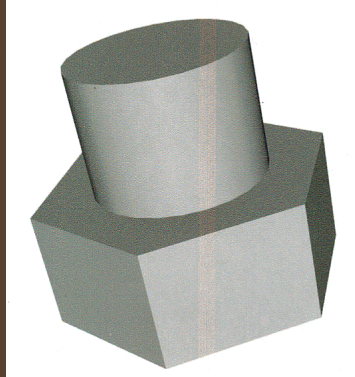


Overview

- Background
- Study Design
 - Artistic Style
 - Drawing Prompts
 - Study Protocol
- Analysis and Results
- Conclusion
- Dataset Demo

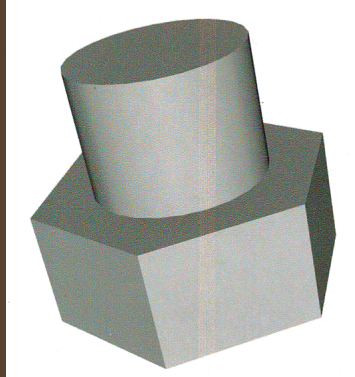


Artistic Style

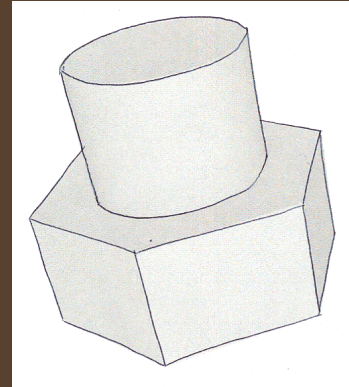
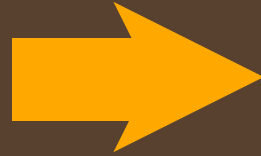


Prompt Image

Artistic Style

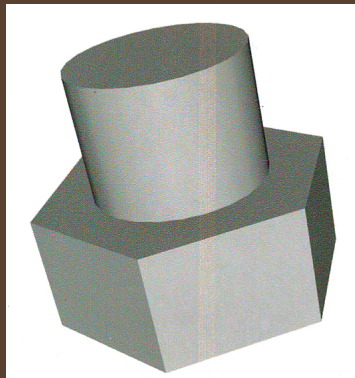


Prompt Image

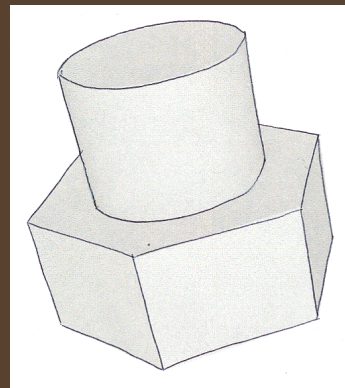
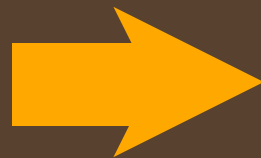


Solid, Smooth Feature Lines

Artistic Style

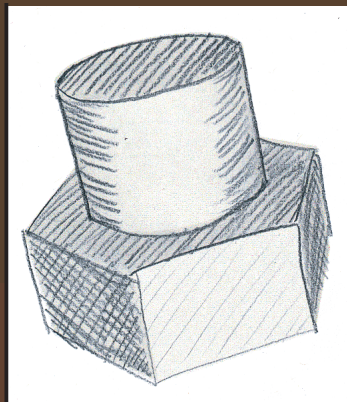


Prompt Image

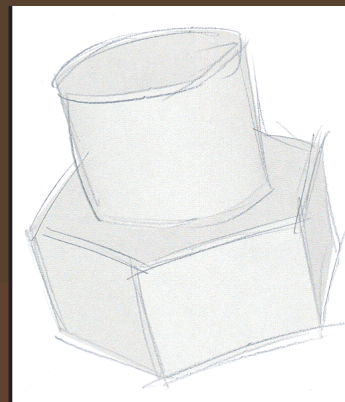


Solid, Smooth Feature Lines

Disallow:

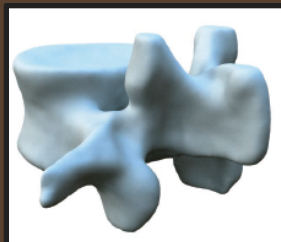


Hatching and Shading

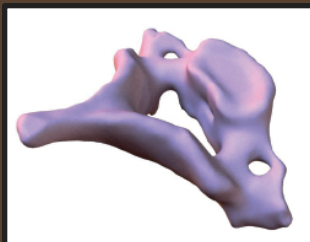


Sketchy Lines

Prompt Models



vertebra



cervical



tooth



femur



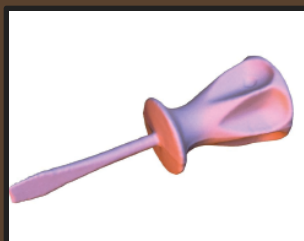
twoboxcloth



lumpcloth

Bones

Tablecloths



screwdriver



flange

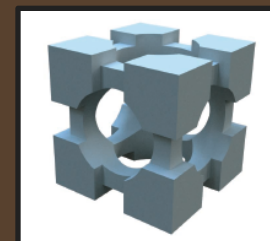


rockerarm

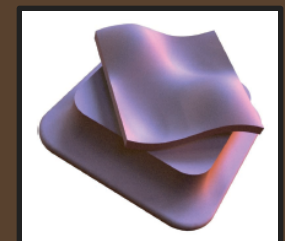


pulley

Mechanical Parts



cubehole



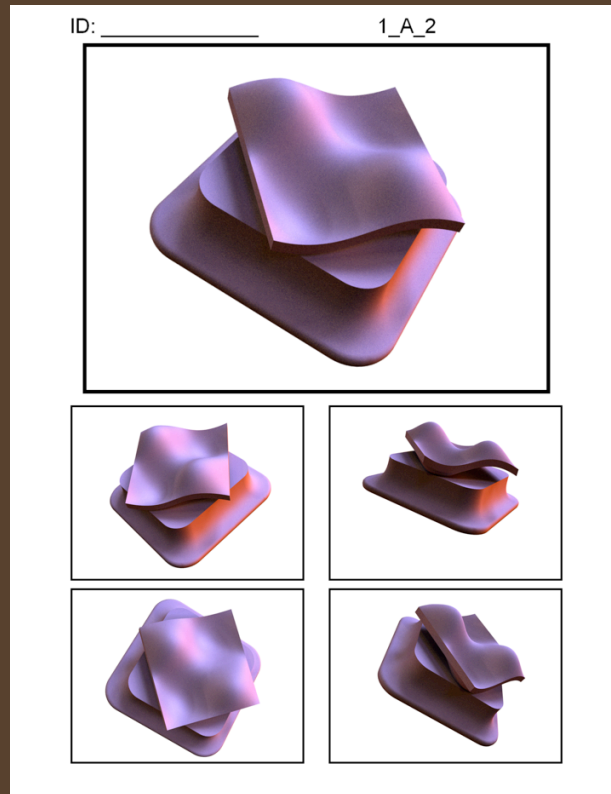
bumps

Abstract Shapes

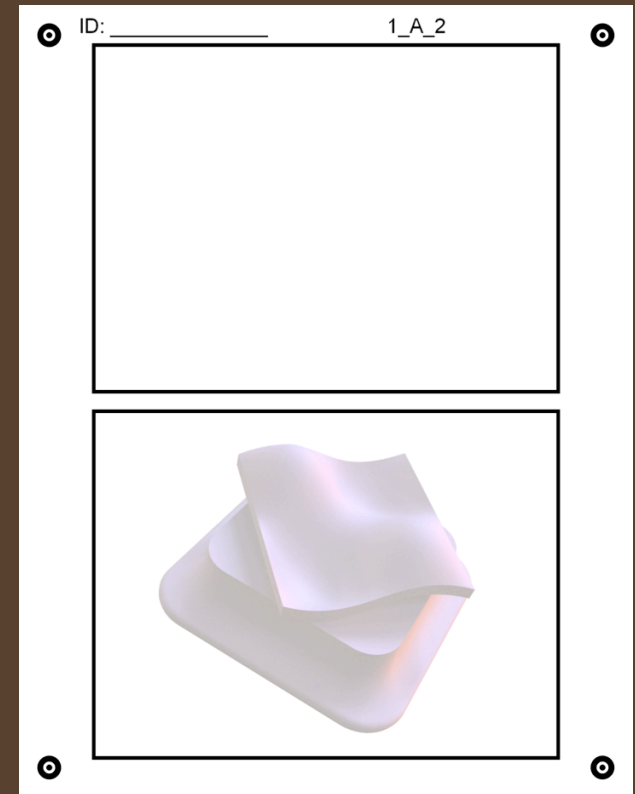


SIGGRAPH2008

Study Protocol



Prompt Page

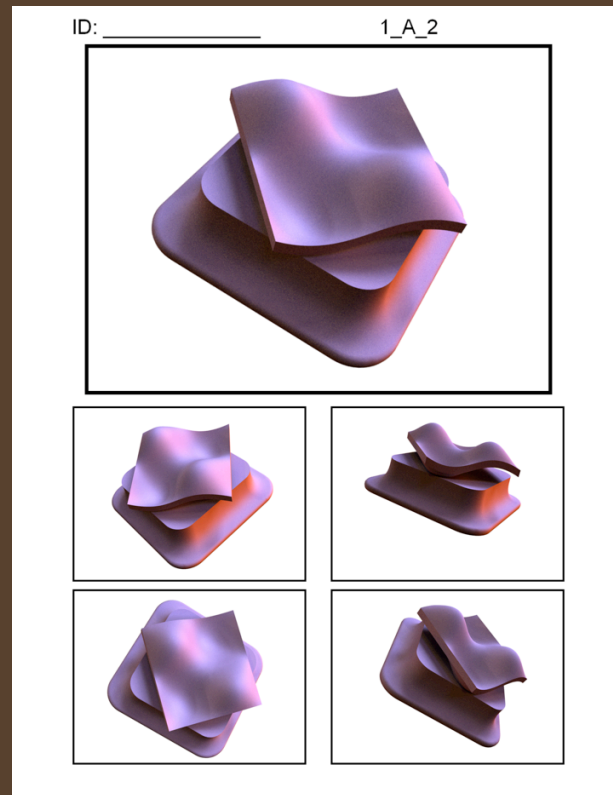


Drawing Page

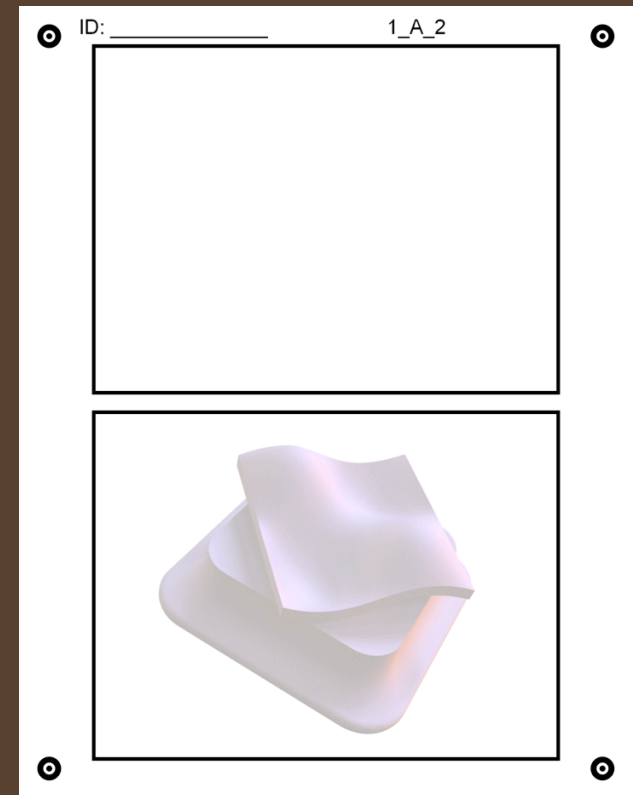


Study Protocol

Steps:



Prompt Page



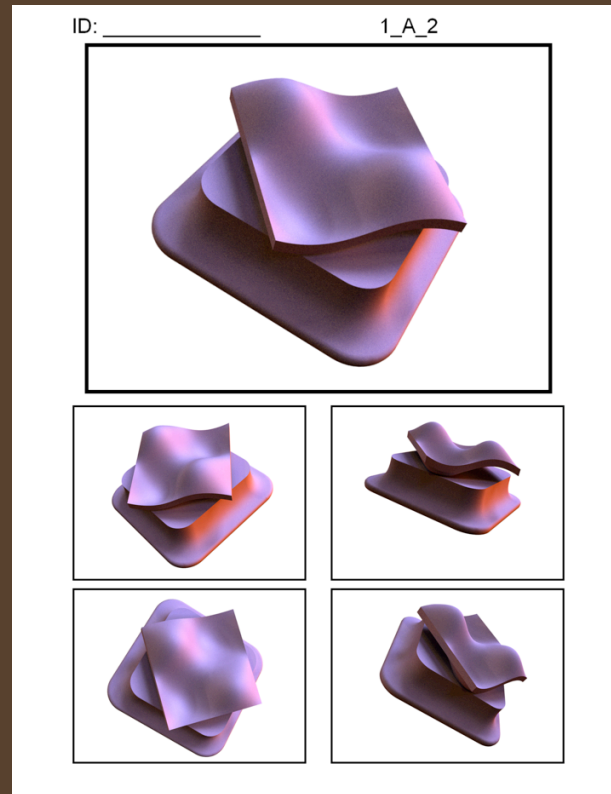
Drawing Page



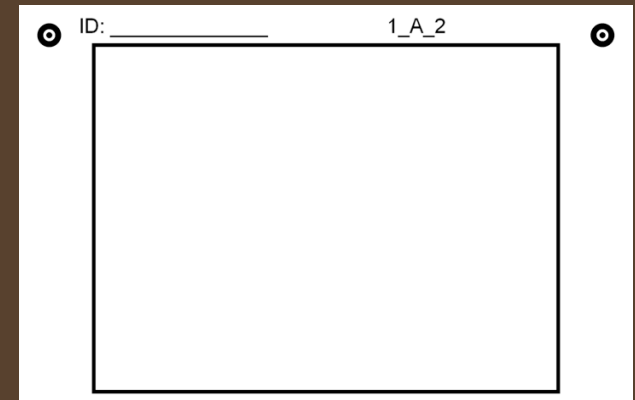
Study Protocol

Steps:

1. Fold



Prompt Page



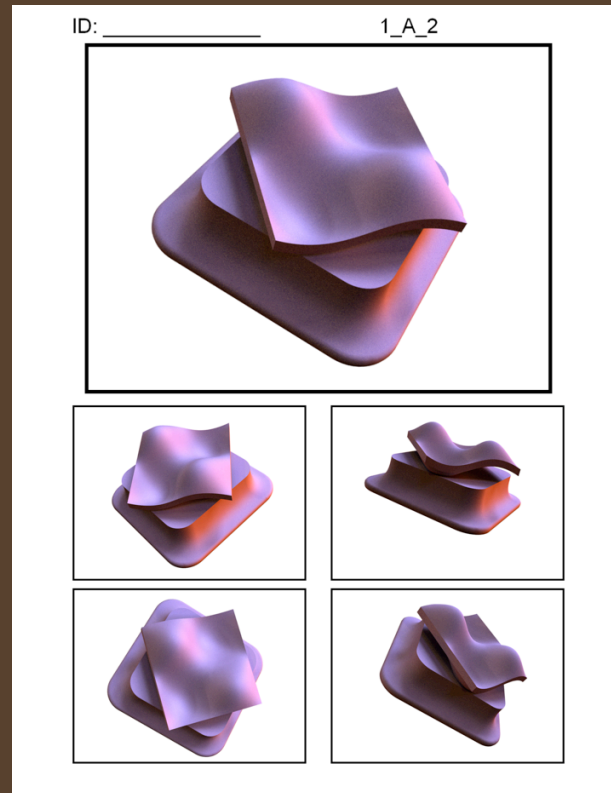
Drawing Page



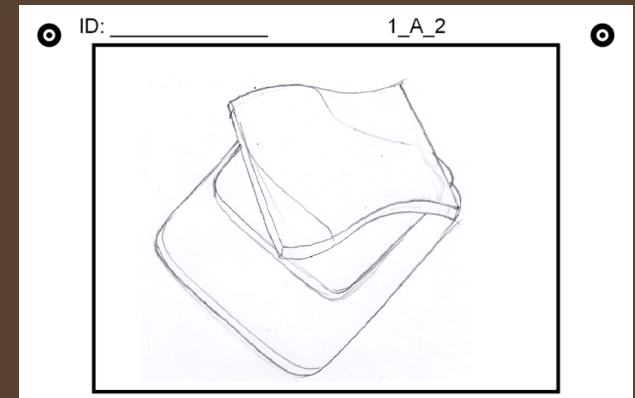
Study Protocol

Steps:

1. Fold
2. Draw



Prompt Page



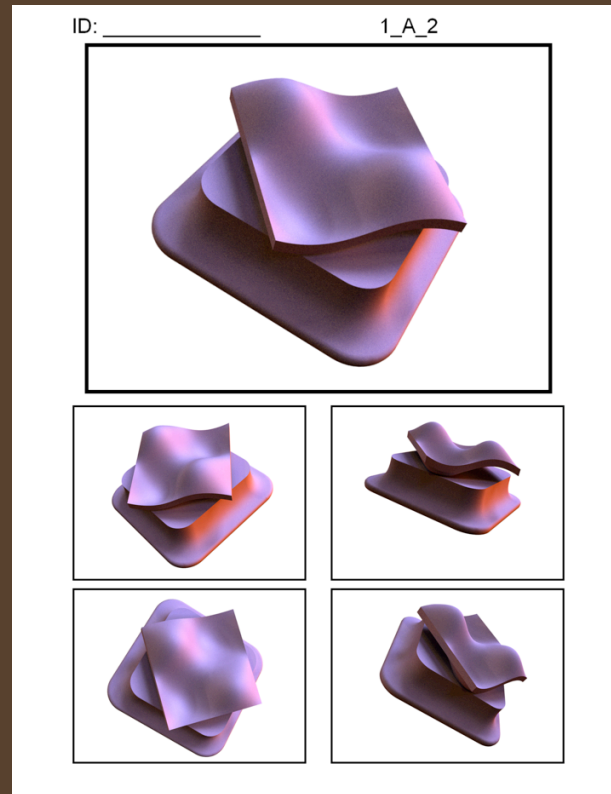
Drawing Page



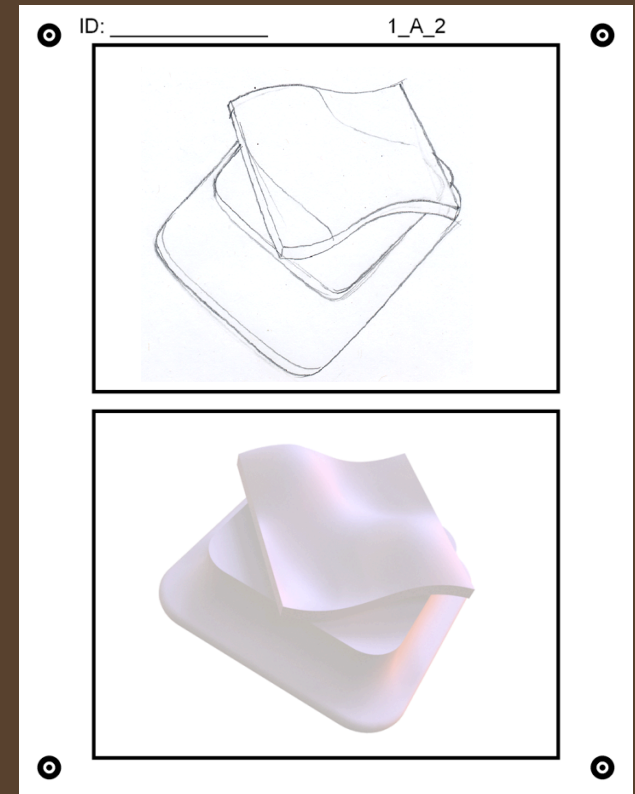
Study Protocol

Steps:

1. Fold
2. Draw
3. Unfold



Prompt Page



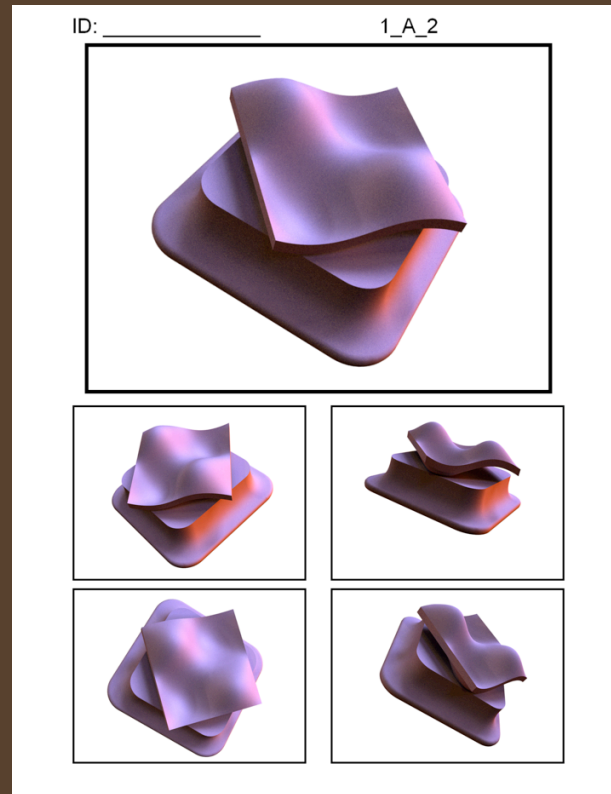
Drawing Page



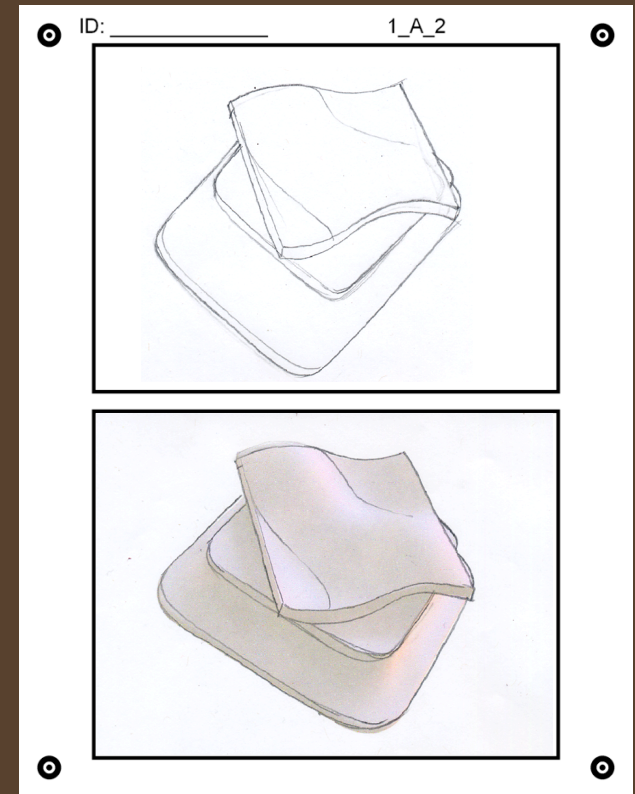
Study Protocol

Steps:

1. Fold
2. Draw
3. Unfold
4. Trace



Prompt Page



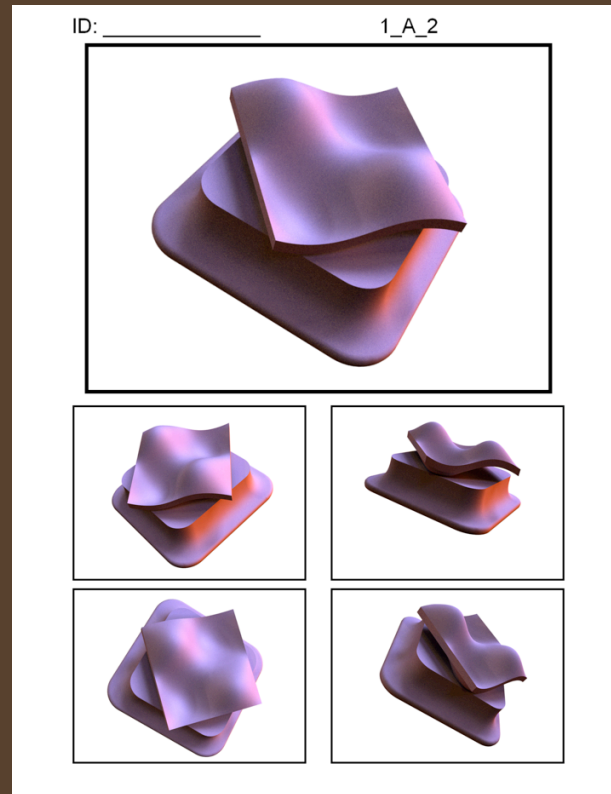
Drawing Page



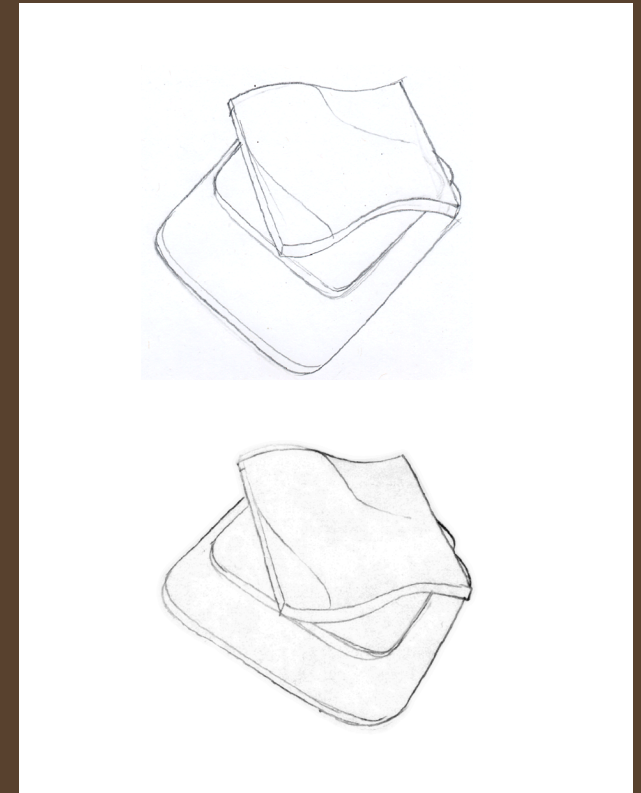
Study Protocol

Steps:

1. Fold
2. Draw
3. Unfold
4. Trace
5. Scan



Prompt Page

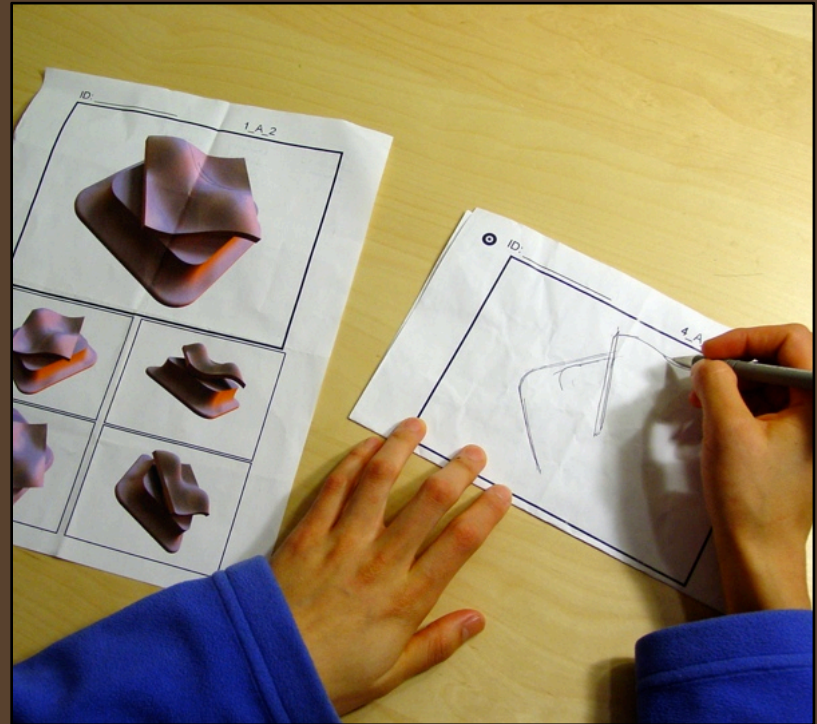


Drawing Page



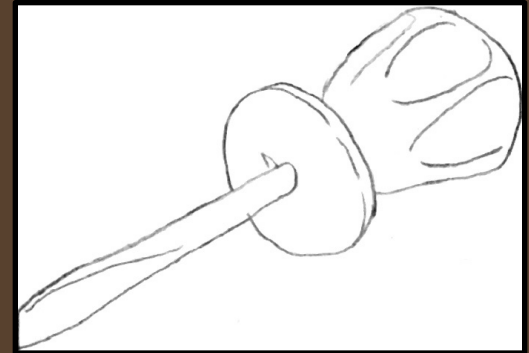
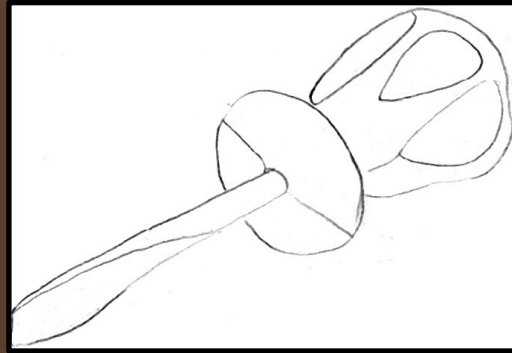
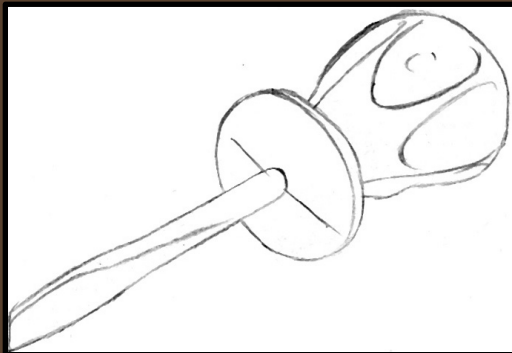
Protocol Trade-offs

- Benefits
 - Artists draw freely
 - Results are registered
- Limitations
 - Takes extra effort
 - Possible to change drawing



Collection Results

- 29 artists, art students and some professionals
- 208 drawings collected
- 170 “precise” drawings
 - Traced 90% of exterior silhouette within 1mm

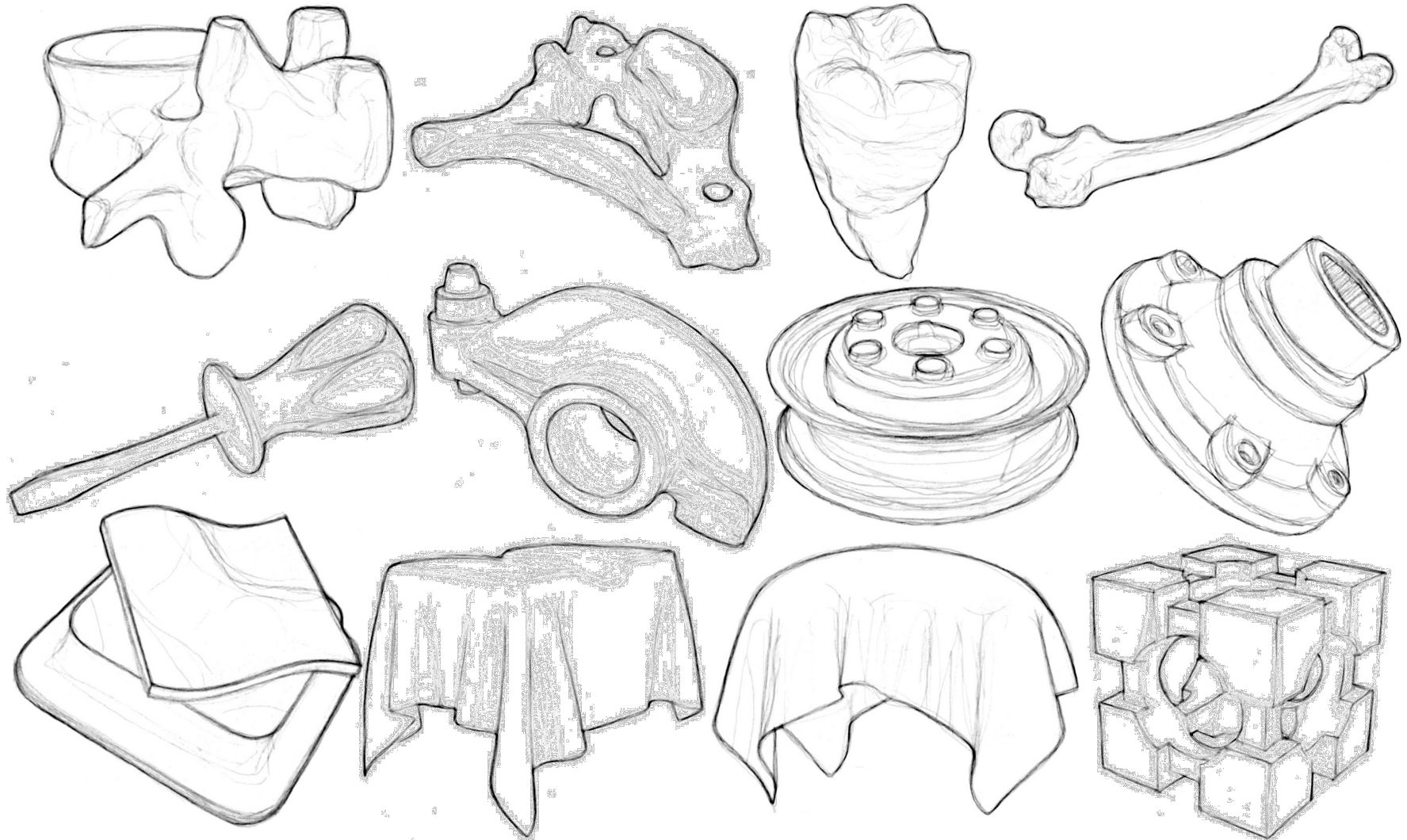


Overview

- Background
- Study Design
- Analysis and Results
 - How similar are the artists' drawings?
 - Can known CG lines explain artists' lines?
 - What about other possible definitions?
- Conclusion
- Dataset Demo

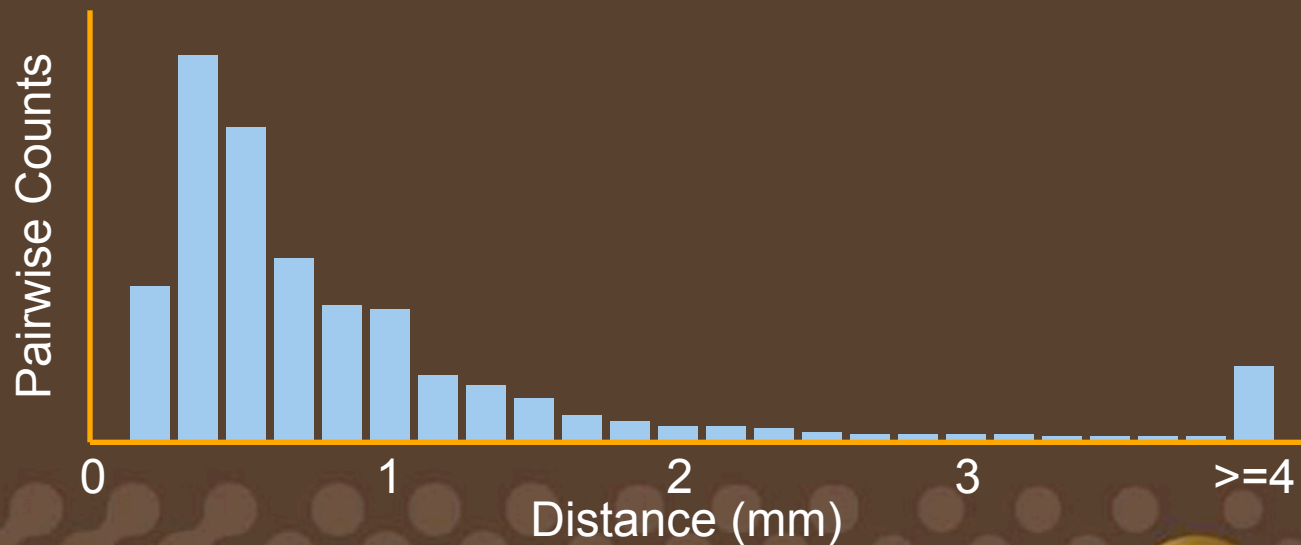


Averaged Drawings



Quantifying Similarity

- For each pixel, find closest pixel in the other drawings of the same prompt
- ~75% of distances fall within 1mm (6 pixels)

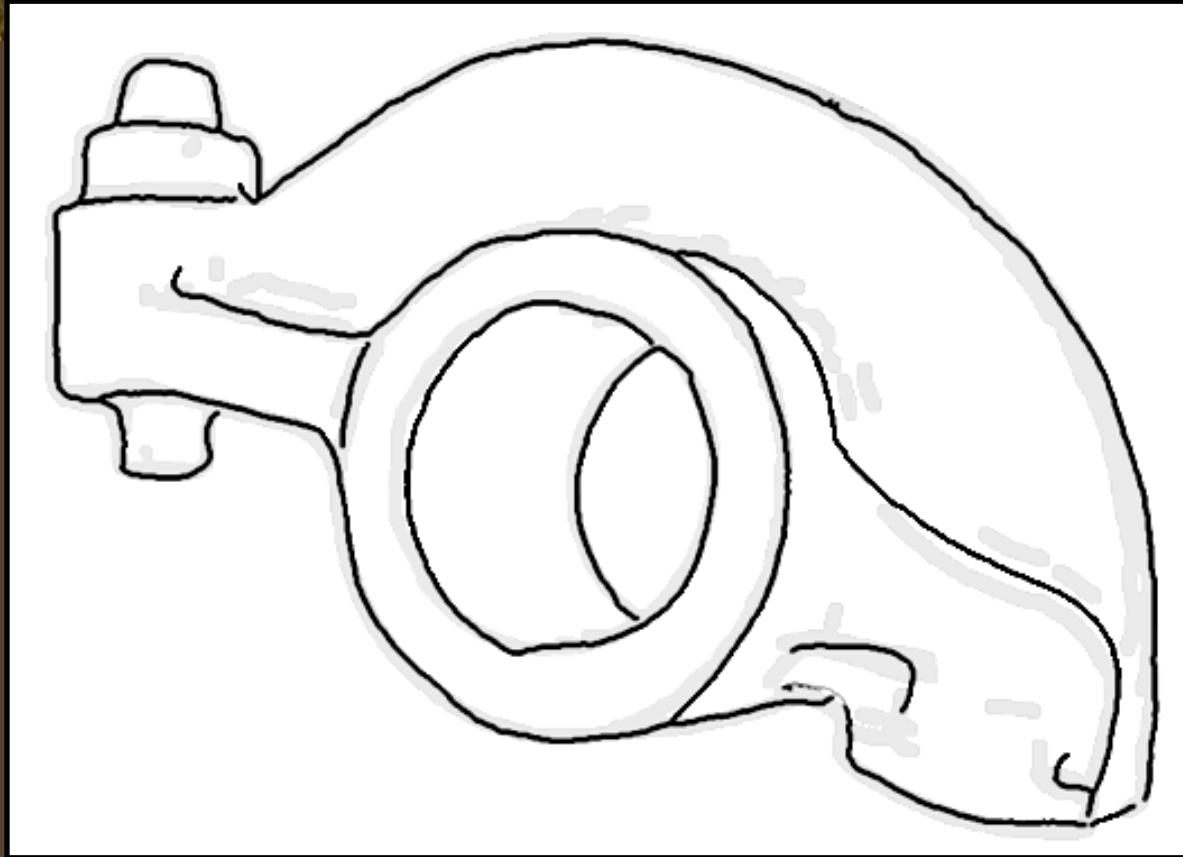


Describing with CG Lines

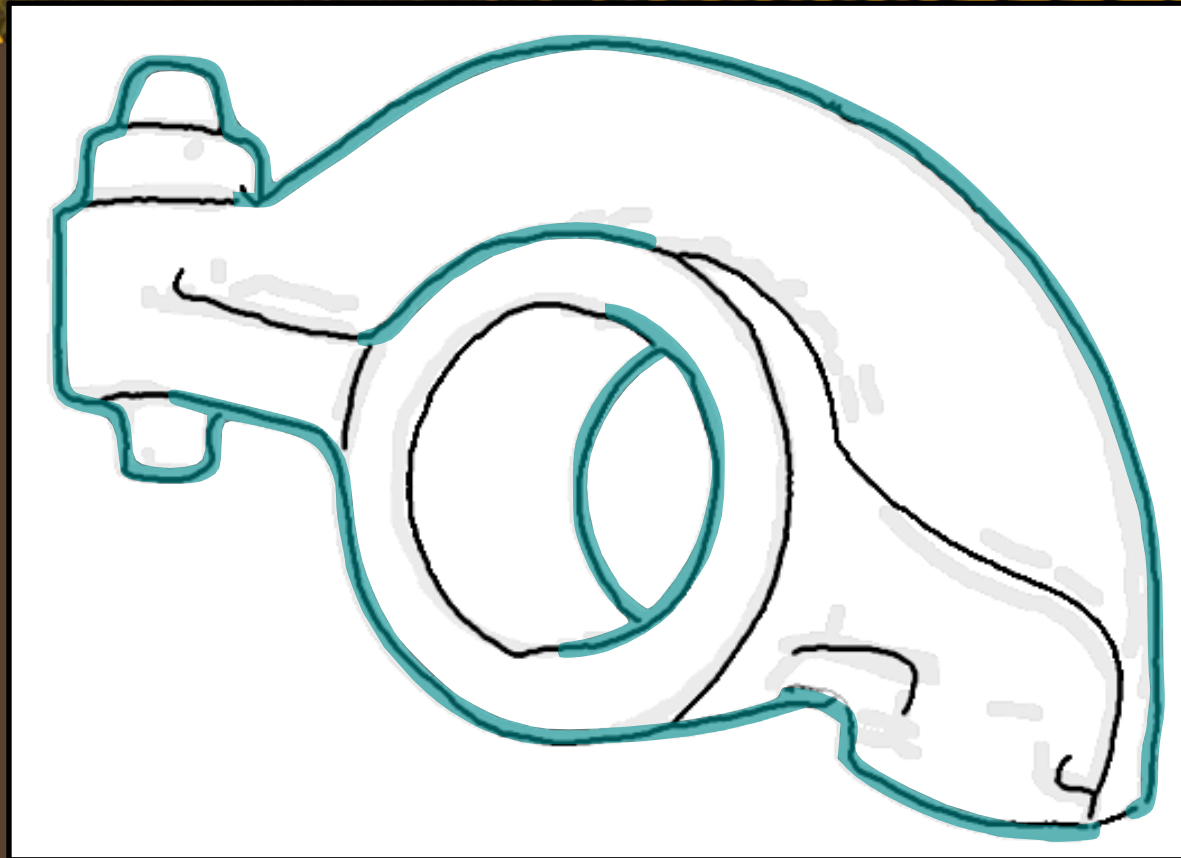
- Find fraction of artists' lines matched by CG lines
- Object-space lines
 - Occluding contours [Hertzmann 2000]
 - Suggestive contours [DeCarlo 2003]
 - Ridges and valleys [Ohtake 2004]
 - Apparent ridges [Judd 2007]
- Image-space lines
 - Image edges [Canny 1986]



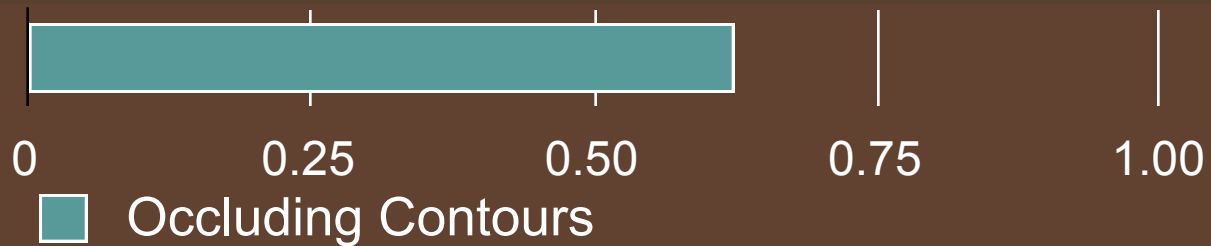
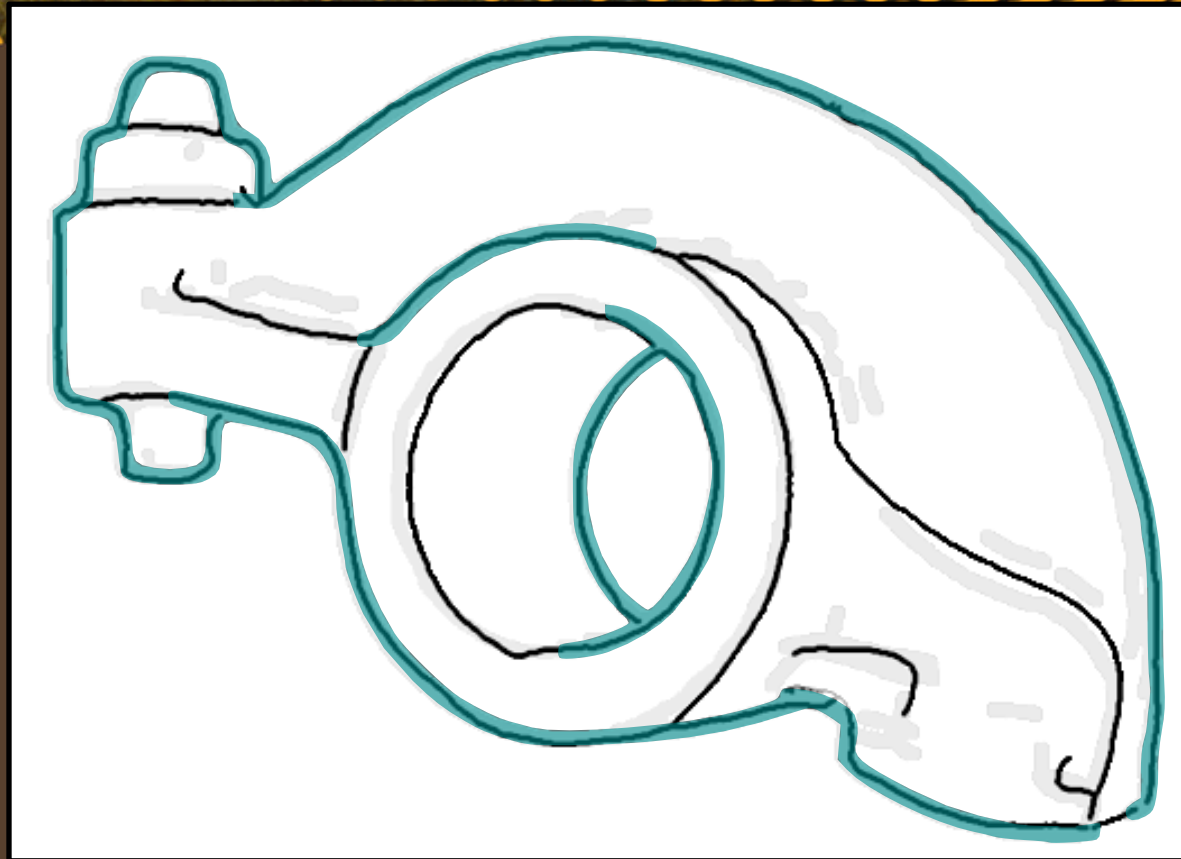
CG Line Matching Example



CG Line Matching Example



CG Line Matching Example



0

0.25

0.50

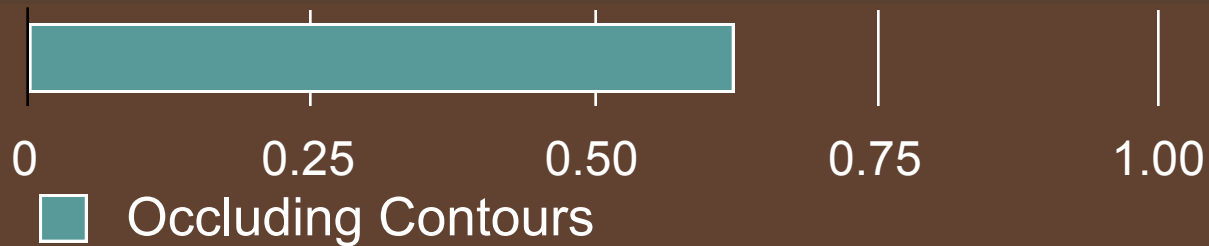
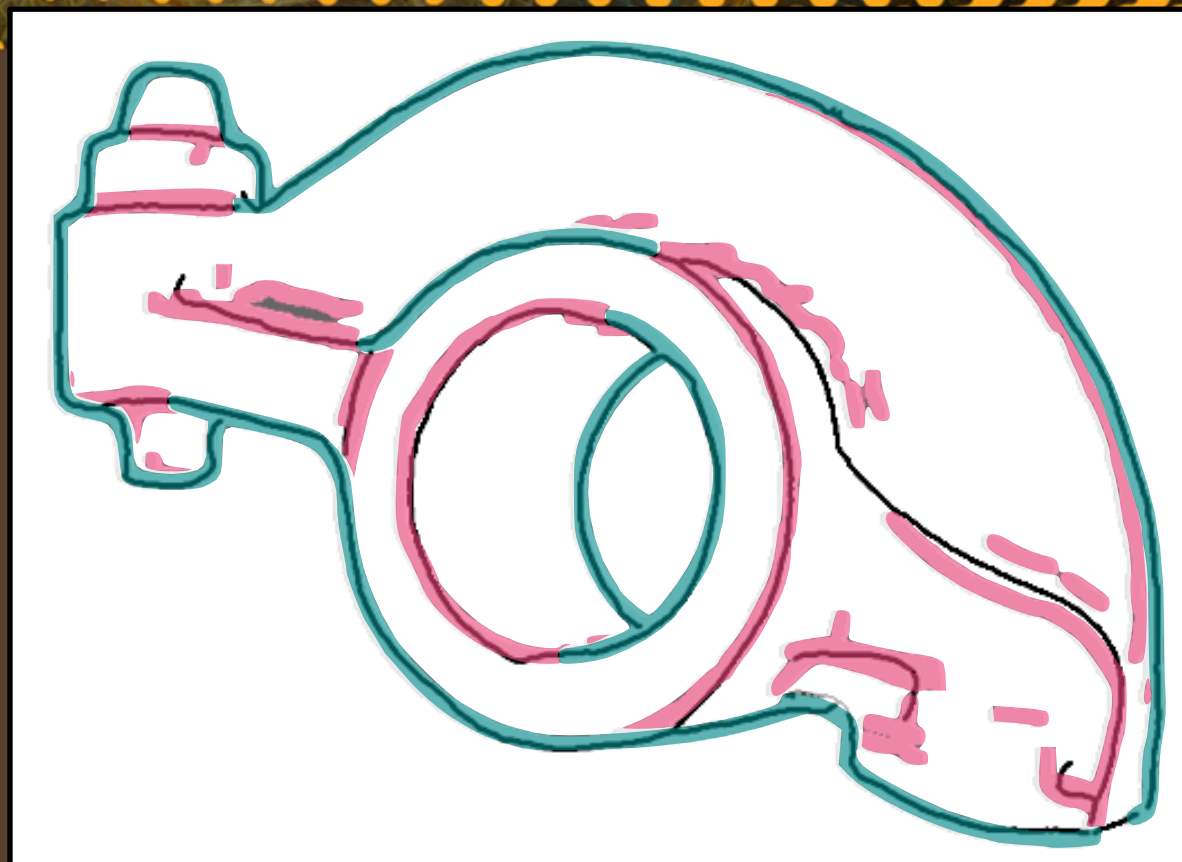
0.75

1.00

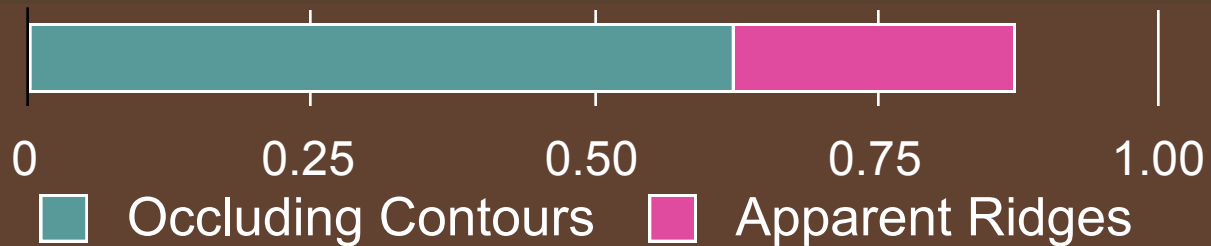
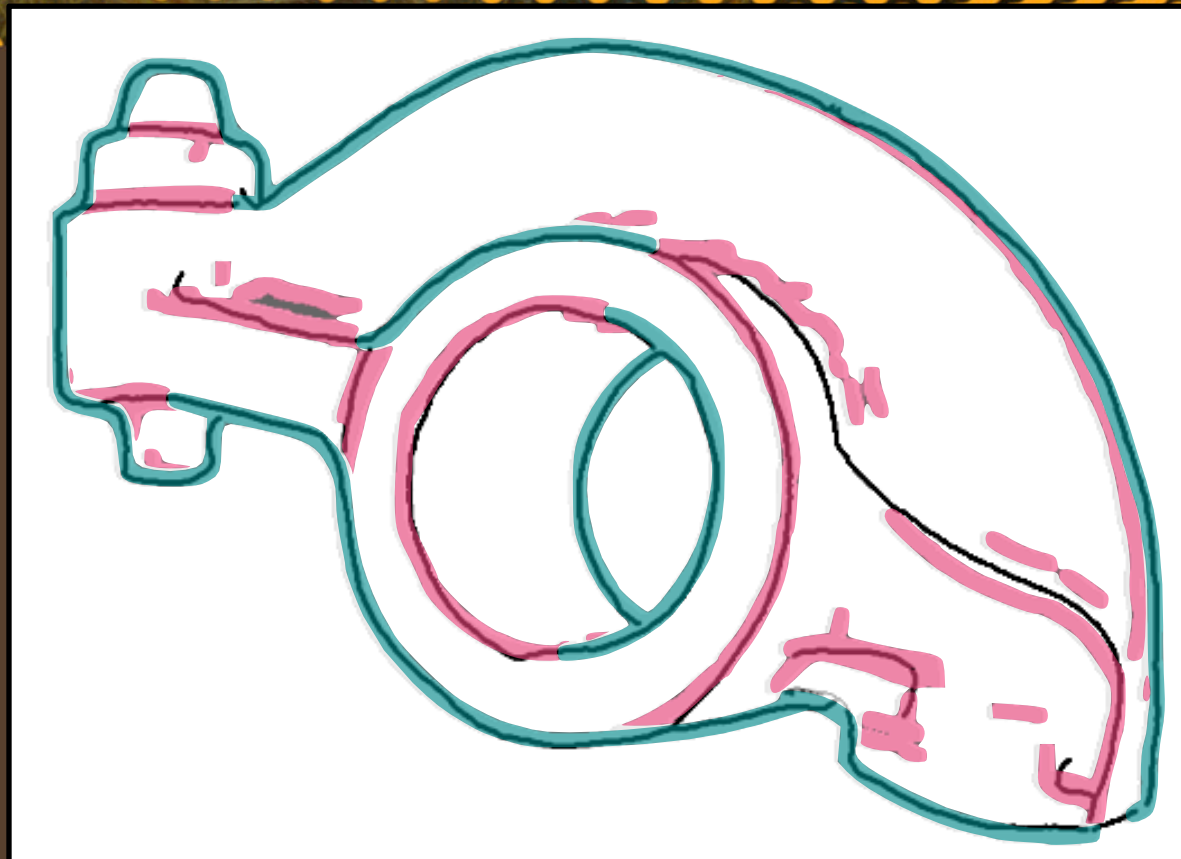


Occluding Contours

CG Line Matching Example

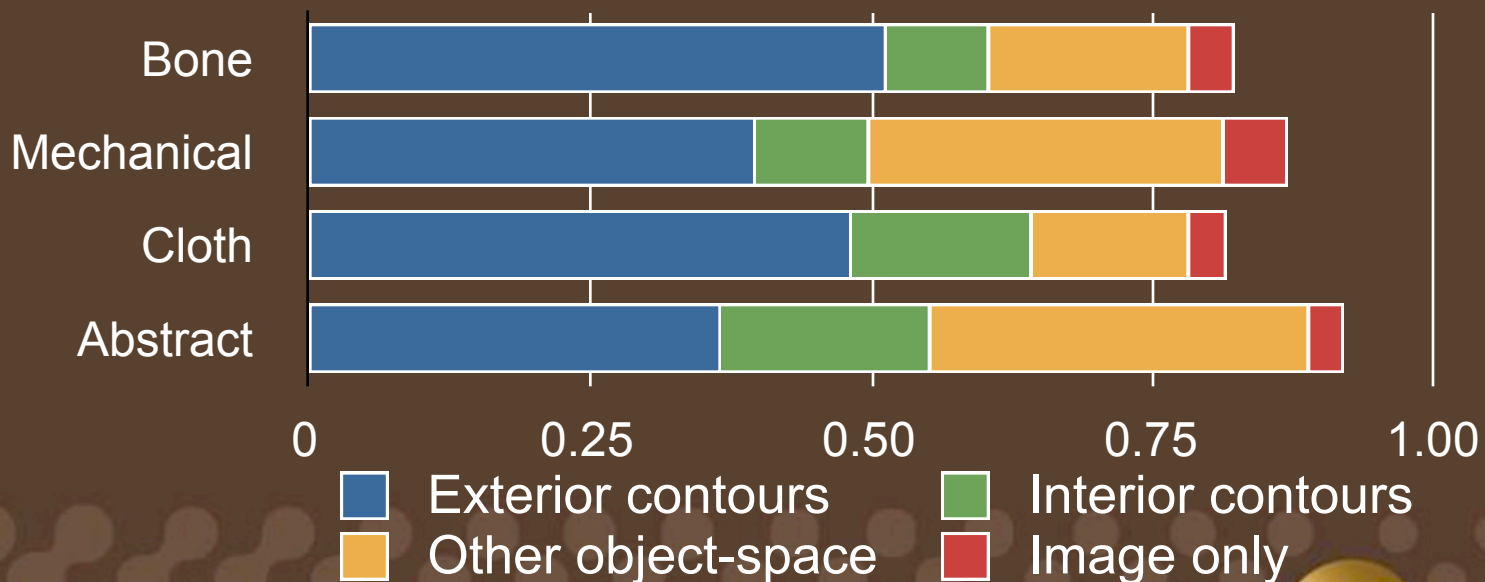


CG Line Matching Example



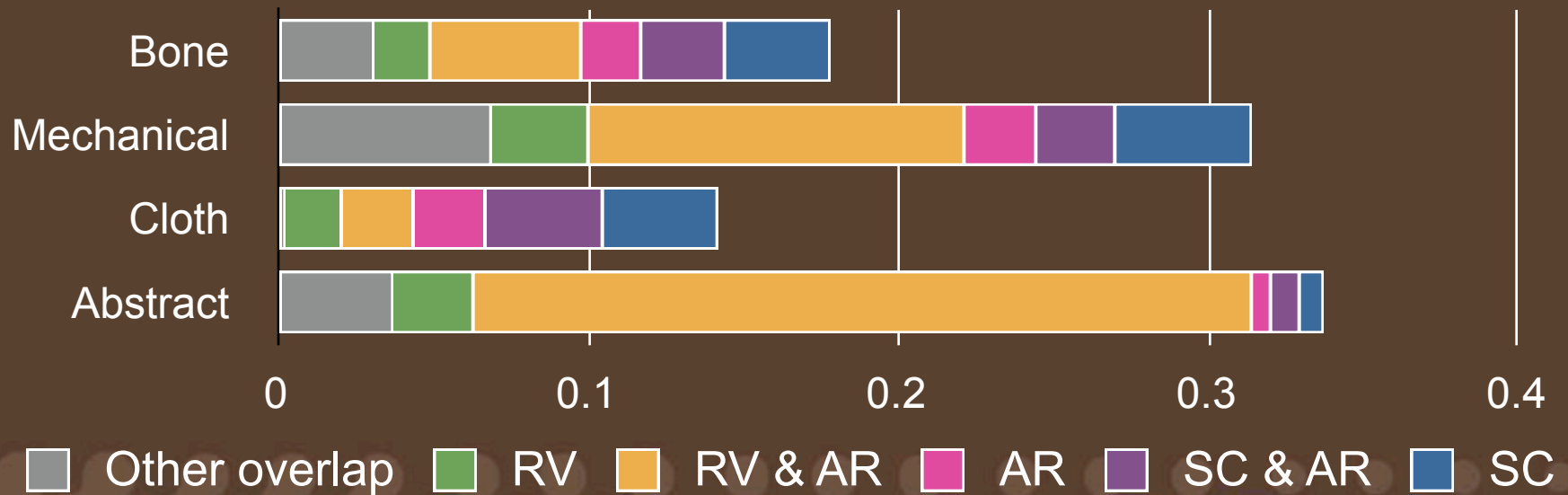
Categorization of Lines

- Contours explain 50-65% of all lines
- Other object-space lines explain 15-30%
- Image features alone explain ~5%



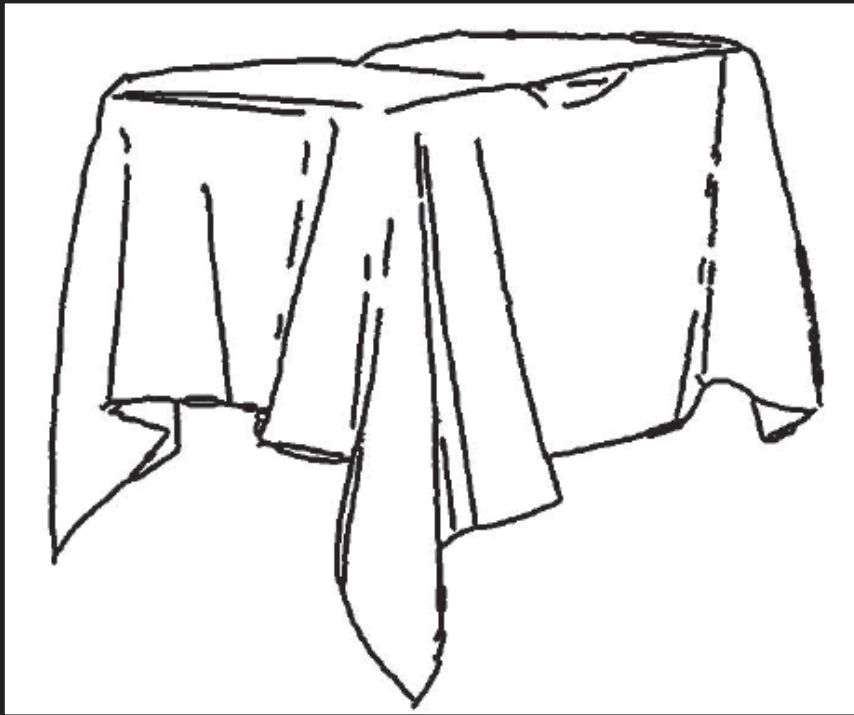
Other Object-Space Lines

- Ridge and valley lines very important
- Suggestive contours important for smooth models
- No definition dominates

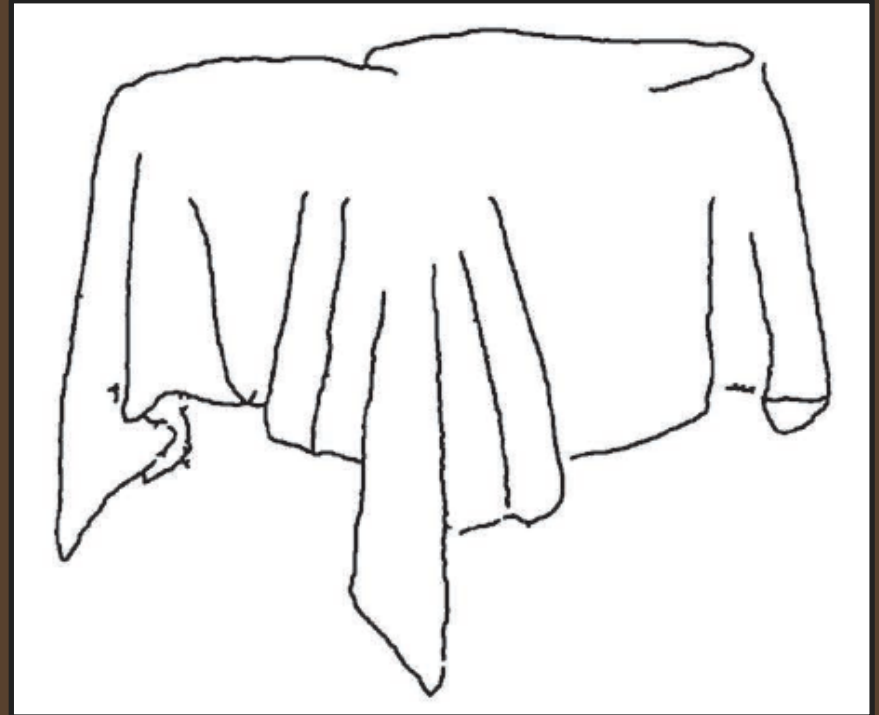


Artistic Variation

Artist A

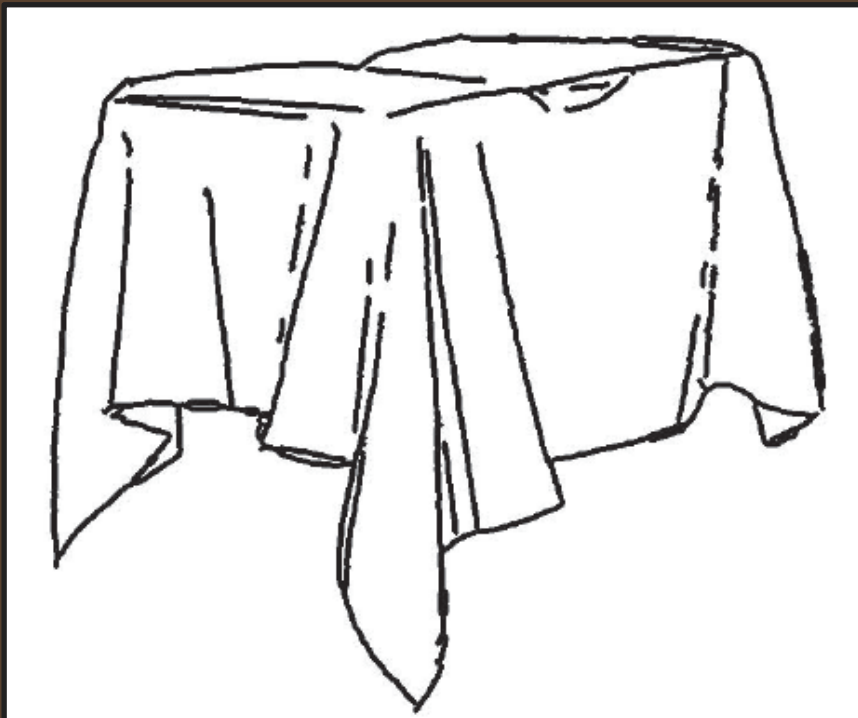


Artist B

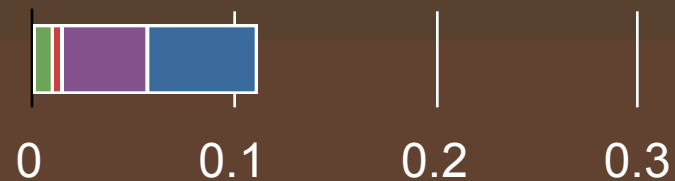
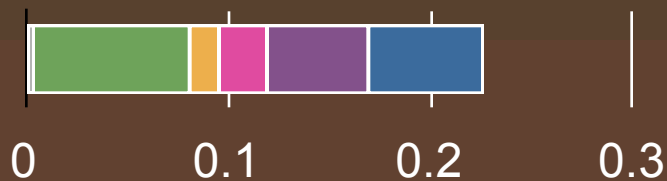
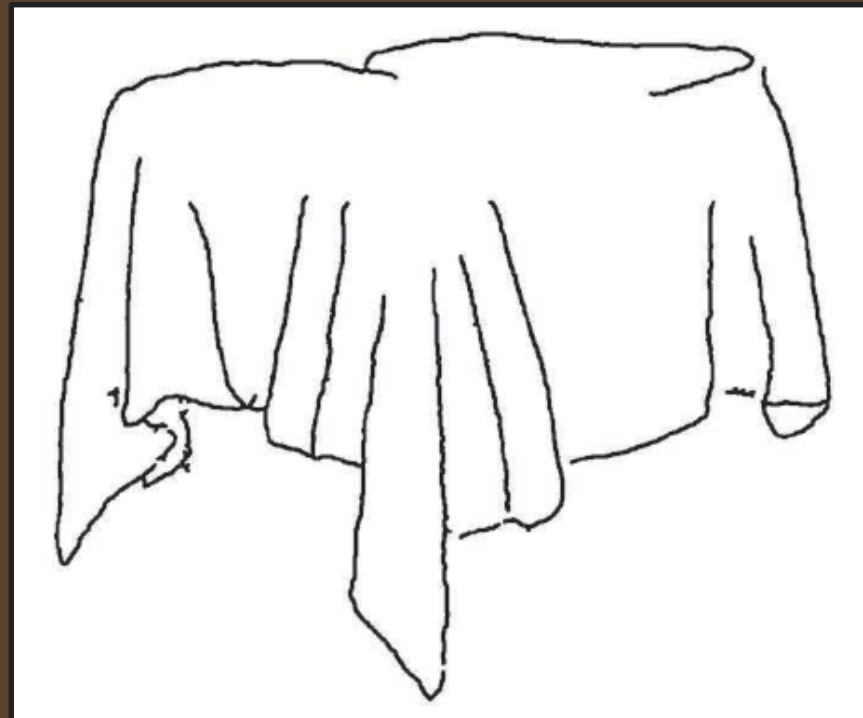


Artistic Variation

Artist A



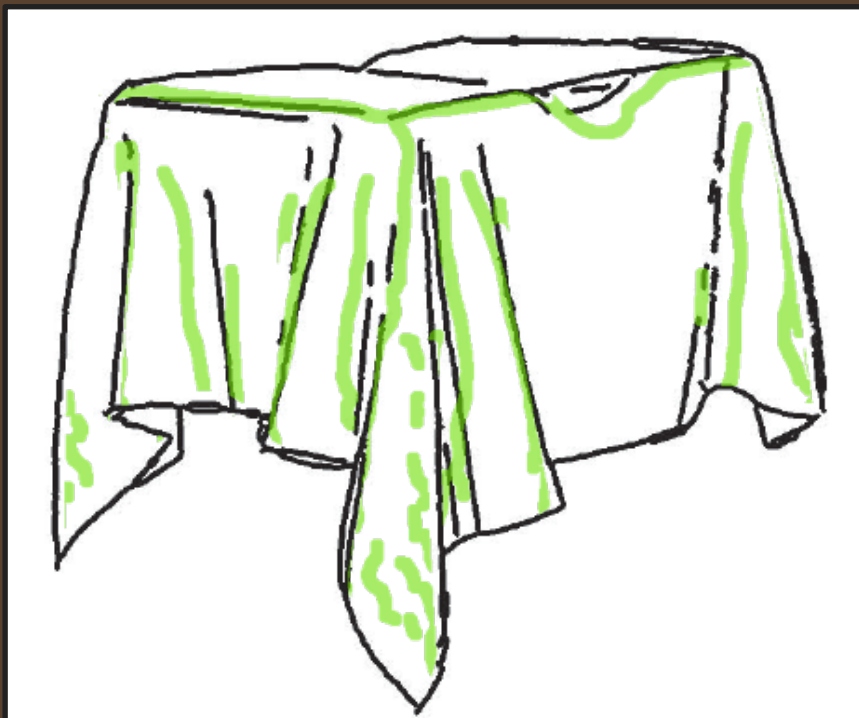
Artist B



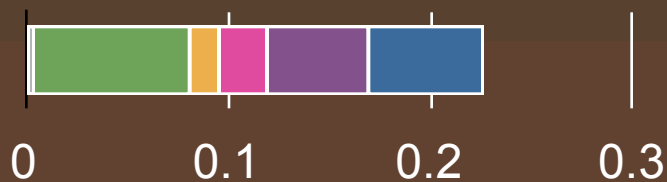
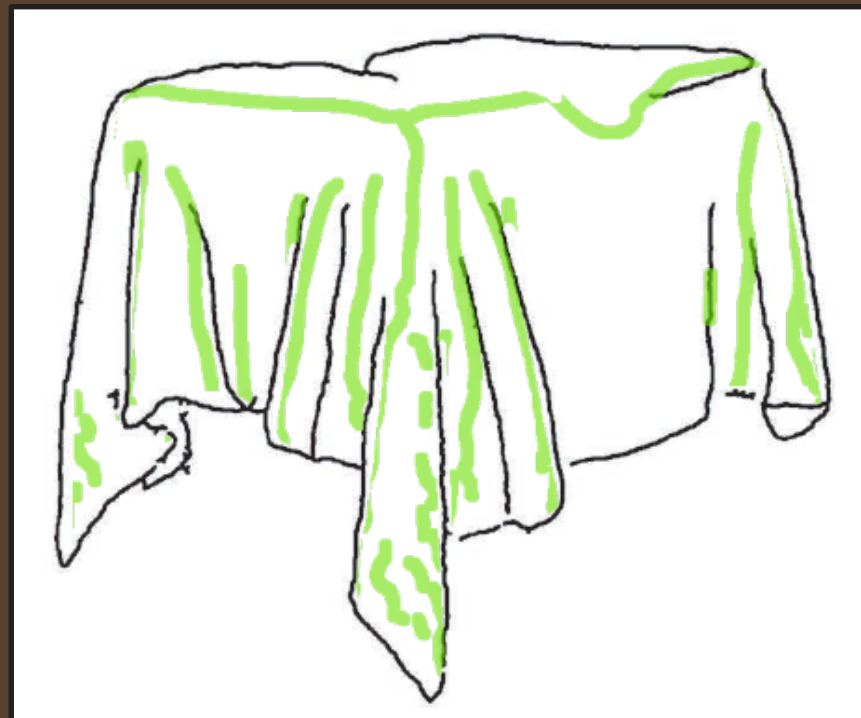
Other Overlap RV RV & AR AR SC & AR SC

Artistic Variation

Artist A



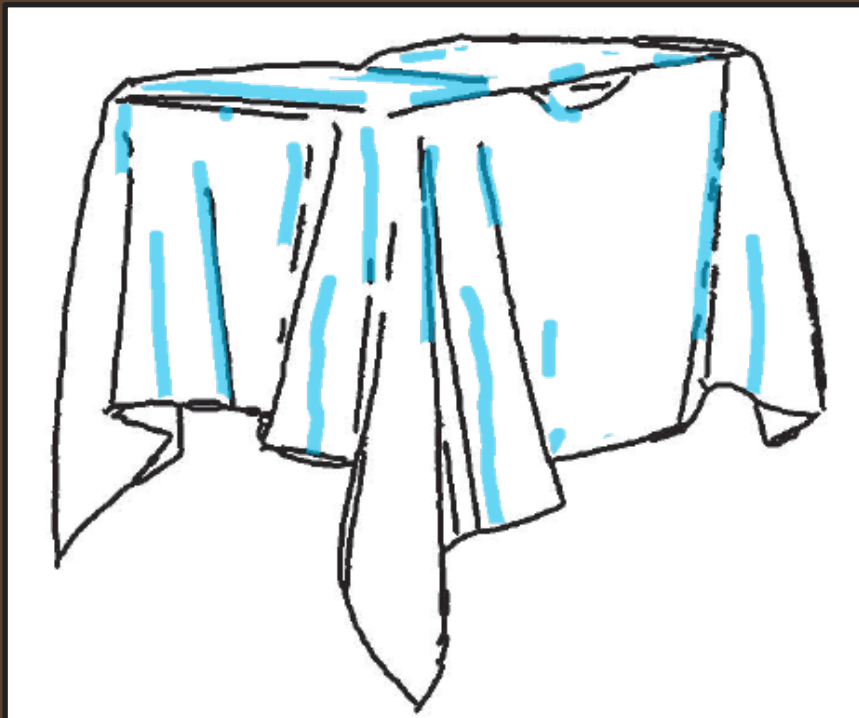
Artist B



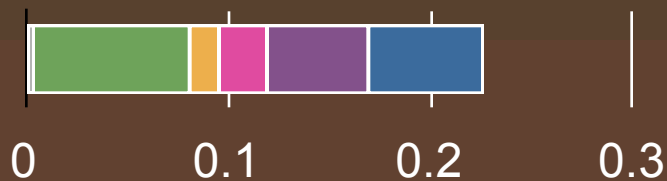
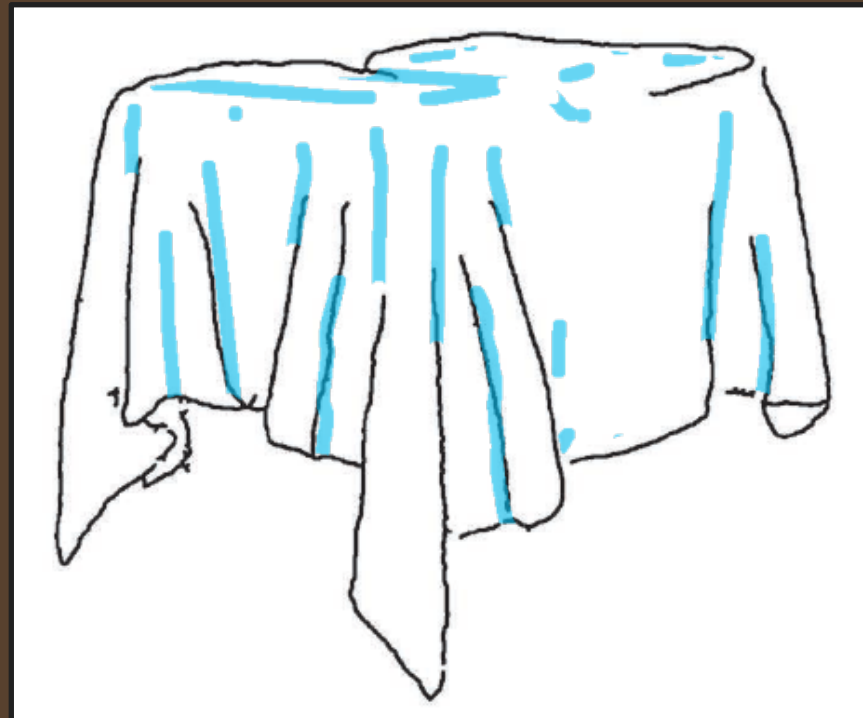
Other Overlap RV RV & AR AR SC & AR SC

Artistic Variation

Artist A



Artist B



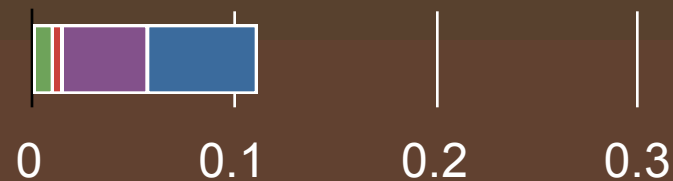
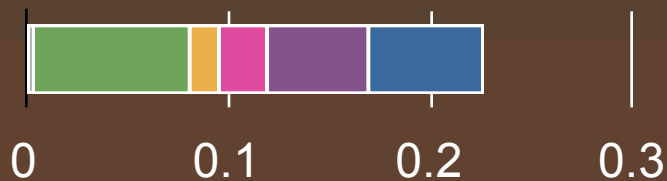
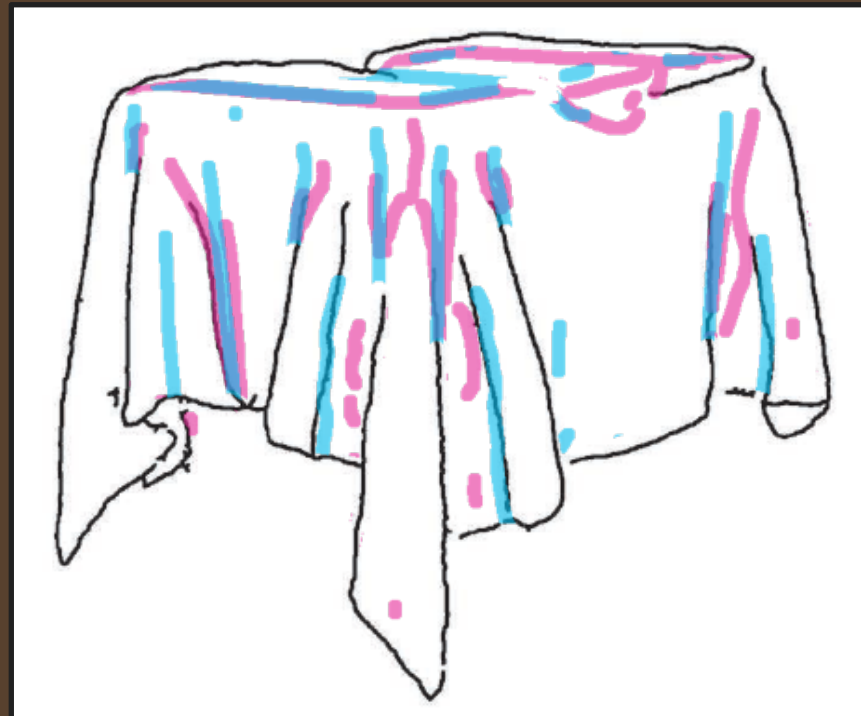
Other Overlap RV RV & AR AR SC & AR SC

Artistic Variation

Artist A



Artist B



Other Overlap RV RV & AR AR SC & AR SC

Results for Known Lines

- Can confidently explain 80-90% of lines with known definitions
 - Exact coverage values vary with thresholds
 - Qualitative results remain the same
- What about other possible definitions?



Examining Local Features

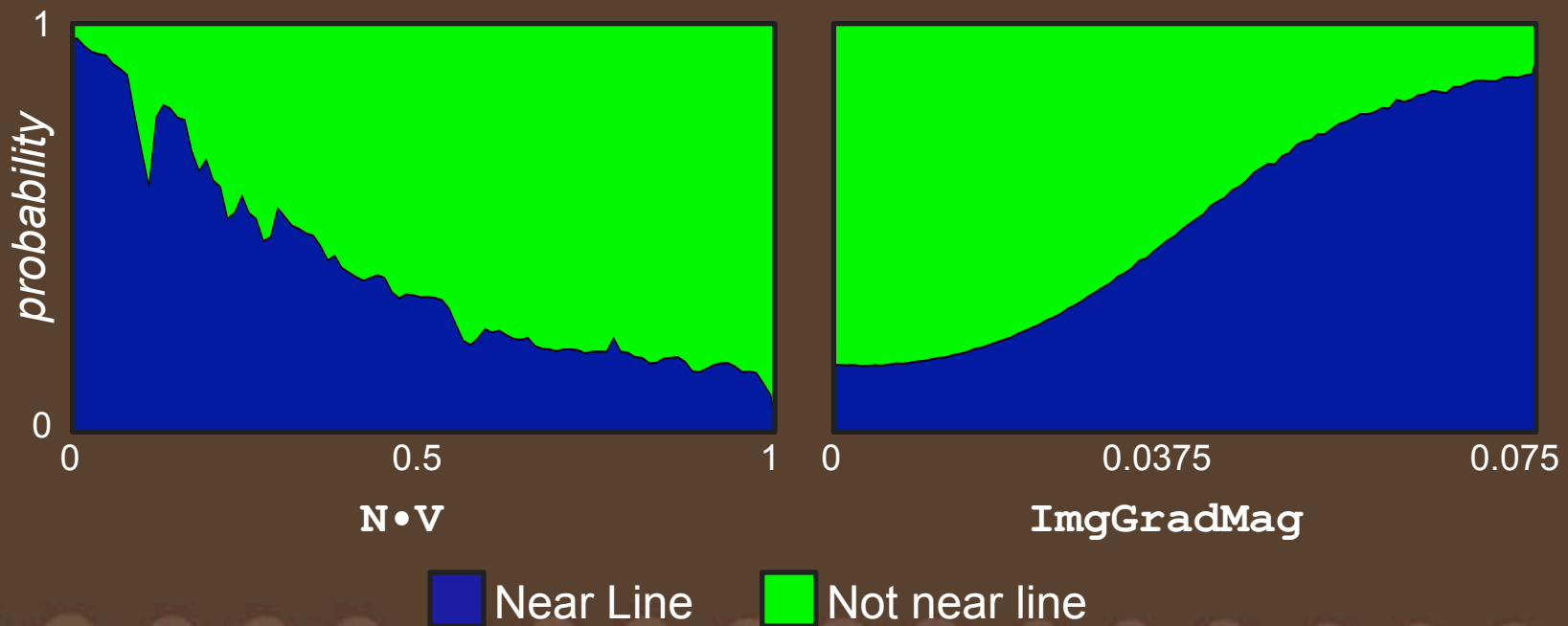
- All CG line definitions based on 1-2 local features
- Could we combine more?
- Which are most important?

Image-Space	Object-Space	
	View-Dependent	View-Independent
<code>ImgGradMag</code>	<code>N · V</code>	<code>SurfMaxCurv</code>
<code>ImgMaxCurv</code>	<code>ViewDepCurv</code>	<code>SurfMaxCurvDeriv</code>
<code>ImgMinCurv</code>	<code>ViewDepCurvDeriv</code>	<code>SurfMinCurv</code>
<code>ImgLuminance</code>	<code>RadialCurv</code>	<code>SurfMeanCurv</code>
	<code>RadialCurvDeriv</code>	<code>SurfGaussianCurv</code>
	<code>RadialTorsion</code>	



Individual Local Features

- Compare pixels near artists' lines to remainder

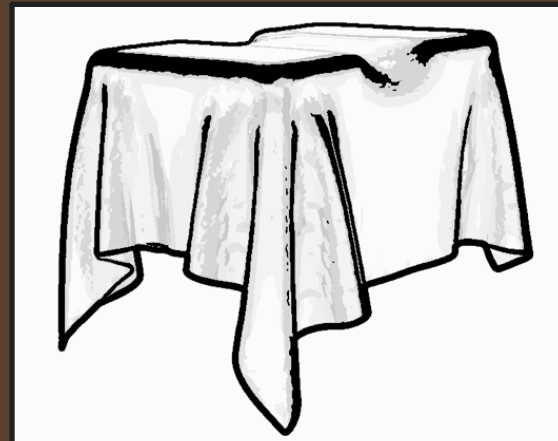


Features in Combination

Regression Tree Model:

```
ImgGradMag > 2433.08
| ImgGradMag > 4706.19
| | 0.181
| | 0.0341
| RadialCurvDeriv > 0.02
| | ViewDepCurvDeriv > 0.044
| | | 0.0455
| | | 0.0175
| | SurfGaussianCurv > -0.004
| | | ViewDepCurv > 0.076
| | | | N dot V > 0.782
| | | | | 0.0113
| | | | | 0.0252
| | | | SurfMaxCurvDeriv > 0.014
| | | | | SurfMinCurv > 0.022
| | | | | | 0.0044
| | | | | | 0.0125
| | | | | | 0.0023
...

```



Predicted Probability



Artists' Average

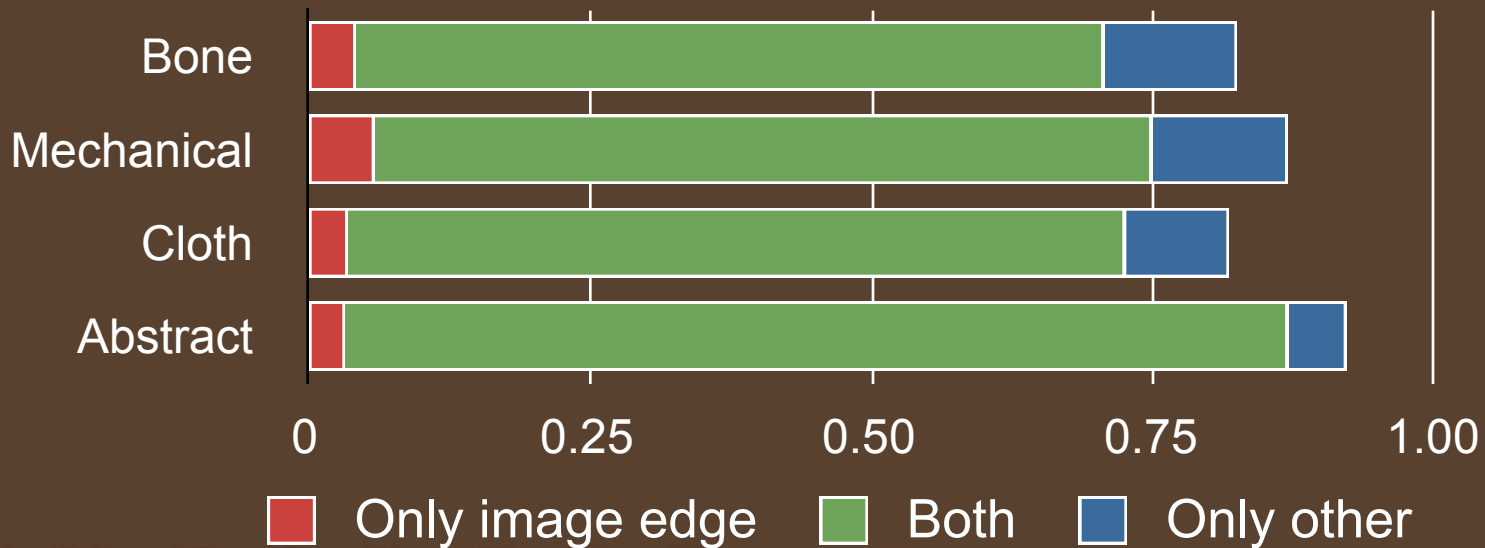
Feature Importance

- Estimated via Random Forests [Breimann 2001]
- Overall, **image gradient** is most important
- Importance by category:
 - Image space
 - View-dependent object space
 - View-independent object space



Image Edges vs. Others

- Most lines match both image edge and other
- Image edges best single predictor of placement



Overview

- Background
- Study Design
- Analysis and Results
- Conclusion
 - Summary of Results
 - Future Work
- Dataset Demo



Summary of Results

- Artists' lines overlap heavily with other artists'
- Best predictors
 - Image edges: best coverage
 - Occluding contours: most commonly drawn
- All CG lines together explain 80-90% of all lines

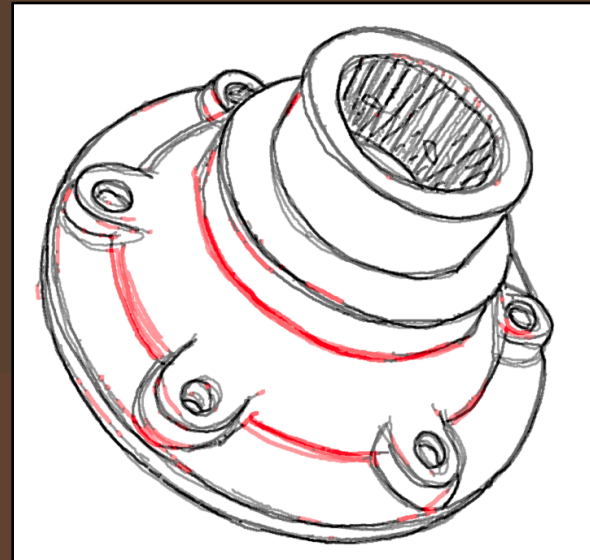
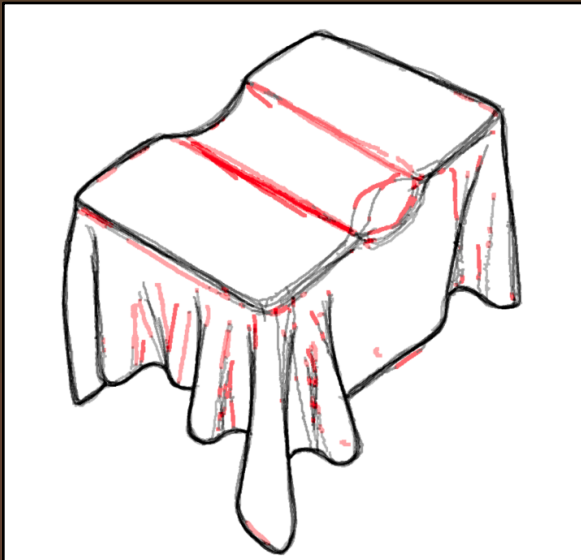


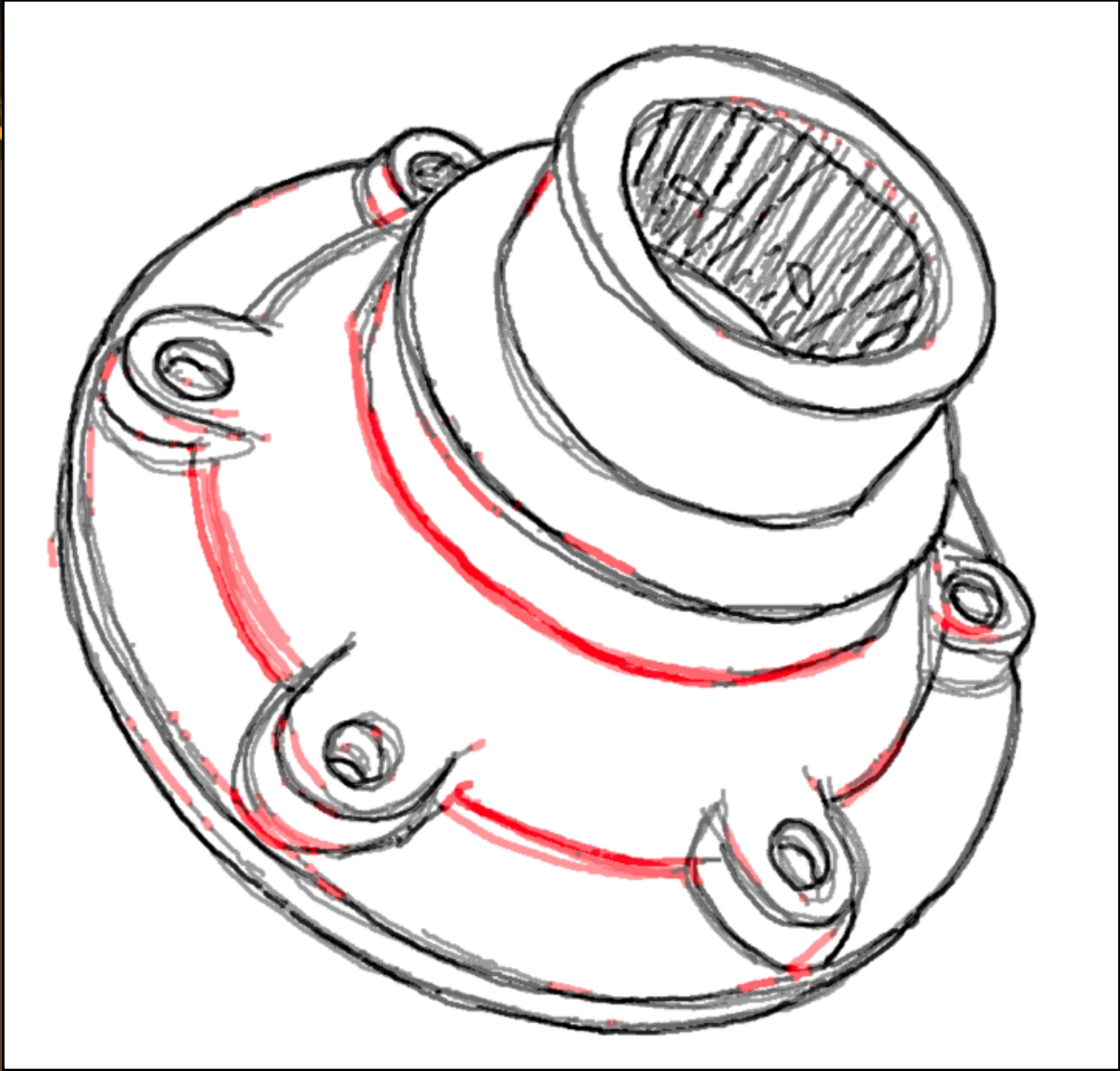
Unexplained Lines

- How to explain remaining lines?
 - Artistic license
 - Need better local feature definitions
 - Choices based on global features

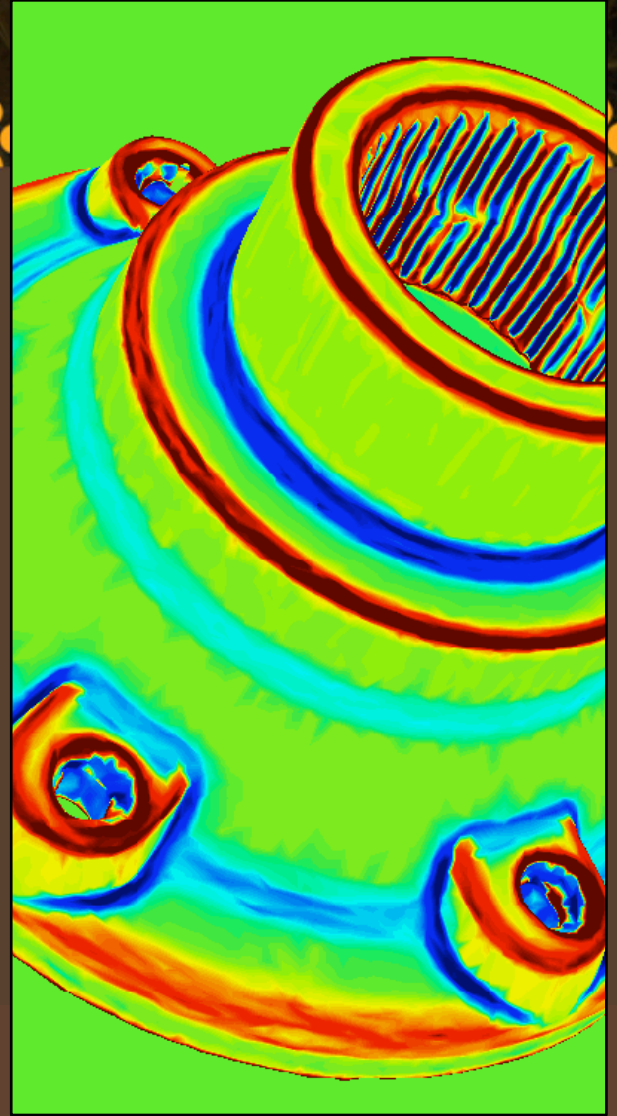
Unexplained Lines

- How to explain remaining lines?
 - Artistic license
 - Need better local feature definitions
 - Choices based on global features

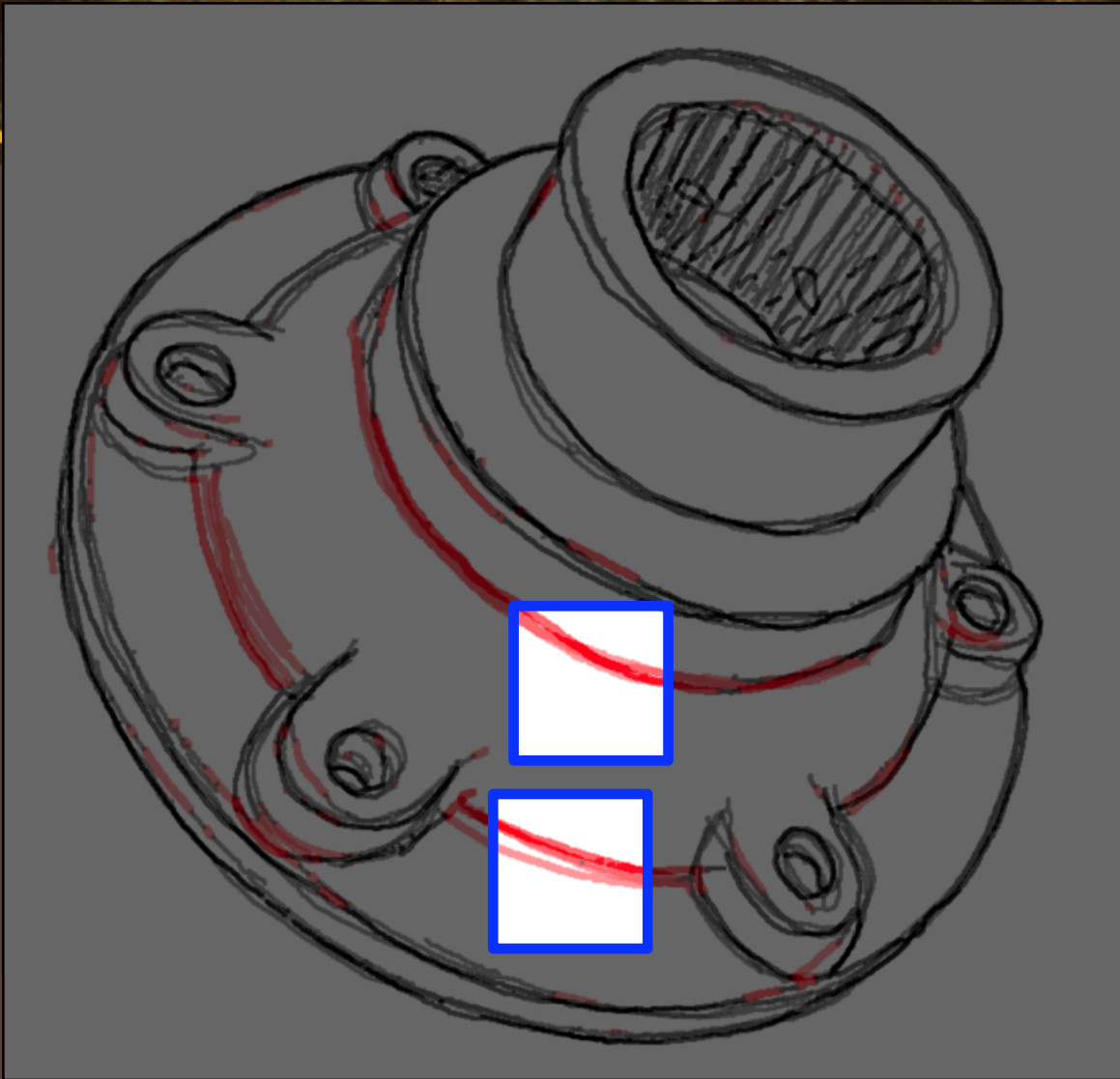




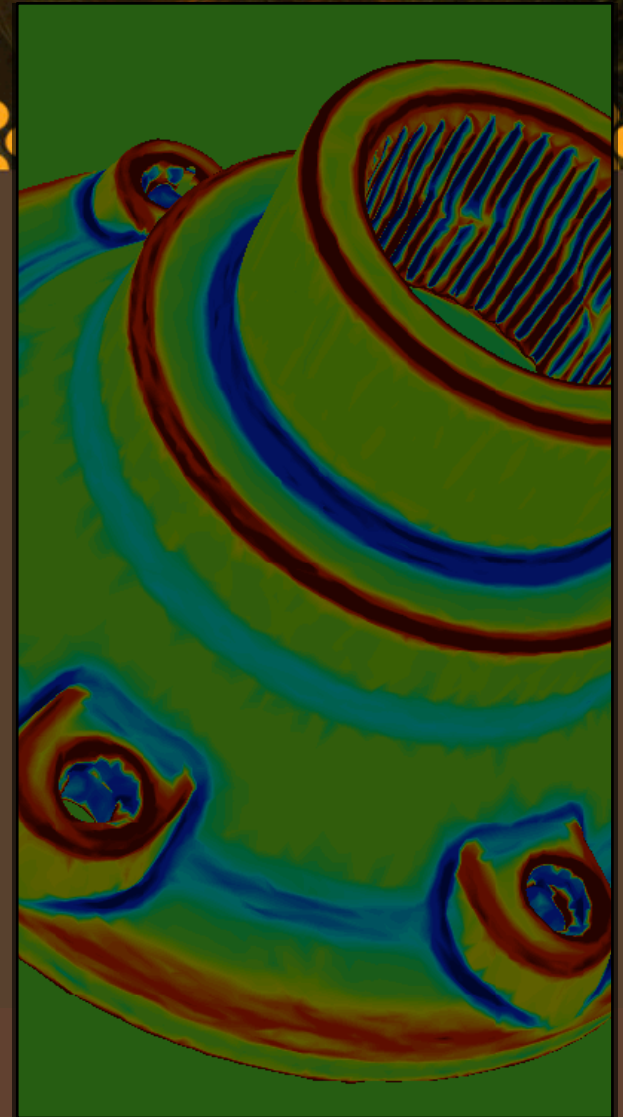
Composite Drawing



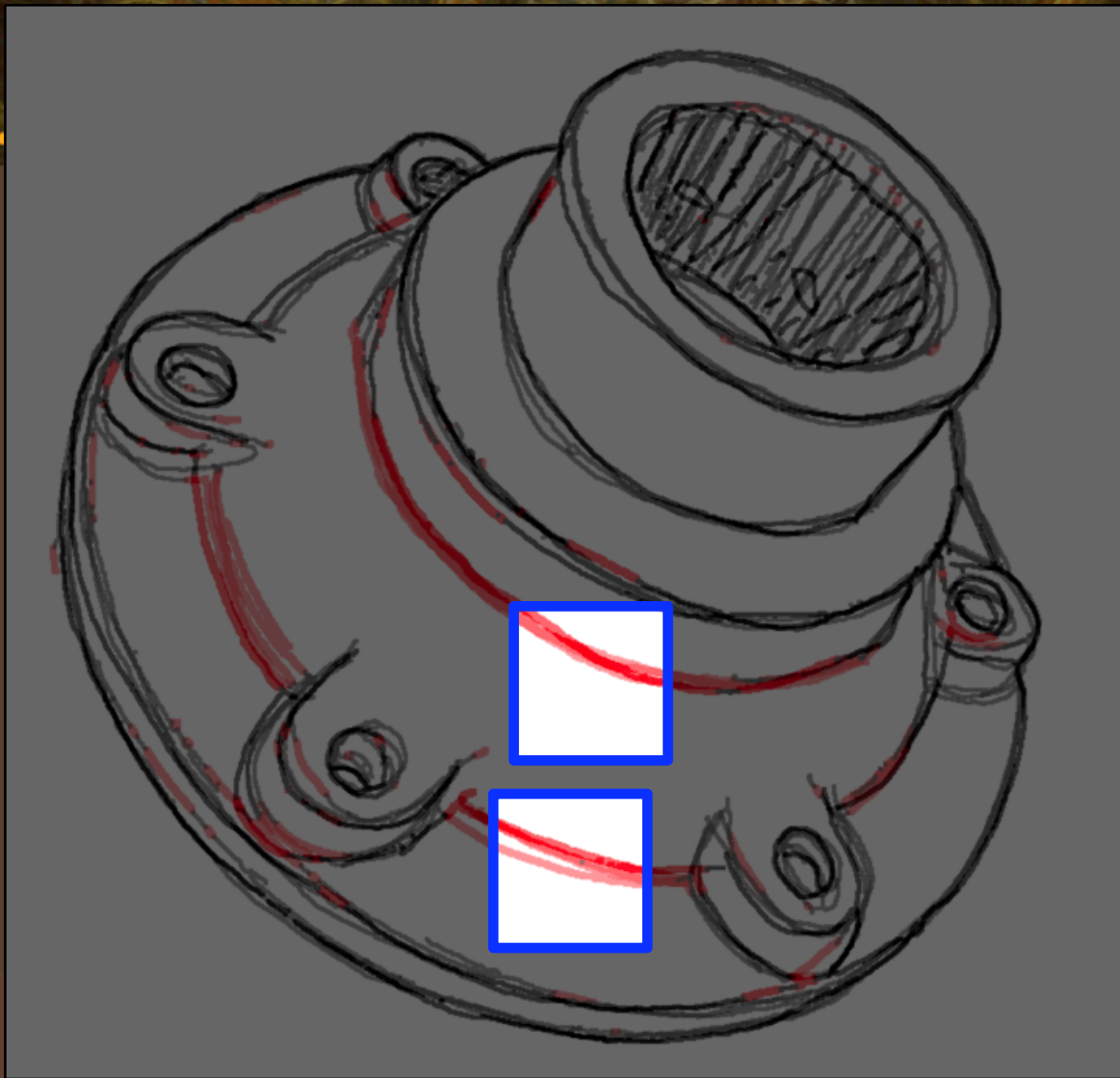
Maximum Curvature



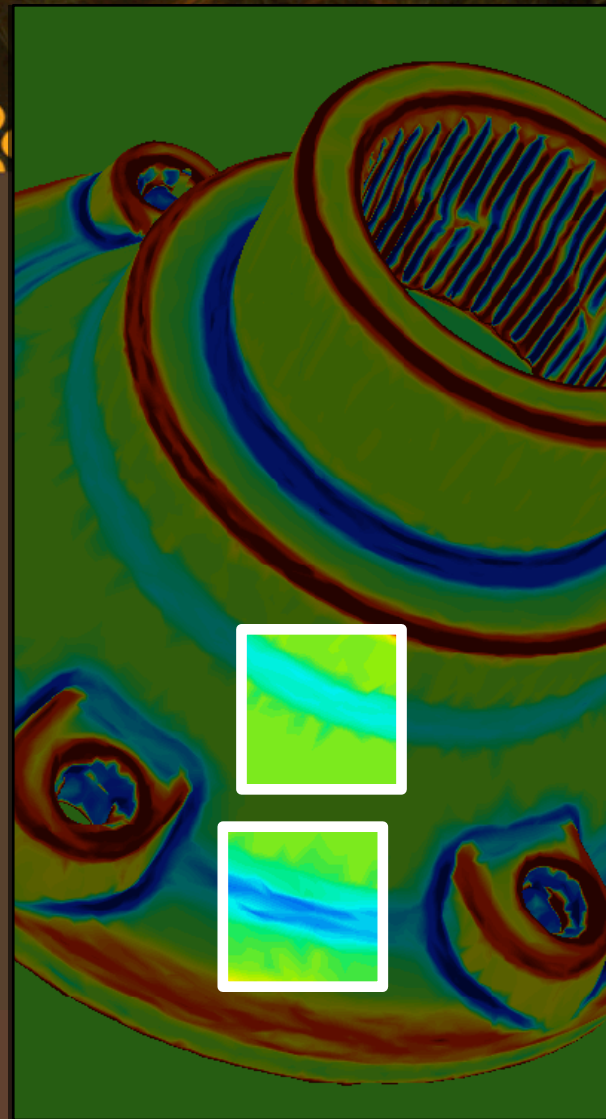
Composite Drawing



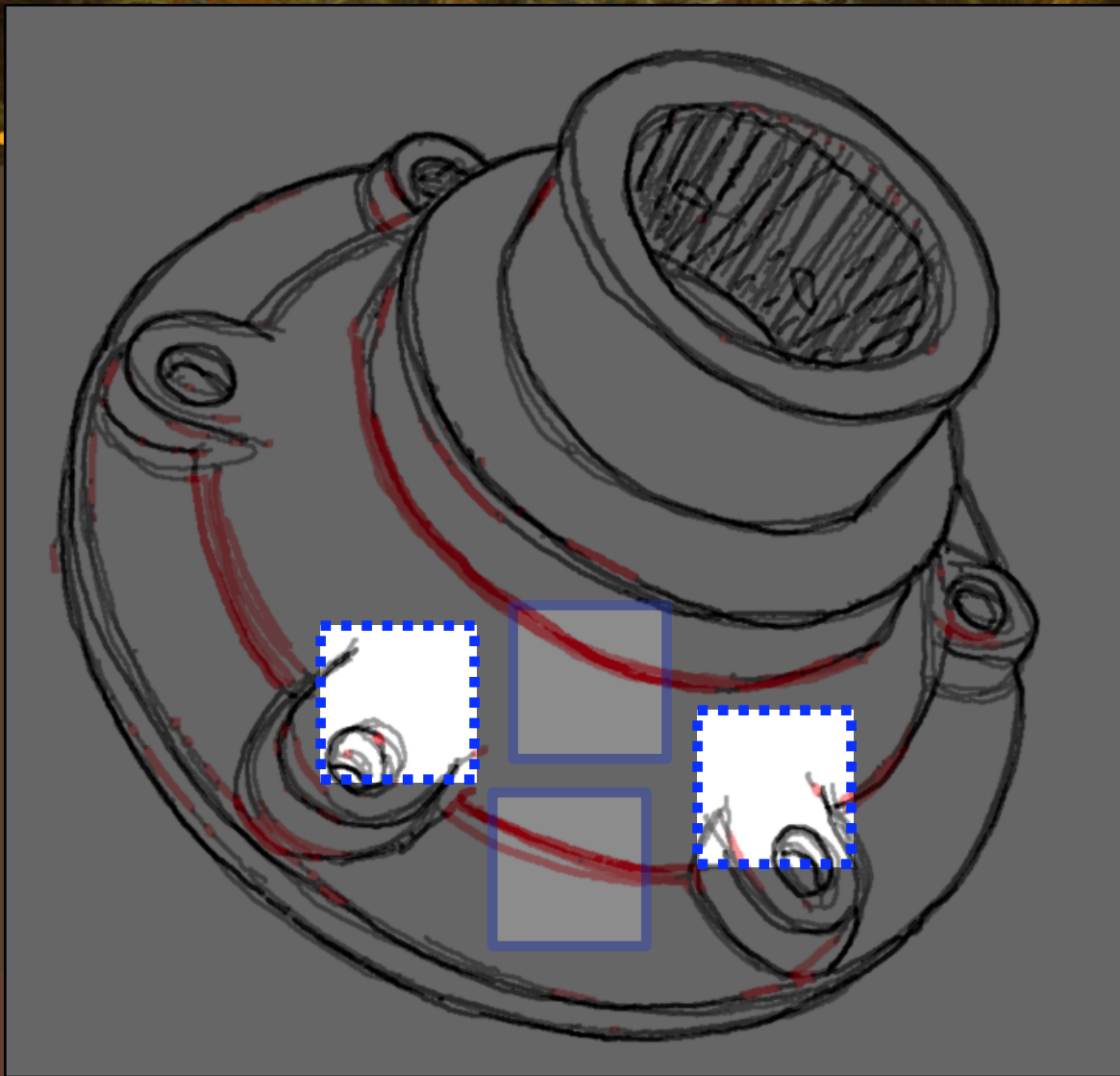
Maximum Curvature



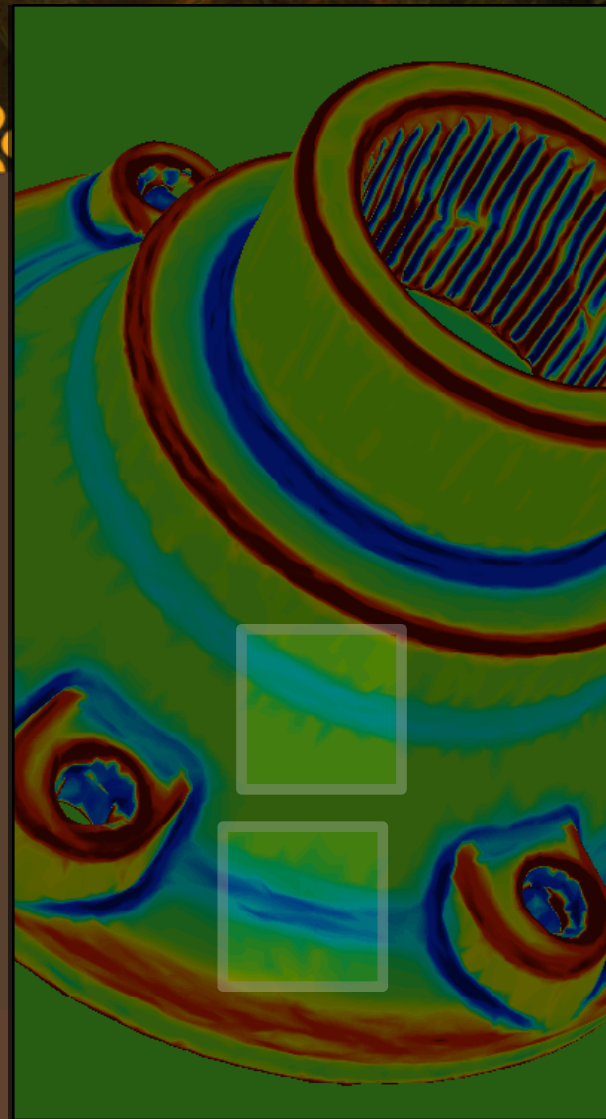
Composite Drawing



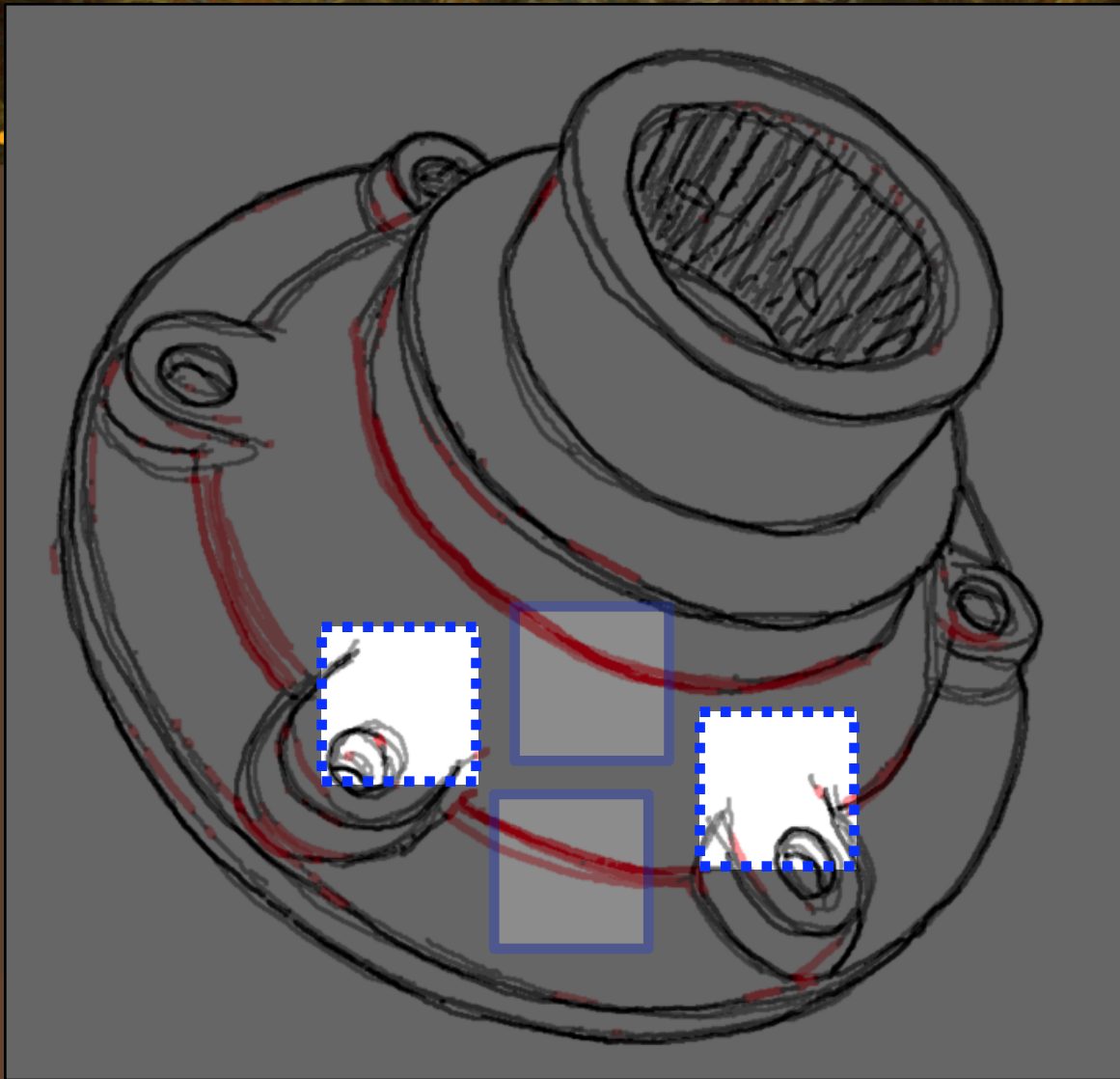
Maximum Curvature



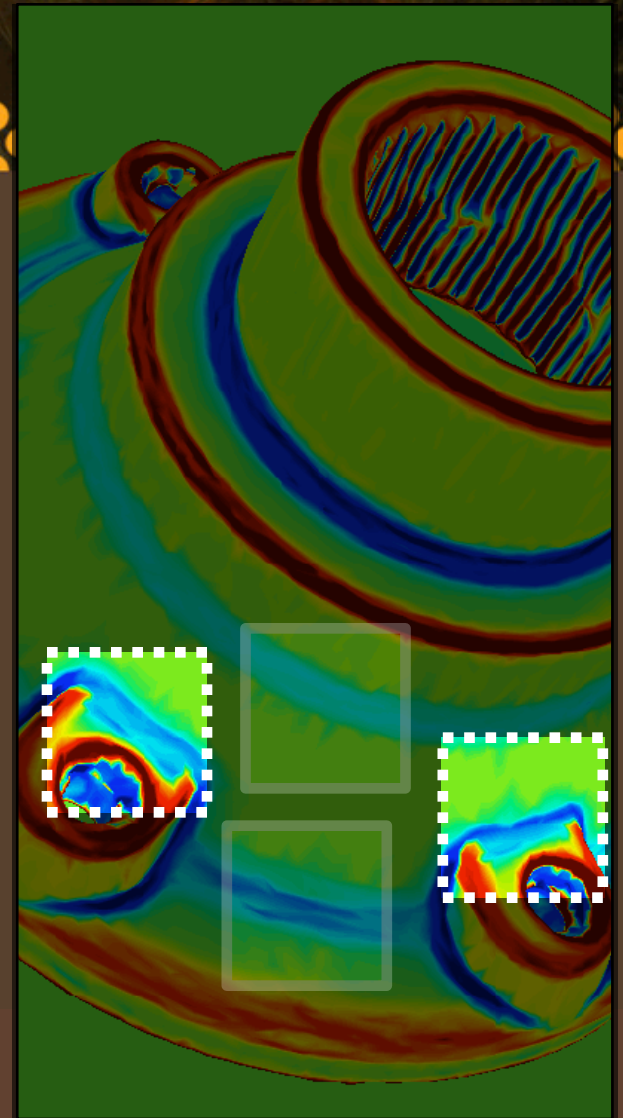
Composite Drawing



Maximum Curvature



Composite Drawing



Maximum Curvature

Future Work

- New studies
 - Shading and stylization effects
 - Perception of shape in artists' drawings
- Data-driven line drawing synthesis



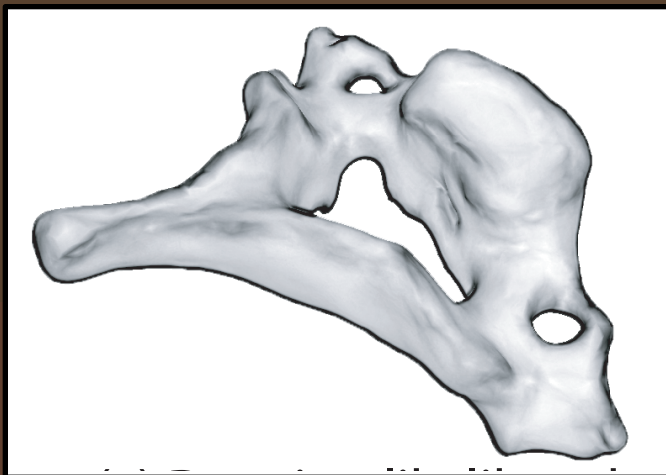
Synthesis Future Work



Artists' Composite



Individual Drawing



Probability Image



Synthesized Lines

Dataset Plug

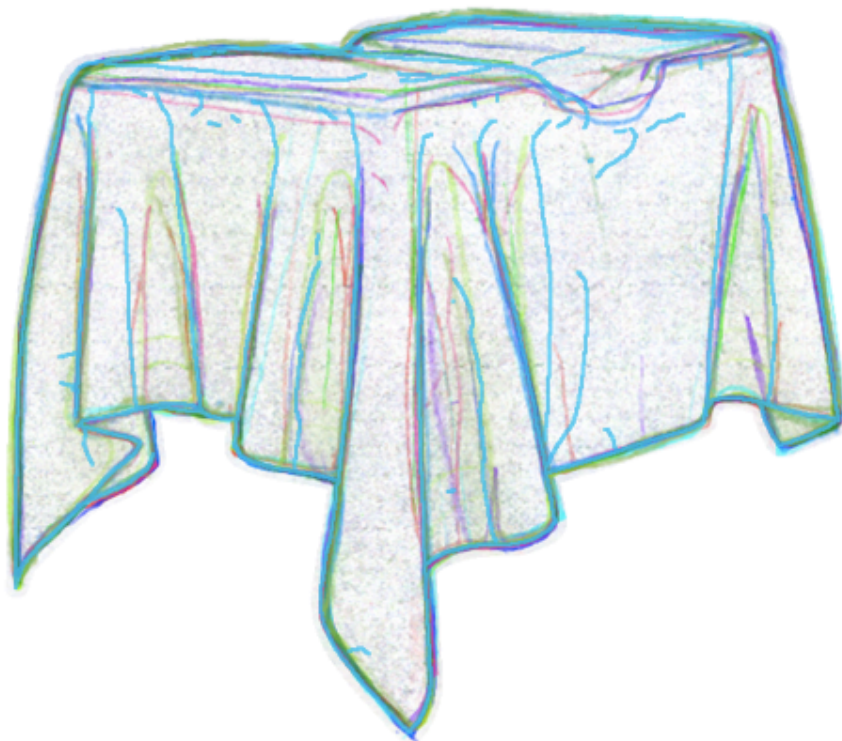
- You can download the full dataset at:

www.cs.princeton.edu/gfx/proj

- Viewer demo



Viewer Demo



Filter Drawings

Model: twoboxcloth
View: a Light: any
Date: any Subject: any
Precise: Sloppy:
< Prev Model/View Next Model/View >

Drawing Style

Binary Colored
Distance Threshold 2px
Background White

Overlay CG Lines

Occluding Contours
Suggestive Contours 10
Apparent Ridges 10
Ridges and Valleys 10
Canny Edges 10
Distance Threshold 2px

Selected Drawings

	Subject	Model	View	Light
<input checked="" type="checkbox"/>	1	twoboxcloth	a	2
<input checked="" type="checkbox"/>	2	twoboxcloth	a	2
<input checked="" type="checkbox"/>	3	twoboxcloth	a	2

Acknowledgements

- Big thanks to the artists from Art Collaborations and Princeton University
- Thanks to Doug DeCarlo, Maneesh Agrawala, Frédo Durand, Eitan Grinspun, and the PGG
- Support from NSF and Google
 - CNS-0406415, IIS-0612231, CCF-0702672, CCF-0702672, IIS-0511965, and CCF-0347427
- Models courtesy of Aim@Shape, VAKHUM, and Cyberware

